



SUBMITTAL SHEET

www.anemostat-hvac.com

FOR SECURITY GRILLES,
REGISTERS, AND DIFFUSERS

PRODUCT FEATURES

- Angles / Frames used to secure air inlets and outlets to building structure
- Available as a welded frame or loose angle pieces
- Field or factory attached / welded in place
- Frame Inside Dimensions = Order Size / Nominal Duct Size

CONSTRUCTION DETAILS

- Hot Rolled Steel Aluminum
- 304 Stainless Steel

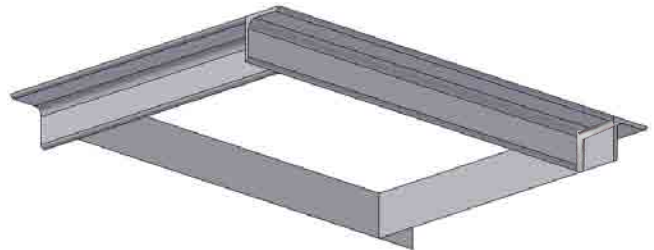
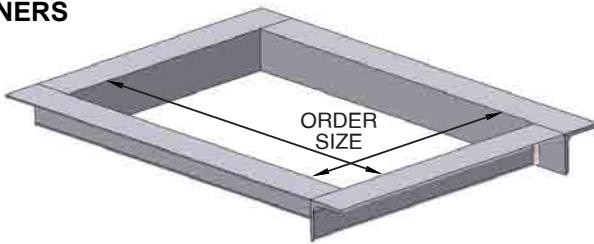
- Arctic White Mill Finish White Epoxy
- Grey Primer Rust Inhibiting Prime Coat

- 1"x1"x 1/8" 1"x1"x 3/16" 2"x2"x 3/16"
- 1.5"x1.5"x 3/16" 2"x2"x 1/4" 3"x3"x 1/4"

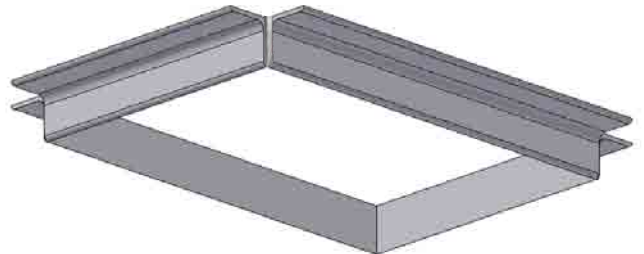
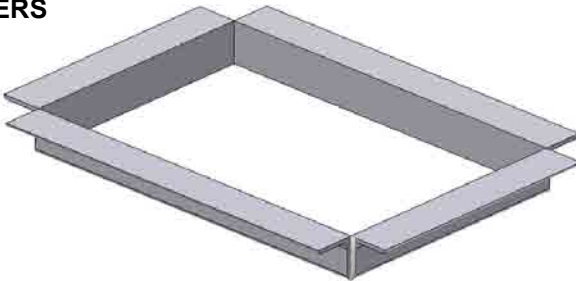
TYPE

- OC Open Corners
- CC Closed Corners
- MC Mitered Corners
- Loose Loose Pieces (2 or 4)

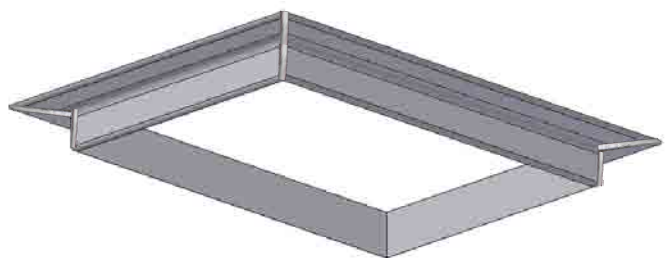
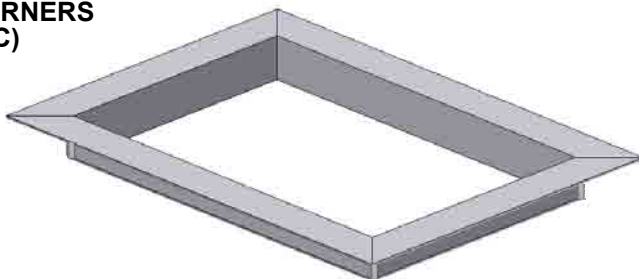
CLOSED CORNERS (CC)



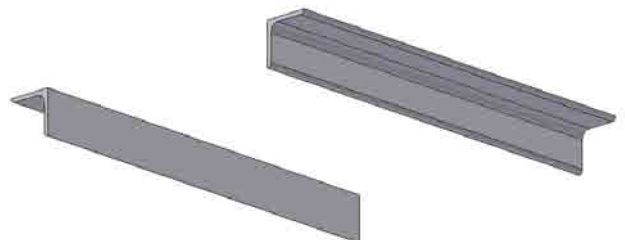
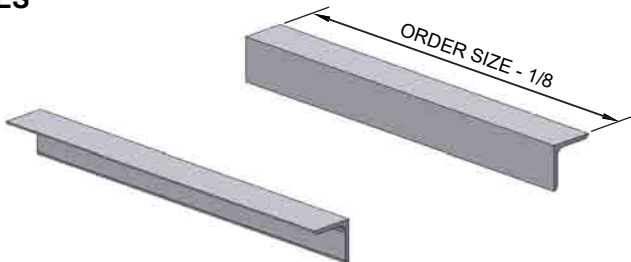
OPEN CORNERS (OC)



MITERED CORNERS (MC)



LOOSE PIECES



NOTE: FOR (2) LOOSE PIECES OF ANGLE, LENGTH BASED ON LONGEST SIDE OF GRILLE.

All dimensions are in inches.

JOB NAME:

SUBMITTED BY: