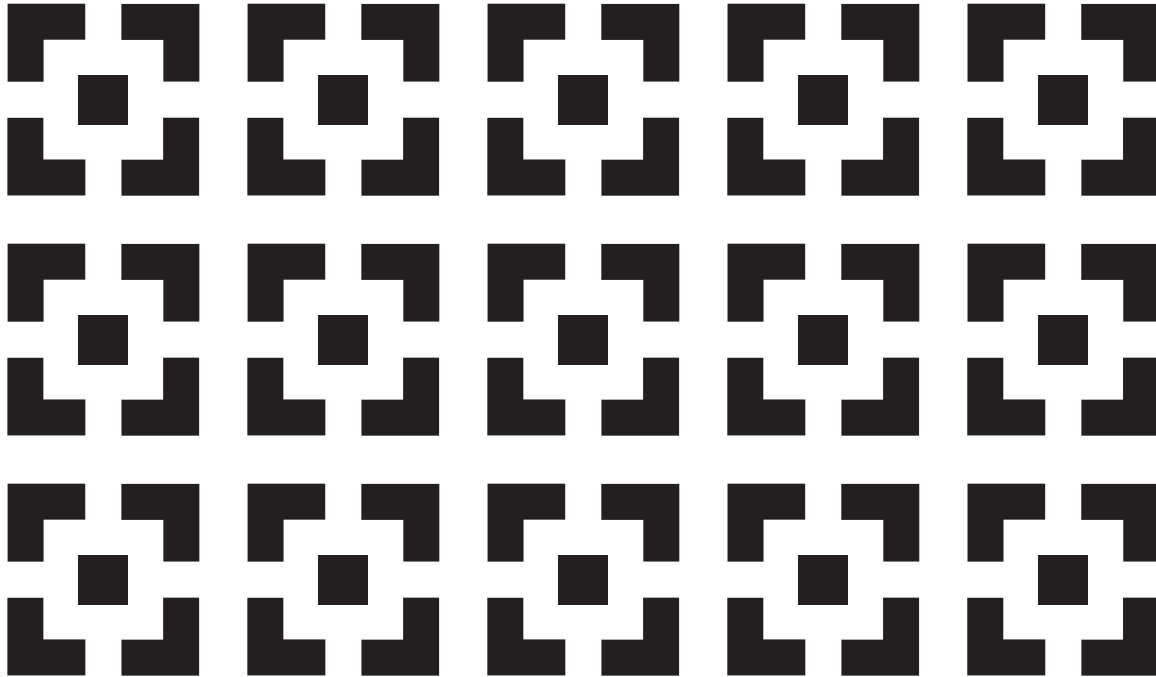


38% Free Area



# Holes / Pattern Repeats	W	H	# Holes / Pattern Repeats	W	H	# Holes / Pattern Repeats	W	H
1	1.000	1.000	11	13.500	13.500	21	26.000	26.000
2	2.250	2.250	12	14.750	14.750	22	27.250	27.250
3	3.500	3.500	13	16.000	16.000	23	28.500	28.500
4	4.750	4.750	14	17.250	17.250	24	29.750	29.750
5	6.000	6.000	15	18.500	18.500	25	31.000	31.000
6	7.250	7.250	16	19.750	19.750	26	32.250	32.250
7	8.500	8.500	17	21.000	21.000	27	33.500	33.500
8	9.750	9.750	18	22.250	22.250	28	34.750	34.750
9	11.000	11.000	19	23.500	23.500	29	36.000	36.000
10	12.250	12.250	20	24.750	24.750			

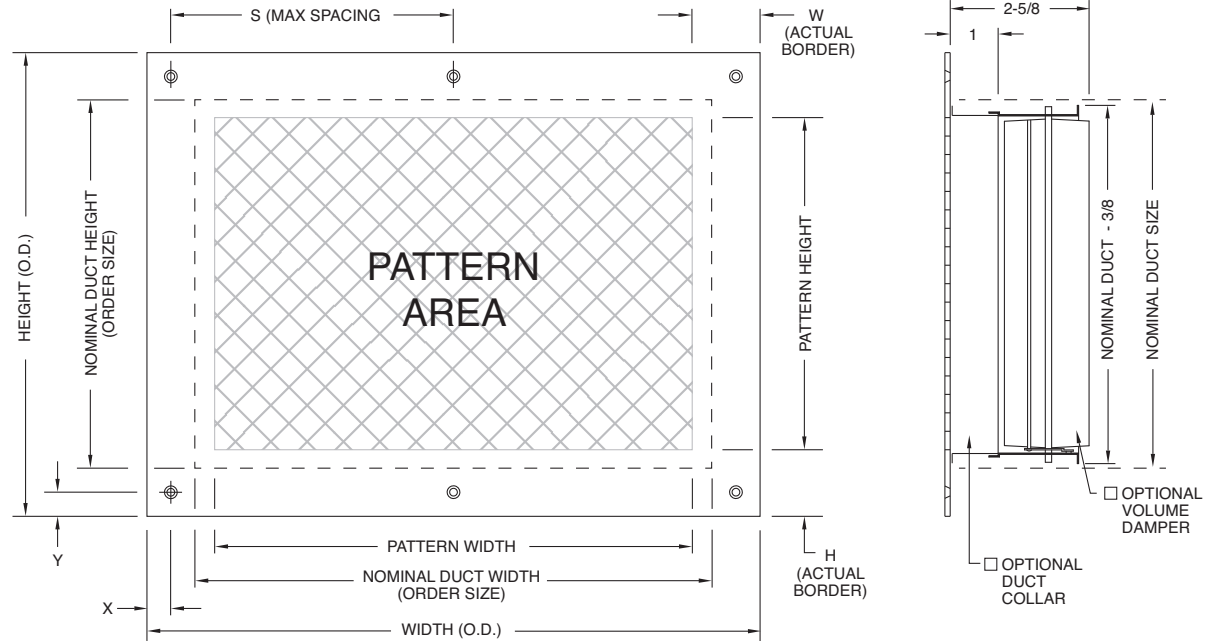
All dimensions are in inches.

JOB NAME:

SUBMITTED BY:

PRODUCT FEATURES

- Decorative stamped grille for use with HVAC supply, return, and transfer applications.
- Many patterns available to enhance appearance of the space.
- Fabricated to exacting specifications for pattern, size, material, gauge, finish, and installation.
- See "How To Specify / Order" for available materials, finishes and options.



Qty	Order Size (Nom Duct Size)		Face Overall Size (O.D.)		Pattern #	Pattern Size		# of Patterns / Holes	Screw Holes / Location / Size / Qty					Actual Border		Material		Finish	Volume Control Damper	
	W	H	W	H		W	H		X	Y	S	Size	# Holes	W	H	Type	Thickness			

- Notes: Grilles can be fabricated to most any specification. Here are "typical" specifications:
- Face Overall Size = Order Size + 2-1/2"
 - Screw Hole Size: #8
 - Actual Border calculated based on Order Size, Face Overall Size, and Pattern selected
 - Opposed-blade volume damper can be tack welded directly to face. Some minor blemishes may be visible. Damper operator may be difficult to access (behind a fret).

All dimensions are in inches.

SUBMITTAL SHEET

SAG / 12.00 / 12.00 / P11 / 14 / 2.50 / ST / WH / N1

Model _____
SAG - Stamped Architectural Grille

Nominal Duct Width _____
06.00" to 36.00"

Nominal Duct Height _____
06.00" to 36.00"

Pattern Number _____
(see submittal library for available patterns)

Face Gauge _____

- 7 - (3/16")
- 8 - (8 GA)
- 10 - (10 GA)
- 12 - (12 GA)
- 14 - (14 GA)
- 16 - (16 GA)
- 18 - (18 GA)
- 20 - (20 GA)

Overall Face Size _____

- 2.00** - Order size plus 2"
(Approx. 1" Border)
- 2.50** - Order size plus 2-1/2"
(Approx. 1-1/2" Border)
- 3.50** - Order size plus 3-1/2"
(Approx. 2" Border)

Material _____

- ST** - Steel
- 04** - 304 Stainless Steel
- 16** - 316 Stainless Steel
- AL** - Aluminum
- GZ** - Steel, Galvanized (G90)
- 280** - Muntz Metal
- 220** - Commercial Bronze

Options

- C6** - 1" Collar (20 GA thick)
- N1** - No Screw Holes
- 99** - Special Construction
(Provide Details)

Finish

- WH** - Arctic White
- 4P** - Satin Polish
- ML** - Mill Finish
- WE** - White Epoxy
- SV** - Silver
- LB** - Light Bronze
- MB** - Medium Bronze
- CB** - California Bronze
- FB** - Flat Black
- GB** - Gloss Black
- BG** - Beige
- GP** - Grey Primer
- RP** - Rust Inhibiting Prime Coat
- C1** - Custom Color Match #1
Baked Enamel
- C2** - Custom Color Match #2
Baked Enamel
- C3** - Custom Color Match #3
Baked Enamel

Custom Finishing Available

NOTE: Pattern / Material Type / Material Gauge determine availability.
Contact your Anemostat Representative with specific requirements

All dimensions are in inches.