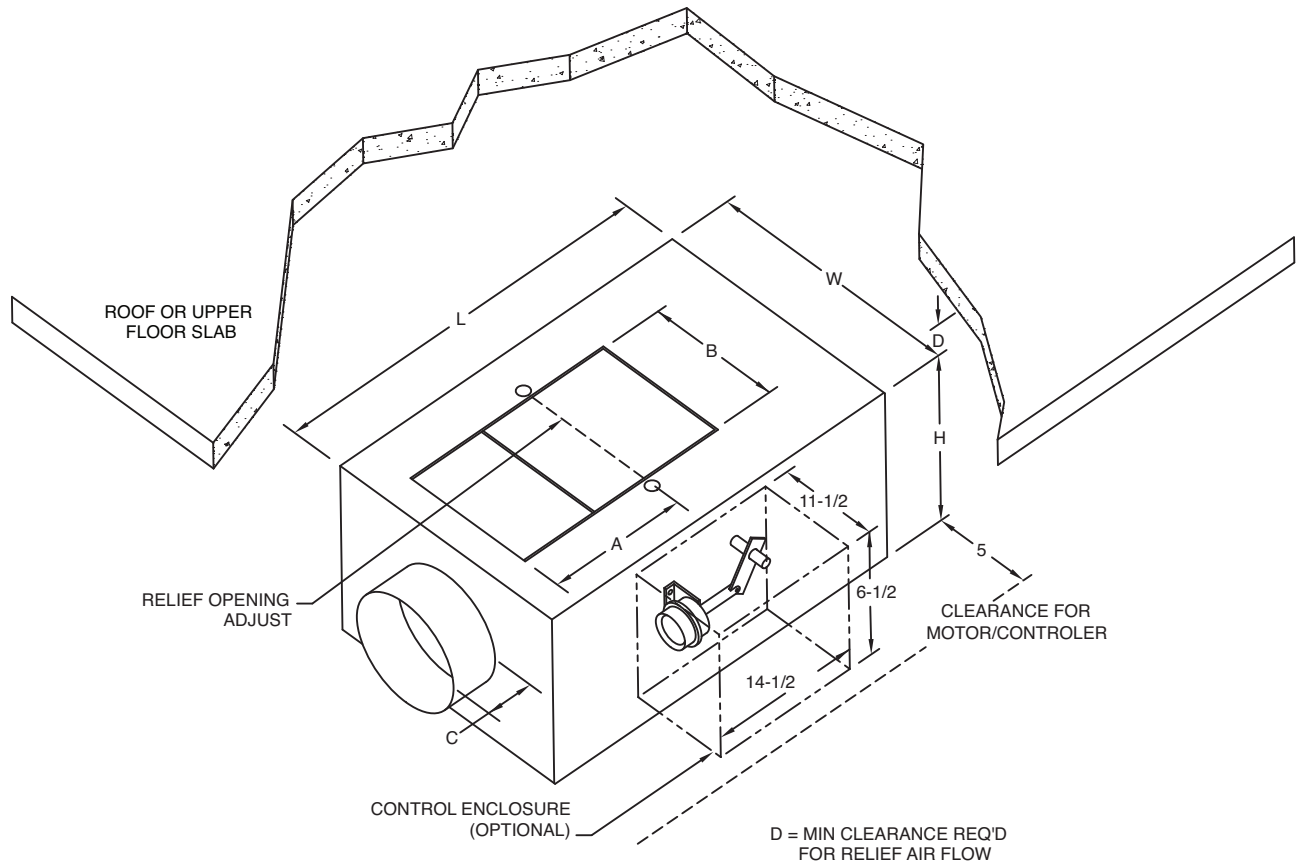


PRODUCT FEATURES

- Corrosion Resistant Coated Steel Casing
- No Access Doors Required
- Acoustical Thermal Glass Fibre Insulation Coated to Prevent Erosion. Meets Requirements of NFPA Bulletin 90A & UL181.
- Slip & Drive Type Connection for Maximum Installation Adaptability.
- Easily Adjustable Relief Port Damper.
- Nylon Bearings on Moving Parts.



Box Size	CFM Range	Inlet	A	B	C	D	L	W	H	Plenum Height (D+H)
5A	80-160	Ø5	9-1/2	7-1/2	4	4	24	10	9-1/2	13-1/2
6A	120-300	Ø6	9-1/2	7-1/2	4	4	24	10	9-1/2	13-1/2
7A	180-420	Ø7	9-1/2	7-1/2	4	4	24	10	9-1/2	13-1/2
8A	240-500	Ø8	9-1/2	7-1/2	4	4-1/2	24	10	9-1/2	14
8B	400-640	Ø8	9-7/16	10-1/4	4	4-1/2	24	13	9-1/2	14
10C	600-900	Ø10	9-7/16	10-1/4	4	4	27	20	11-1/2	15-1/2
12D	800-1400	Ø12	9-7/16	10-1/4	4	4	27	20	13-1/2	17-1/2
14E	1200-1800	12x12	9-11/16	14	4	5	30	24	13-1/2	18-1/2
16E	1600-2400	16x12	9-11/16	14	4	6	30	24	13-1/2	19-1/2
18F	2100-3150	18x12	9-11/16	14	4	6	30	24	13-1/2	19-1/2

All dimensions are in inches.

JOB NAME:

SUBMITTED BY: