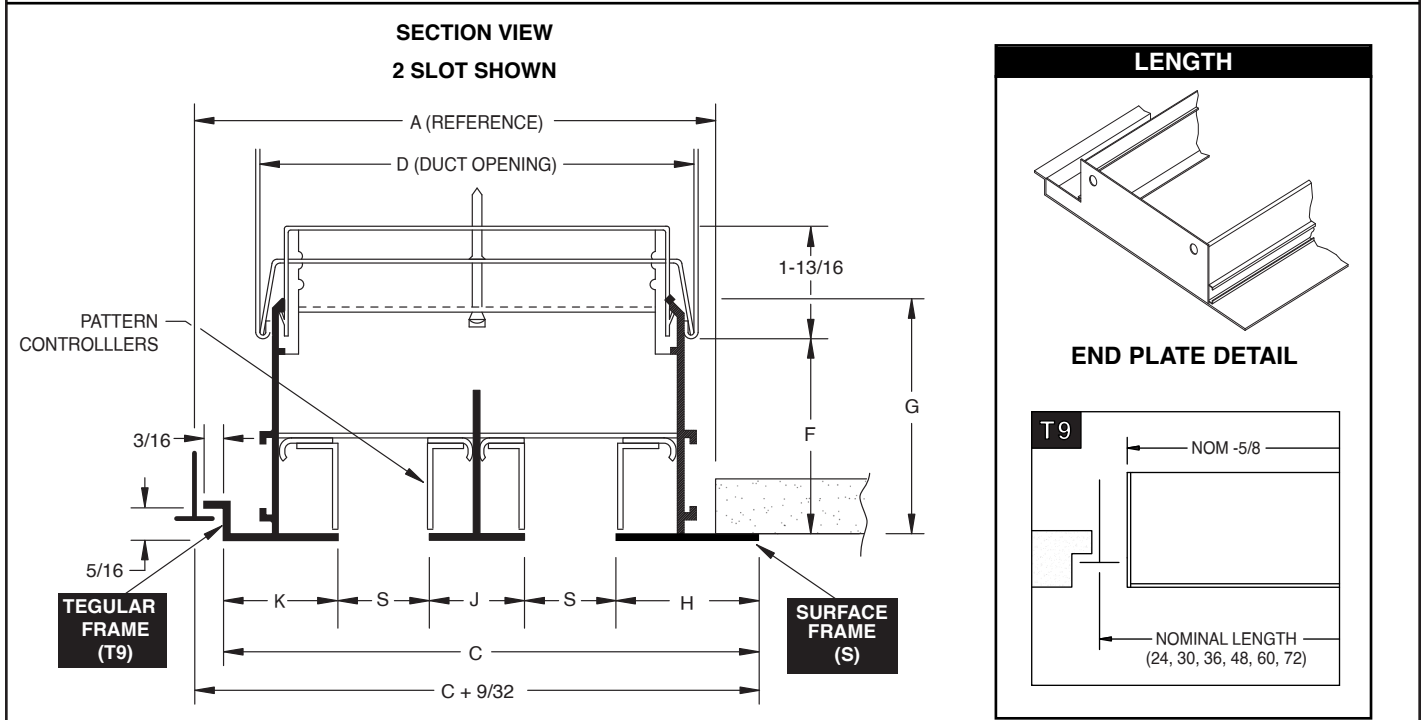


SUBMITTAL SHEET

www.anemostat-hvac.com

PRODUCT FEATURES	CONSTRUCTION DETAILS	MODELS
<ul style="list-style-type: none"> Designed for use with combination 9/16" Tegular / Surface Frame applications Standard lengths = 24", 30", 36", 48", 60", 72" (custom lengths available) Includes plenum mounting brackets and screws See Model AD Air Distribution plenums engineered for use with this diffuser 	<ul style="list-style-type: none"> Extruded aluminum, adjustable linear slot diffuser Finish: <ul style="list-style-type: none"> <input type="checkbox"/> Arctic White Outer Frames and Center Tees Black Volume / Pattern Controllers <input type="checkbox"/> Optional Anemostat Color _____ <input type="checkbox"/> Custom Color Match _____ 	<p>Supply Diffusers</p> <ul style="list-style-type: none"> <input type="checkbox"/> PJ-T9S-200 2" Slot <input type="checkbox"/> PJ-T9S-250 2-1/2" Slot <input type="checkbox"/> PJ-T9S-300 3" Slot <p>Returns (No Volume / Pattern Controllers)</p> <ul style="list-style-type: none"> <input type="checkbox"/> FFR-T9S-200 2" Slot <input type="checkbox"/> FFR-T9S-250 2-1/2" Slot <input type="checkbox"/> FFR-T9S-300 3" Slot



All dimensions are in inches.

PJ-T9S-200 • 2" SLOT WIDTH									
# SLOTS	S	A	C	D	J	F	G	K	H
1	2	5-21/32	5-15/16	4-5/16	-	1-25/32 to 2-5/32	2-5/8	2-3/16	1-3/4
2	2	9-21/32	9-15/16	8-5/16	2				
PJ-T9S-250 • 2-1/2" SLOT WIDTH									
# SLOTS	S	A	C	D	J	F	G	K	H
1	2-1/2	6-13/32	6-11/16	5-5/16	-	2-1/4 to 2-5/8	3-3/32	2-3/16	2
2	2-1/2	11-13/32	11-11/16	10-5/16	2-1/2				
PJ-T9S-300 • 3" SLOT WIDTH									
# SLOTS	S	A	C	D	J	F	G	K	H
1	3	7-5/32	7-3/16	6-5/16	-	2-3/8 to 2-3/4	3-7/32	2-3/16	2
2	3	13-5/32	13-3/16	12-5/16	3				

JOB NAME: _____ **SUBMITTED BY:** _____