

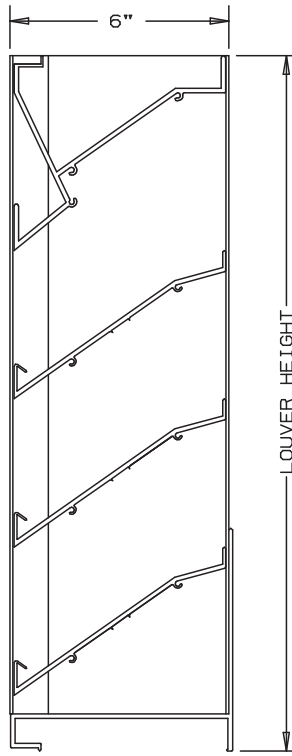


Anemostat®
AIR DISTRIBUTION

MODEL **SL64**

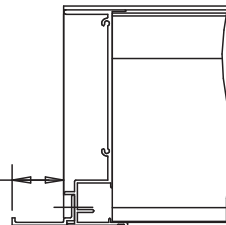
EXTRUDED ALUMINUM LOUVERS
6" DEEP

DRAIN BLADE-STATIONARY-CHANNEL TYPE
WITHSTANDS DESIGN PRESSURE UP TO ±180 PSF

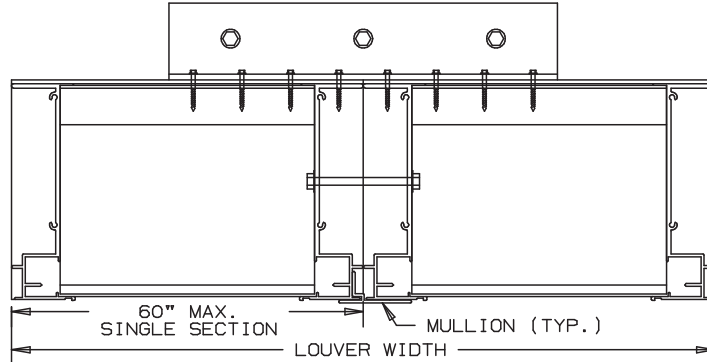


NOT TO SCALE

1 1/2"



OPTIONAL FLANGE
FRAME SHOWN



SPECIFICATIONS

FRAME: EXTRUDED ALUMINUM CHANNEL FRAME .125" THK., OF 6063-T6 ALLOY OF WELDED CONSTRUCTION.
BLADE: EXTRUDED ALUMINUM .081" THK. OF 6063-T5 ALLOY MECHANICAL FASTENING CONSTRUCTION.
FACE OF LOUVER: FULL WIDTH SILL WITH HEAD AND BLADES CONTAINED WITHIN JAMBS. APPROXIMATE BLADE CENTERS 4".
SCREEN: (WHEN INDICATED, IN A REMOVABLE FRAME)
BIRD SCREEN - 1/2" FLATTENED ALUMINUM, .051" THK.
OR - 1/2" SQ. MESH INTERMEDIATE DOUBLE-CRIMPED ALUMINUM WIRE, .063" DIA.
OR - 18/16 MESH, .011" DIA. ALUMINUM WIRE INSECT SCREEN.

FINISH: _____

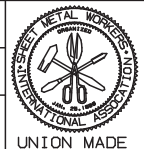
MINIMUM PANEL SIZE: 12" x 12"
MAXIMUM PANEL SIZE: 96" x 96"

LOUVER PERFORMANCE STATEMENT

PASSED MIAMI-DADE COUNTY FLORIDA TEST PROTOCOLS TAS (PA) 201, TAS (PA) 202, AND TAS (PA) 203
PANELS OVER 48" WIDE WILL HAVE A 2"x2"x1/4" VERTICAL INTERIOR BLADE SUPPORT ANGLE AT APPROXIMATE CENTER OF PANELS.
THE ANEMOSTAT MODEL SL64 SHALL BE FABRICATED TO PROVIDE A MINIMUM OF (58%), 9.24 SQUARE FEET OF FREE AREA FOR A 48"x48" SIZE LOUVER, AND BEAR THE AMCA CERTIFIED RATING PROGRAM SEAL FOR AIR PERFORMANCE AND WATER PENETRATION. THE RATING SHALL SHOW A BEGINNING POINT OF WATER PENETRATION AT .01 OUNCES PER SQUARE FOOT OF FREE AREA TO BE ABOVE 1250 FEET PER MINUTE (11,550) CUBIC FEET PER MINUTE WITH .10 INCHES WATER GAUGE PRESSURE DROP AT 850 FPM FOR AIR INTAKE.

NOMINAL DEDUCTIONS WILL BE MADE TO THE OPENING SIZE GIVEN.

ITEM	QTY.	WIDTH	HEIGHT	WIDTH	HEIGHT	MULL	TYPE	LOC	SCREENS	UNION MADE
		OPENING SIZE		LOUVER SIZE						



Anemostat Air Distribution
1220 E. Watson Center Road
Carson, CA 90745
310-835-7500 • air@anemostat.com
www.anemostat-hvac.com

AGENT: _____

ARCH./ENG.:
CONTR.:
PROJECT:
EDR: ECN: JOB:
DATE: DWN.: DWG.:

MODEL SL64 DRAIN BLADE

EXTRUDED ALUMINUM - STATIONARY

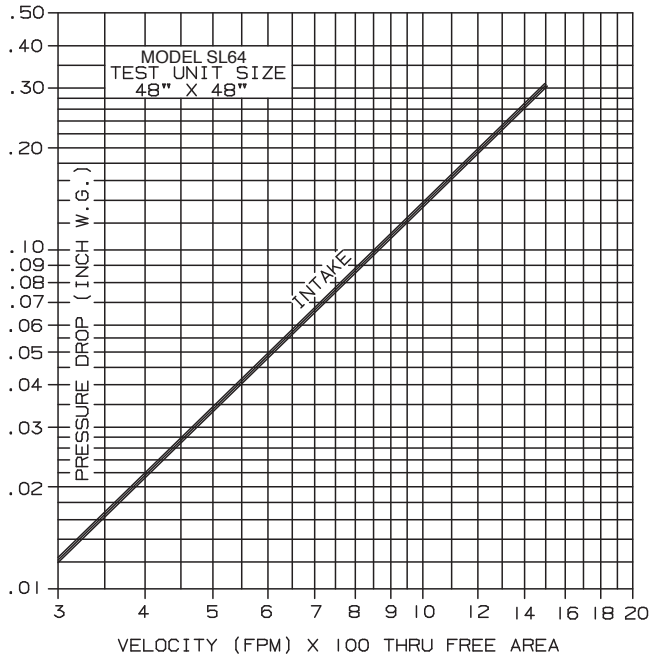
PERFORMANCE DATA

EXCELLENT WEATHER PROTECTION WITH LITTLE PRESSURE LOSS.

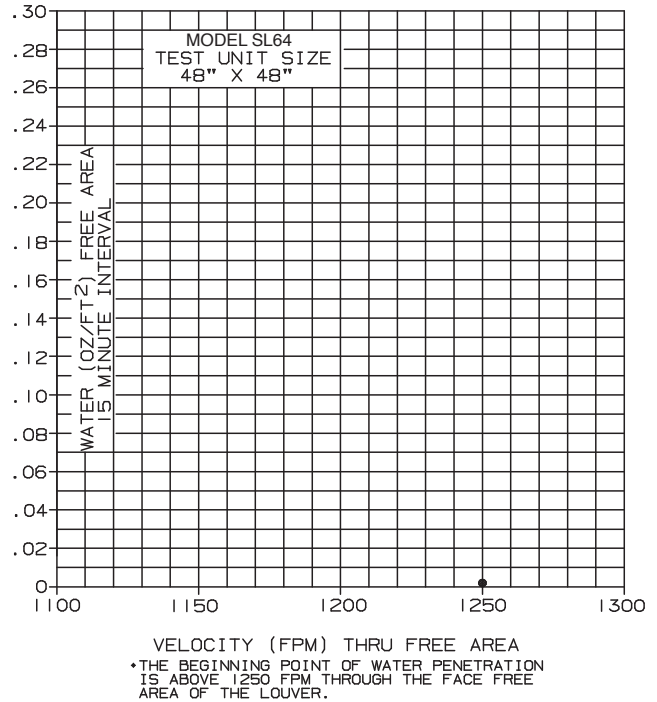
TESTS OF A 48" X 48" SAMPLE ACCORDING TO AMCA STANDARD 500-L SHOWS LOW WATER PENETRATION. TESTS SHOW THE BEGINNING POINT OF WATER PENETRATION IS ABOVE 1250 FPM THROUGH THE FREE AREA OF THE LOUVER, WITH LESS THAN .14" W.G. PRESSURE DROP AT 1000 FPM (INTAKE).

RATINGS DO NOT INCLUDE THE EFFECT OF BIRDSCREEN.

PRESSURE DROP



WATER PENETRATION



*AMCA STANDARD 500 LIMITS TESTING OF WATER PENETRATION TO EITHER A MAXIMUM VELOCITY OF 1250 FPM OR 2.5 OUNCES OF WATER PER SQUARE FOOT OF LOUVER FREE AREA.

FREE AREA

HEIGHT	FREE AREA (SQ. FT.)							
	WIDTH							
	12"	24"	36"	48"	60"	72"	84"	96"
12"	.18	.43	.69	.94	1.16	1.42	1.67	1.93
24"	.69	1.70	2.70	3.71	4.59	5.59	6.60	7.60
36"	1.21	2.96	4.72	6.47	8.01	9.76	11.52	13.27
48"	1.72	4.23	6.73	9.24	11.43	13.93	16.44	18.94
60"	2.24	5.49	8.75	12.00	14.85	18.11	21.36	24.62
72"	2.75	6.76	10.72	14.77	18.27	22.28	26.28	30.29
84"	3.27	8.02	12.78	17.53	21.69	26.45	31.20	35.96
96"	3.78	9.29	14.79	20.30	25.12	30.62	36.13	41.63



Anemostat certifies that the performance data shown has been determined by test in accordance with applicable AMCA standards.

SLEEVE OR SLEEVE AND DAMPER HURRICANE LOUVER

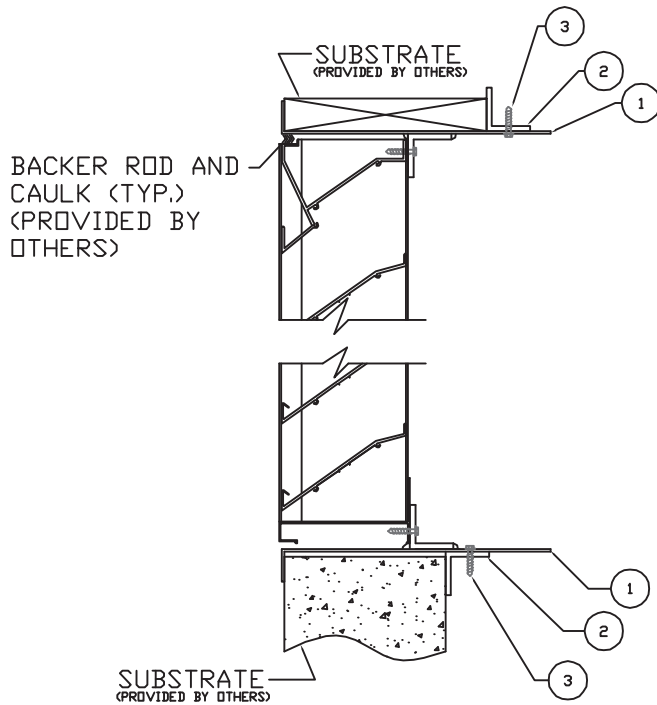
THIS DAMPER/LOUVER COMBINATION PROVIDES A WATER RESISTANT SYSTEM. THE SL64 REQUIRES THE DA20 DAMPER INSTALLED WITH THE LOUVER PANEL TO MAKE IT A WATER RESISTANT SYSTEM.

PANEL SIZE

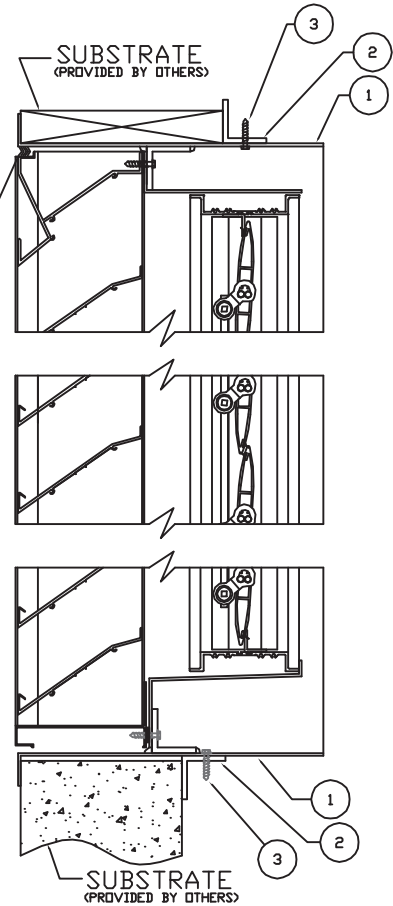
MODEL	MAX. SINGLE PANEL
SL64	48"W x 96"H
DA20	48"W x 96"H

NOTES:

1. NUMBER OF DAMPERS BEHIND A LOUVER PANEL IS UNLIMITED.
2. DAMPER MULLIONS/SEAMS DO NOT HAVE TO ALIGN WITH LOUVER PANEL SEAMS.
3. ARCHITECTURAL LOUVERS ALSO APPLY.



BACKER ROD AND
CAULK (TYP.)
(PROVIDED BY
OTHERS)



ALL FASTENERS MUST BE A307 PLATED STEEL OR 304 STAINLESS STEEL

B	#14 x 1 1/4" TEK SCREW
C	#10 x 2" WOOD SCREW
D	#10 x 2" LONG SHEET METAL SCREW
E	1/4" x 1 3/4" LONG TAPCON SCREW
F	1/2" x 1 3/4" BOLT
G	2" x 2" 6063-T5 EXTRUDED ALUMINUM ANGLE
H	2" x 4" 6063-T5 EXTRUDED ALUMINUM ANGLE
I	.125" ALUMINUM SLEEVE

	WOOD	CONCRETE	STEEL
1	I	I	I
2	G/H	G/H	G/H
3	D	D	D

Anemostat Air Distribution
1220 E. Watson Center Road
Carson, CA 90745
310-835-7500 • air@anemostat.com
www.anemostat-hvac.com

AGENT: _____

ARCH./ENG.:

CONTR.:

PROJECT:

EDR: ECN: JOB:

DATE: DWN: DWG.:

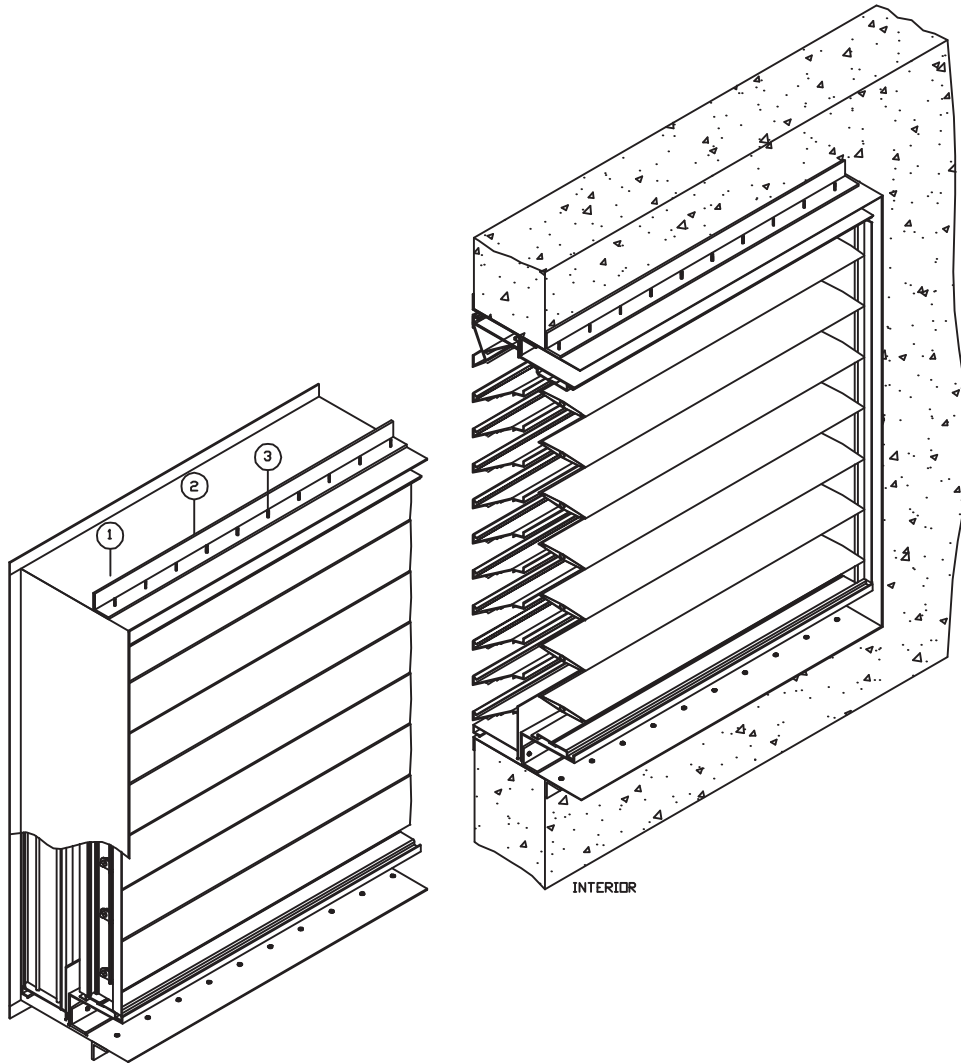


Anemostat®

AIR DISTRIBUTION

MODEL **SL64**

SLEEVE OR SLEEVE AND DAMPER
HURRICANE LOUVER



SUBSTRATE REMOVED FOR CLARITY

INTERIOR

	WOOD	CONCRETE	STEEL
1	I	I	I
2	G	G	G
3	D	D	D

ALL FASTENERS MUST BE A307 PLATED STEEL OR 304 STAINLESS STEEL	
D	#10 x 2" LONG SHEET METAL SCREW
G	2" x 2" 6063-T5 EXTRUDED ALUMINUM ANGLE
I	.125" ALUMINUM SLEEVE

Anemostat Air Distribution
 1220 E. Watson Center Road
 Carson, CA 90745
 310-835-7500 • air@anemostat.com
 www.anemostat-hvac.com