

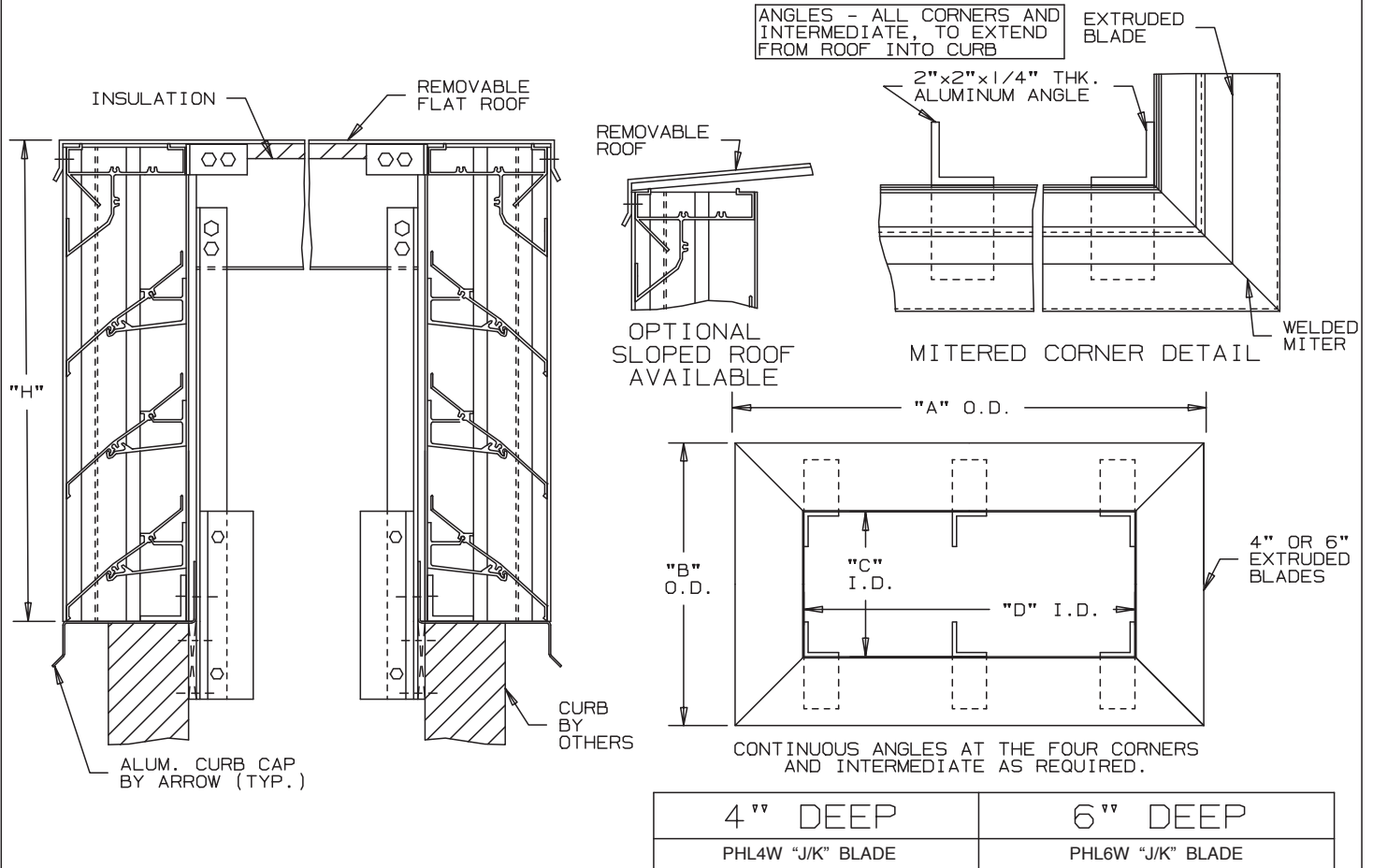


Anemostat®
AIR DISTRIBUTION

MODEL **PHL4W / PHL6W**

LOUVERED PENTHOUSES EXTRUDED ALUMINUM
4" AND 6" DEEP BLADES

INTERIOR FASTENING INSTALLATION
MITERED CORNER - "J/K" BLADE - STATIONARY



SPECIFICATIONS

MATERIAL: EXTRUDED ALUMINUM SECTIONS OF () .081", () .125" THICKNESS OF 6063-T52/T6 ALLOY. WITH REINFORCING RIB BOSSES.
 ROOF: REMOVABLE ROOF .060" THK. SHEET ALUMINUM REINFORCED WITH ALUMINUM BRACING WHERE REQUIRED TO TAKE A SNOW LOAD OF 40 LBS./SQ.FT. PLUS A REQUIRED SAFETY FACTOR.
 INSULATION: UNDERSIDE OF ROOF IS LINED WITH 1/2" THK. INSULATION.
 SCREENS: (WHEN INDICATED)
 BIRD SCREEN - 1/2" SQUARE MESH, 19 GA. GALVANIZED STEEL, ON INTERIOR.
 NOTE: PENTHOUSE DIMENSIONS "A" OR "B" EXCEEDING 84" SHALL BE SHIPPED IN SECTIONS FOR FIELD ASSEMBLY BY OTHERS.

ITEM	QTY.	"A"	"B"	"C"	"D"	"H"	MULL	SCREENS	
								TYPE	LOC



Anemostat Air Distribution
 1220 E. Watson Center Road
 Carson, CA 90745
 310-835-7500 • air@anemostat.com
 www.anemostat-hvac.com

AGENT: _____

ARCH./ENG. : _____
 CONTR. : _____
 PROJECT : _____
 EDR: _____ ECN: _____ JOB: _____
 DATE: _____ DWN. : _____ DWG. : _____

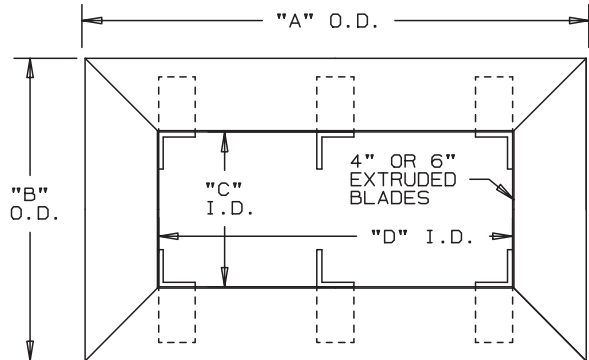
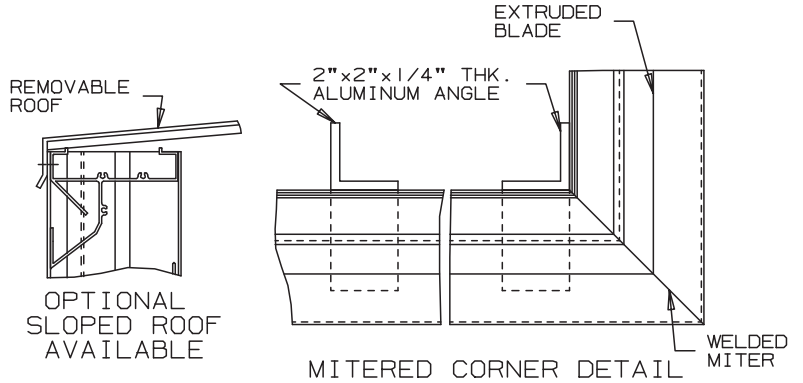
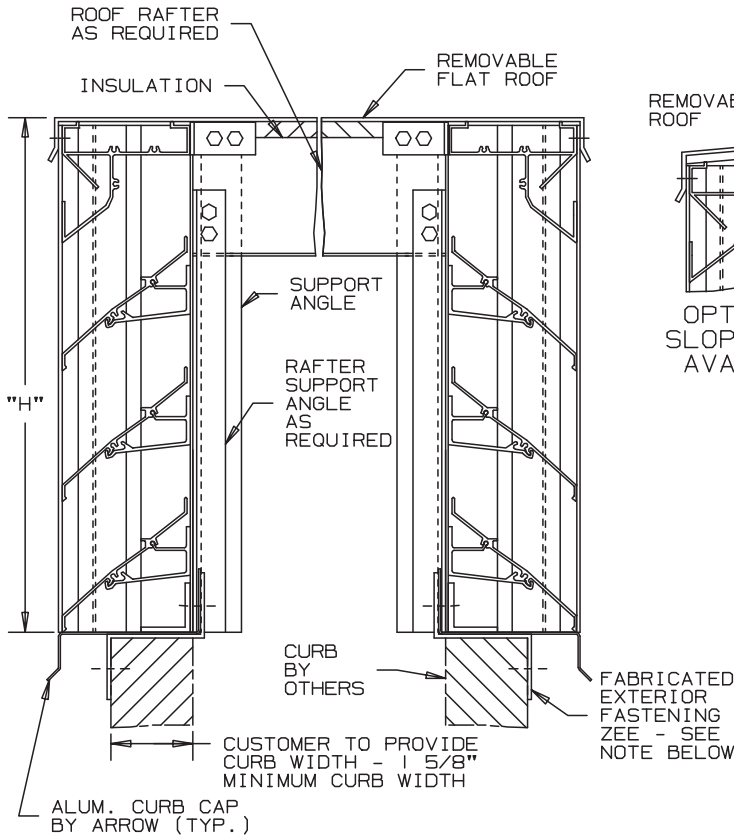


Anemostat®
AIR DISTRIBUTION

MODEL **PHL4W / PHL6W**

LOUVERED PENTHOUSES EXTRUDED ALUMINUM
4" AND 6" DEEP BLADES

EXTERIOR FASTENING INSTALLATION
MITERED CORNER - "J/K" BLADE - STATIONARY



*NOTE:
EXTERIOR MOUNTING ZEE CLIPS SUPPLIED 2"
LONG, SPACED NO MORE THAN 4" FROM EACH
CORNER AND 12" O.C. MAXIMUM.

4" DEEP	6" DEEP
PHL4W "J/K" BLADE	PHL4W "J/K" BLADE

SPECIFICATIONS

MATERIAL: EXTRUDED ALUMINUM SECTIONS OF () .081", () .125" THICKNESS OF 6063-T52/T6 ALLOY. WITH REINFORCING RIB BOSSES.
 ROOF: REMOVABLE ROOF .060" THK. SHEET ALUMINUM REINFORCED WITH ALUMINUM BRACING WHERE REQUIRED TO TAKE A SNOW LOAD OF 40 LBS./SQ.FT. PLUS A REQUIRED SAFETY FACTOR.
 INSULATION: UNDERSIDE OF ROOF IS LINED WITH 1/2" THK. INSULATION.
 SCREENS: (WHEN INDICATED)
 BIRD SCREEN - 1/2" SQUARE MESH, 19 GA. GALVANIZED STEEL, ON INTERIOR.
 NOTE: PENTHOUSE DIMENSIONS "A" OR "B" EXCEEDING 84" SHALL BE SHIPPED IN SECTIONS FOR FIELD ASSEMBLY BY OTHERS.

ITEM	QTY.	"A"	"B"	"C"	"D"	"H"	MULL	TYPE	LOC	CURB WIDTH
								SCREENS		



Anemostat Air Distribution
1220 E. Watson Center Road
Carson, CA 90745
310-835-7500 • air@anemostat.com
www.anemostat-hvac.com

AGENT: _____

ARCH./ENG. : _____
 CONTR. : _____
 PROJECT : _____
 EDR: _____ ECN: _____ JOB: _____
 DATE: _____ DWN. : _____ DWG. : _____