

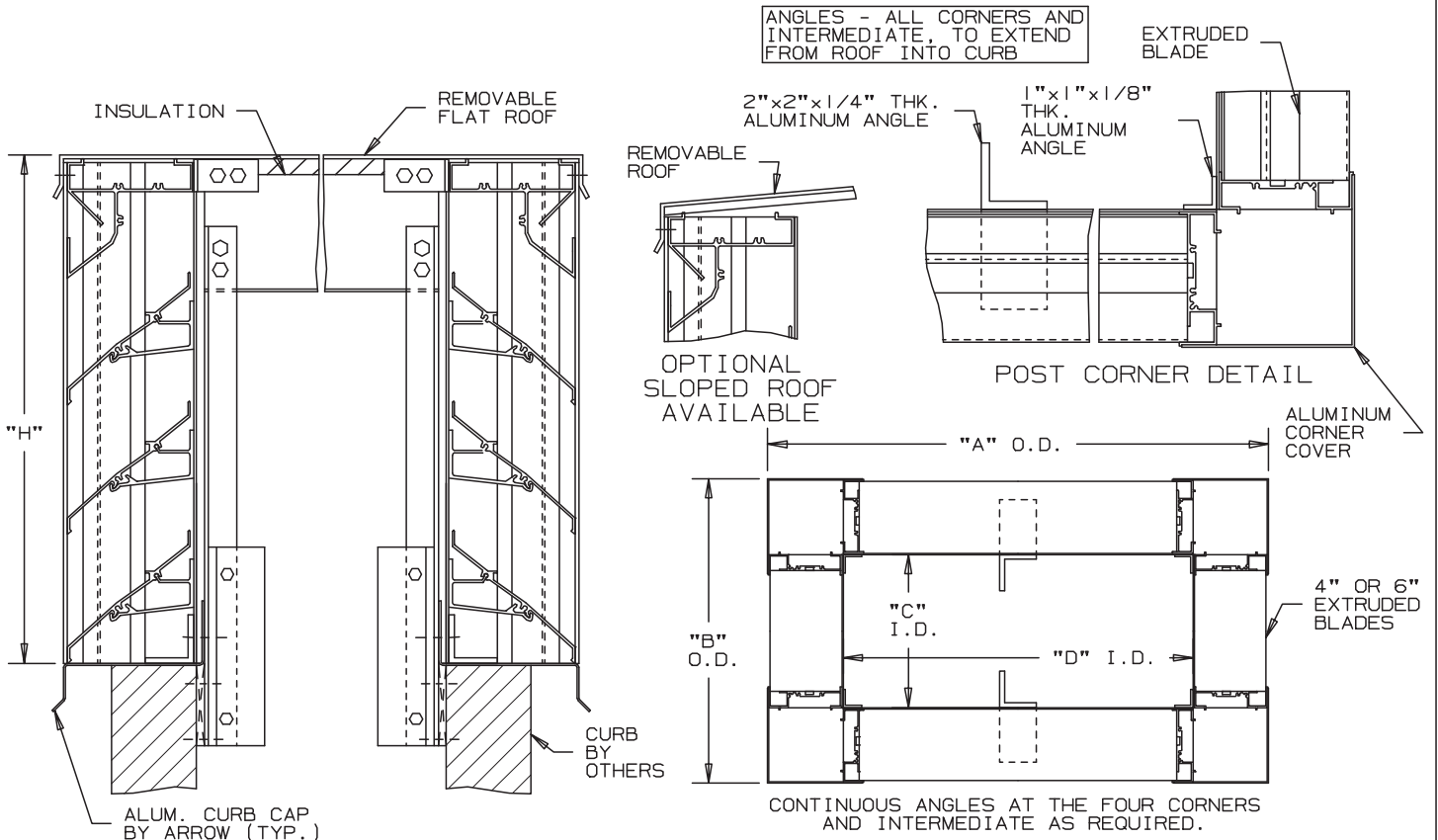


Anemostat®
AIR DISTRIBUTION

MODEL **PHL4P / PHL6P**

LOUVERED PENTHOUSES EXTRUDED ALUMINUM
4" AND 6" DEEP BLADES

INTERIOR FASTENING INSTALLATION
POST CORNER - "J/K" BLADE - STATIONARY



4" DEEP	6" DEEP
PHL4P "J/K" BLADE	PHL6P "J/K" BLADE

SPECIFICATIONS

MATERIAL: EXTRUDED ALUMINUM SECTIONS OF () .081", () .125" THICKNESS OF 6063-T52/T6 ALLOY. WITH REINFORCING RIB BOSSES.
 ROOF: REMOVABLE ROOF .060" THK. SHEET ALUMINUM REINFORCED WITH ALUMINUM BRACING WHERE REQUIRED TO TAKE A SNOW LOAD OF 40 LBS./SQ.FT. PLUS A REQUIRED SAFETY FACTOR.
 INSULATION: UNDERSIDE OF ROOF IS LINED WITH 1/2" THK. INSULATION.
 SCREENS: (WHEN INDICATED)
 NOTE: BIRD SCREEN - 1/2" SQUARE MESH, 19 GA. GALVANIZED STEEL, ON INTERIOR. PENTHOUSE DIMENSIONS "A" OR "B" EXCEEDING 84" SHALL BE SHIPPED IN SECTIONS FOR FIELD ASSEMBLY BY OTHERS.

ITEM	QTY.	"A"	"B"	"C"	"D"	"H"	MULL	TYPE	LOC
								SCREENS	



Anemostat Air Distribution
 1220 E. Watson Center Road
 Carson, CA 90745
 310-835-7500 • air@anemostat.com
 www.anemostat-hvac.com
 AGENT: _____

ARCH./ENG. : _____
 CONTR. : _____
 PROJECT : _____
 EDR: _____ ECN: _____ JOB: _____
 DATE: _____ DWN. : _____ DWG. : _____

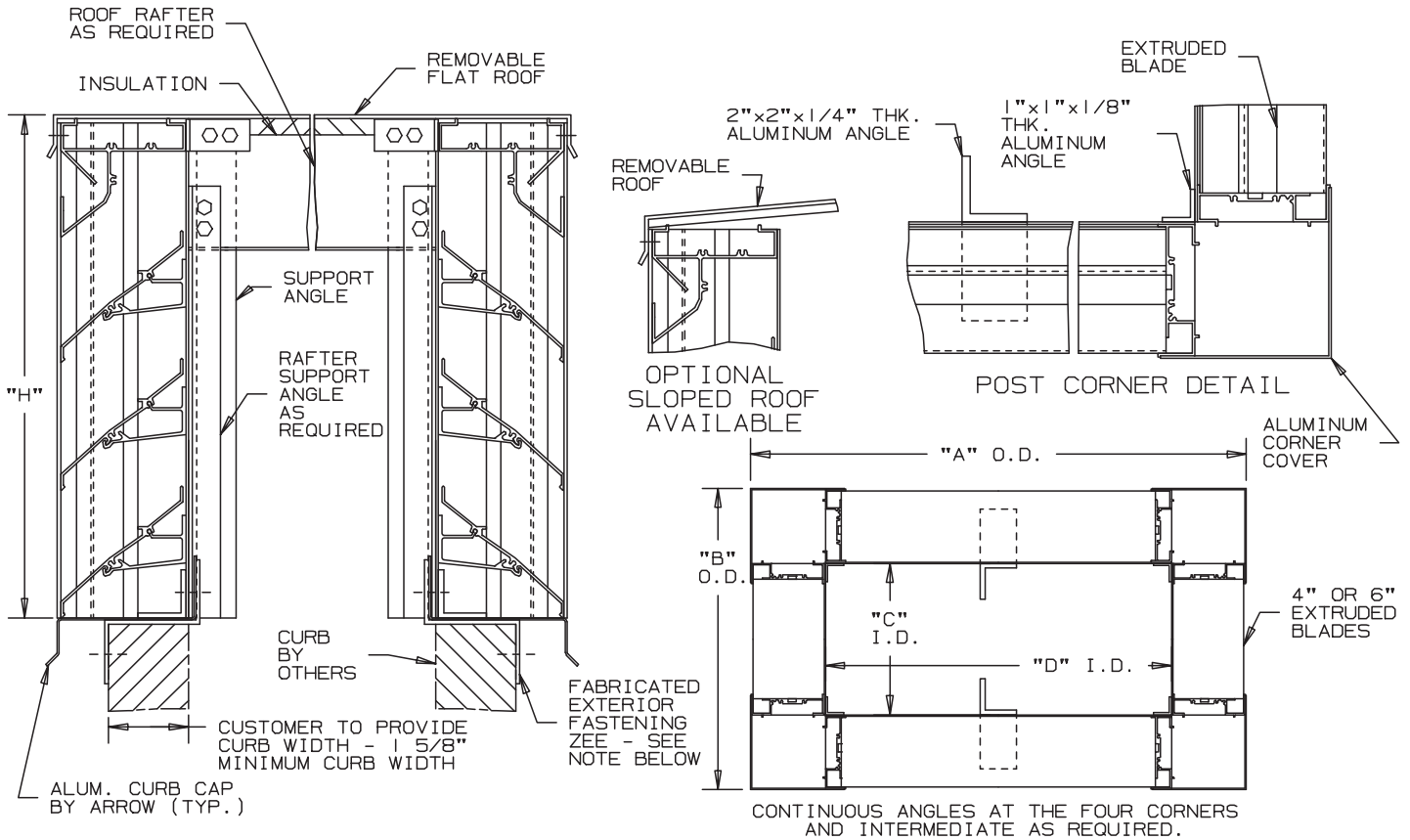


Anemostat®
AIR DISTRIBUTION

MODEL **PHL4P / PHL6P**

LOUVERED PENTHOUSES EXTRUDED ALUMINUM
4" AND 6" DEEP BLADES

EXTERIOR FASTENING INSTALLATION
POST CORNER - "J/K" BLADE - STATIONARY



*NOTE:
EXTERIOR MOUNTING ZEE CLIPS SUPPLIED 2"
LONG, SPACED NO MORE THAN 4" FROM EACH
CORNER AND 12" O.C. MAXIMUM.

4" DEEP	6" DEEP
PHL4P "JK" BLADE	PHL6P "JK" BLADE

SPECIFICATIONS

MATERIAL: EXTRUDED ALUMINUM SECTIONS OF () .081", () .125" THICKNESS OF 6063-T52/T6 ALLOY. WITH REINFORCING RIB BOSSES.
 ROOF: REMOVABLE ROOF .060" THK. SHEET ALUMINUM REINFORCED WITH ALUMINUM BRACING WHERE REQUIRED TO TAKE A SNOW LOAD OF 40 LBS./SQ.FT. PLUS A REQUIRED SAFETY FACTOR.
 INSULATION: UNDERSIDE OF ROOF IS LINED WITH 1/2" THK. INSULATION.
 SCREENS: (WHEN INDICATED)
 BIRD SCREEN - 1/2" SQUARE MESH, 19 GA. GALVANIZED STEEL, ON INTERIOR.
 NOTE: PENTHOUSE DIMENSIONS "A" OR "B" EXCEEDING 84" SHALL BE SHIPPED IN SECTIONS FOR FIELD ASSEMBLY BY OTHERS.

ITEM	QTY.	"A"	"B"	"C"	"D"	"H"	MULL	SCREENS		CURB WIDTH	 UNION MADE
								TYPE	LOC		

Anemostat Air Distribution 1220 E. Watson Center Road Carson, CA 90745 310-835-7500 • air@anemostat.com www.anemostat-hvac.com AGENT: _____	ARCH./ENG. :
	CONTR. :
	PROJECT :
	EDR: _____ ECN: _____ JOB: _____
	DATE: _____ DWN. : _____ DWG. : _____