

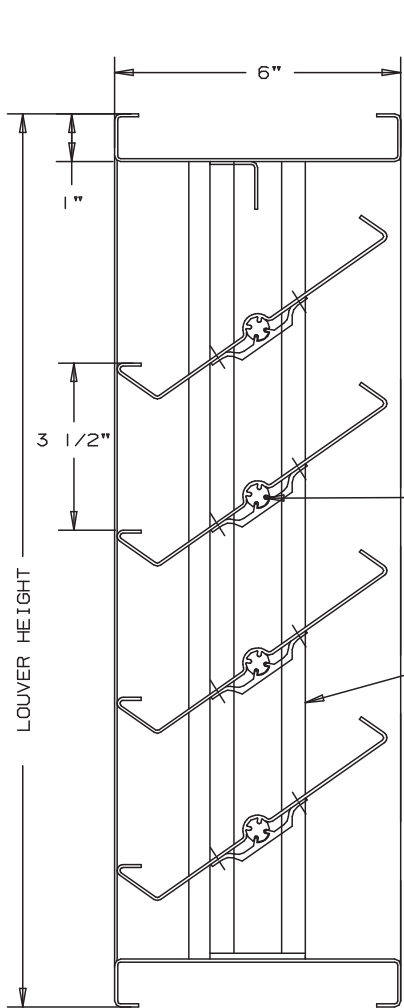


Anemostat®
AIR DISTRIBUTION

MODEL **LS271**

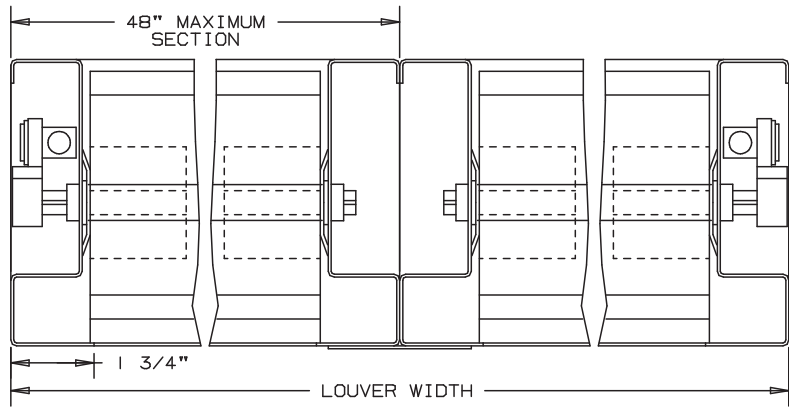
FORMED STEEL LOUVERS
6" DEEP

DRAIN LOUVER - 6" DEEP - ADJUSTABLE



1/2" DIA.
EXT. ALUM.
"PIN-LOCK"
ROD MECH.
FAST. TO
BLADE

STAINLESS
STEEL JAMB
SEAL

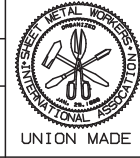
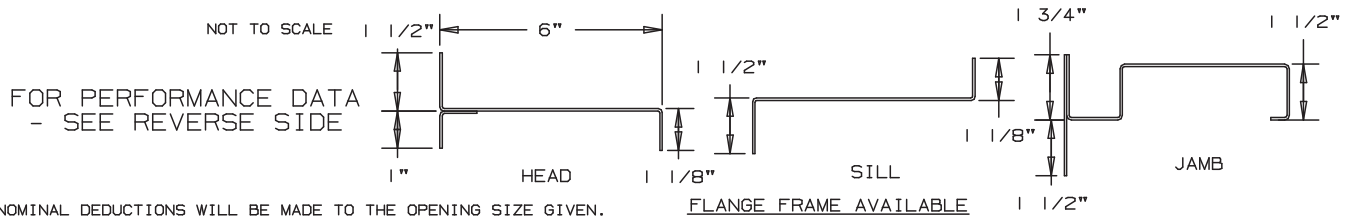


SPECIFICATIONS

FRAMES: 18 GA. GALVANIZED STEEL.
BLADES: 18 GA. GALVANIZED STEEL, OPEN TO 45°.
AXLES: 1/2" DIA. EXTRUDED ALUMINUM "PIN-LOCK" ROD WITH
"DOUBLE-SEALED" BEARINGS.
CONSTRUCTION: WELDED AND/OR RIVETED FOR MAXIMUM SERVICE.
LINKAGE: CONCEALED IN ONE JAMB OUT OF THE AIRSTREAM UP
TO 48" WIDTH.
SEALS: STAINLESS STEEL AT JAMBS.
SCREEN: (WHEN INDICATED) SPECIFY INTERIOR OR EXTERIOR
1/2" SQ. MESH, 19 GA GALVANIZED STEEL, .041"
FINISH: MILL.

OPTIONAL

- FRAMES AND BLADES OF OTHER GAUGES.
- NEOPRENE BLADE EDGE SEALS.
- OTHER GAUGES AND MATERIALS - STAINLESS STEEL, COPPER, ALUMINUM, ETC.
- FINISHES: ENAMELS, EPOXIES, ETC.
- SCREENS: INSECT SCREEN, 18/16 ALUMINUM MESH
1/2" FLATTENED ALUMINUM, .051"
1/4" SQ. MESH, 18 GA GALV. STEEL, .047"
1/2" SQ. MESH, 18 GA. STAINLESS STEEL, .047 PLUS OTHERS



UNION MADE

ITEM	QTY.	OPENING SIZE		LOUVER SIZE		MULL	SCREENS	
		WIDTH	HEIGHT	WIDTH	HEIGHT		TYPE	LOC

Anemostat Air Distribution
1220 E. Watson Center Road
Carson, CA 90745
310-835-7500 • air@anemostat.com
www.anemostat-hvac.com

AGENT: _____

ARCH./ENG. :
CONTR. :
PROJECT :
EDR: ECN: JOB:
DATE: DWN. : DWG. :

MODEL LS271

DRAIN LOUVERS

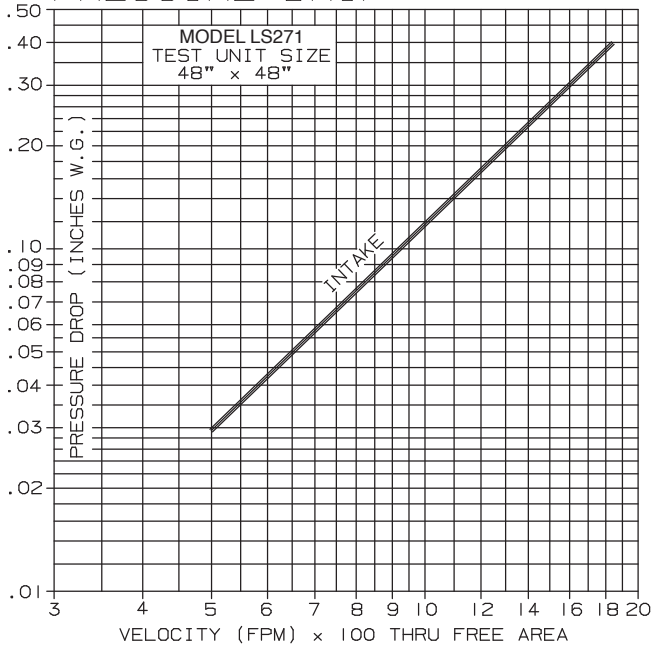
FORMED STEEL - STATIONARY

PERFORMANCE DATA

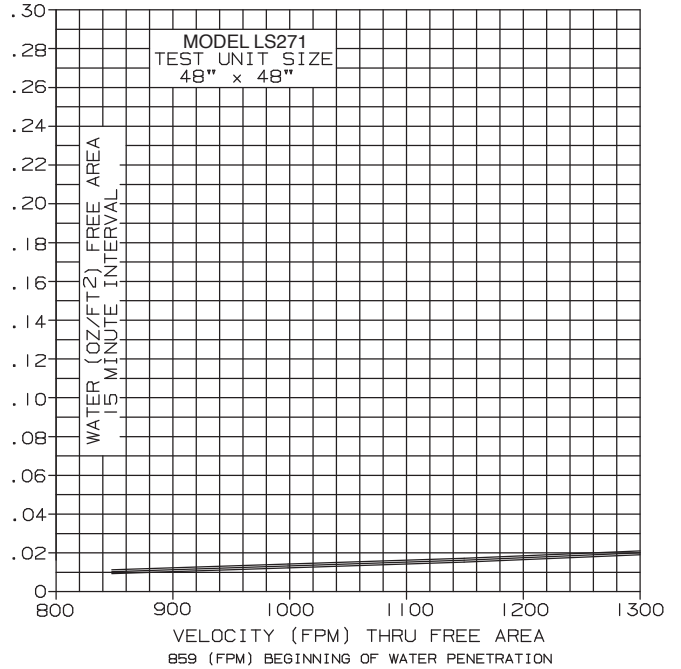
LESS WATER PENETRATION BECAUSE RAIN RUNS ALONG BLADE TROUGHS, (RATHER THAN DOWN FACE OF LOUVER), THEN DOWN HIDDEN VERTICAL RUNWAYS WITHIN THE JAMBS.
 TESTS OF A 48" x 48" SAMPLE BY AN AMCA REGISTERED LABORATORY ACCORDING TO AMCA STANDARD 500 SHOWS LOW WATER PENETRATION. TESTS SHOW LESS THAN .02 OZ. PER SQ. FT. WATER PENETRATION AT 1200 FPM (FREE AREA VELOCITY) WITH LESS THAN .18" W.G. PRESSURE DROP (INTAKE).

RATINGS DO NOT INCLUDE EFFECTS OF BIRDSCREEN.

PRESSURE DROP



WATER PENETRATION



FREE AREA

		FREE AREA (SQ. FT.)								
		WIDTH								
		12"	18"	24"	30"	36"	42"	48"	54"	60"
HEIGHT	12"	.31	.51	.71	.91	1.10	1.30	1.50	1.66	1.89
	24"	.75	1.21	1.67	2.14	2.61	3.07	3.54	4.01	4.47
	36"	1.27	2.05	2.84	3.64	4.43	5.23	6.02	6.81	7.61
	48"	1.73	2.90	4.02	5.14	6.26	7.38	8.50	9.62	10.74
	60"	2.23	3.59	4.98	6.37	7.76	9.15	10.54	11.93	13.32
	72"	2.72	4.44	6.15	7.87	9.58	11.30	13.02	14.74	16.46
84"	3.19	5.13	7.12	9.10	11.09	13.08	15.06	17.05	19.04	
96"	3.71	5.98	8.29	10.60	12.92	15.23	17.54	19.86	22.17	

* AMCA REGISTERED LABORATORY IS A LABORATORY EQUIPPED AND STAFFED TO CONDUCT TESTS ACCORDING TO THE APPROPRIATE AMCA TEST METHOD AND WHICH HAS BEEN LICENSED AS A AMCA REGISTERED LABORATORY.