

Complete the following steps to mount a KMC Conquest STE-9000 Series Digital NetSensor and connect it to a Conquest BAC-59xx/9xxx Controller.



**STE-90xx/93xx**



**STE-92xx/95xx  
with Motion Sensor**

**NOTE:** See the [Conquest NetSensors STE-9000 Series Digital Room Sensors](#) data sheet and the [Conquest Selection Guide](#) at [kmcontrols.com](http://kmcontrols.com) for specifications and other information.



### SELECT MOUNTING LOCATION

See the [Room Sensor and Thermostat Mounting Location and Maintenance Application Guide](#) for cautions, troubleshooting, and best practices.

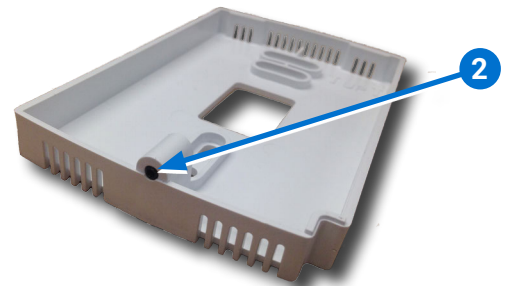
**NOTE:** Complete rough-in-wiring at each location before installing a sensor.

### REMOVE BACKPLATE

1. Turn the **hex screw** 1 clockwise into the sensor until the screw clears the cover.



**NOTE:** The hex screw 2 should remain in the backplate.

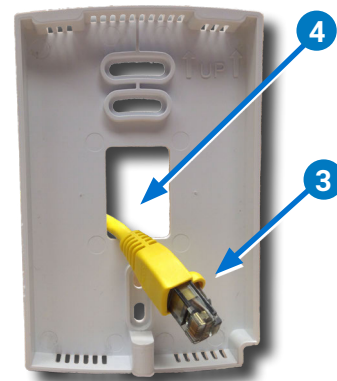


2. Pull the cover off the backplate.

### CONNECT ETHERNET CABLE

3. Feed the **Ethernet patch cable** 3 from the Conquest controller through the center of the **backplate** 4.

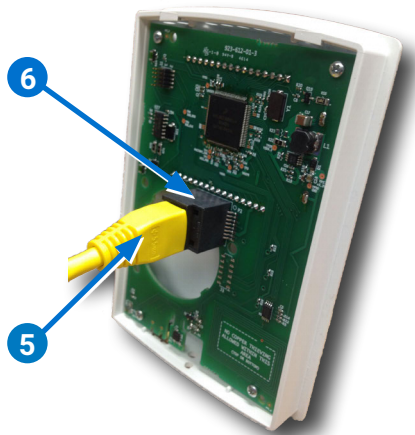
**NOTE:** The Ethernet patch cable should be a maximum of 150 feet (45 meters).



4. Mount the backplate on an electrical box using the provided screws.

**NOTE:** If additional thermal insulation is needed, install the optional **HPO-9002** gasket before installing the backplate. For more information, see the **Room Sensor and Thermostat Mounting Location and Maintenance Application Guide**.

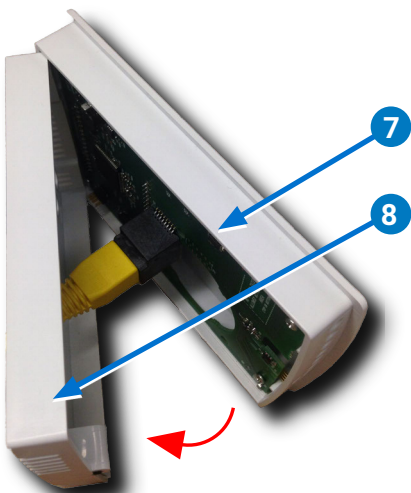
5. Plug the **Ethernet cable 5** into the **modular jack 6** of the sensor.



## INSTALL SENSOR COVER

6. Place the **cover 7** over the top of the **backplate 8** and swing it down.

**NOTE:** Be careful not to pinch the Ethernet cable.



7. Turn the **hex screw 9** counterclockwise until it engages the cover.



## OPERATE

The STE-9000 Series NetSensor becomes operational after it is connected to a powered Conquest controller.

**NOTE:** To change setpoints or configuration, see the **KMC Conquest Controller Application Guide**.

**NOTE:** For continued maximum NetSensor efficiency, see the maintenance section in the **Room Sensor and Thermostat Mounting Location and Maintenance Application Guide**.

## IMPORTANT NOTICES

The material in this document is for information purposes only. The contents and the product it describes are subject to change without notice.

KMC Controls, Inc. makes no representations or warranties with respect to this document. In no event shall KMC Controls, Inc. be liable for any damages, direct, or incidental, arising out of or related to the use of this document.

The KMC logo is a registered trademark of KMC Controls, Inc. All rights reserved.

TEL: 574.831.5250  
FAX: 574.831.5252  
e-mail: [info@kmccontrols.com](mailto:info@kmccontrols.com)

