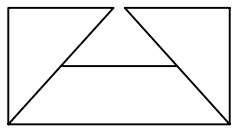


SUBMITTAL SHEET



from: **ANEMOSTAT**[®]
A MESTEK COMPANY

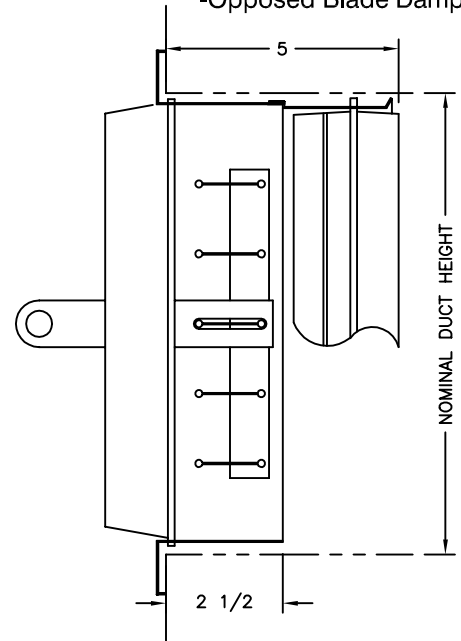
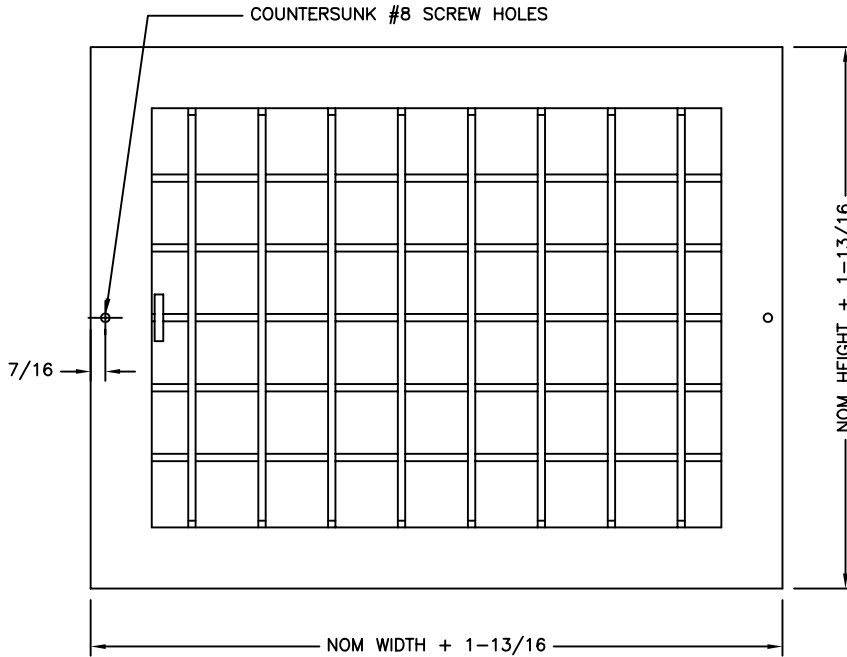
CARSON CA
 310-835-7500

MODEL
XIS

DOUBLE DEFLECTION
 SUPPLY GRILLE/REGISTER
 FOR
 POLE OPERATION

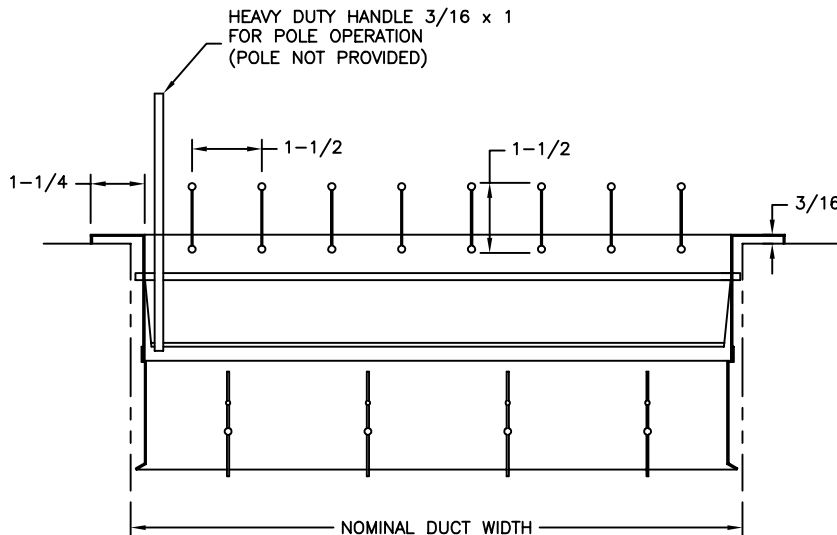
XISV W/ OB

- Front Louvers Vertical
- Rear Louvers Horizontal
- Opposed Blade Damper



XISV

- Front Louvers Vertical
- Rear Louvers Horizontal



- When louver length exceeds 18", support mullion is used.
- When height dimension exceeds 24", second set of louvers is split into two sections with two handles & two movement bars.
- Frame .055 thick extruded aluminum
- Louvers Ø.170 barrels, .062 thick aluminum.
- Tensioned by heavy stainless steel wire interwoven at ends of louvers.
- Rear louvers gang operated.
- Front louvers individually adjustable
- Max. size one section 48 x 48.
- Finish: Standard white.

All Dimensions are in Inches

JOB NAME:	SUBMITTED BY:
LOCATION:	
ARCHITECT:	
ENGINEER:	
CONTRACTOR:	DWG # GRS-0103
	DATE 1-15-04 REV A