

# SUBMITTAL SHEET

www.anemostat-hvac.com

**9/16" NARROW SLOT  
 GRID SYSTEM**
**PRODUCT FEATURES**

- Outer frame designed to perfectly integrate with 9/16" Narrow Slot - type grid system.
- Welded corner with standard 90° face miter. Other angles available.
- Corner is INACTIVE and should not be ducted for supply air.
- The corner has the same exact cross-sectional dimensions as the linear connecting to it. Refer to the linear diffuser submittal for more details.
- Retains similar appearance as adjoining linear diffusers connected to it.

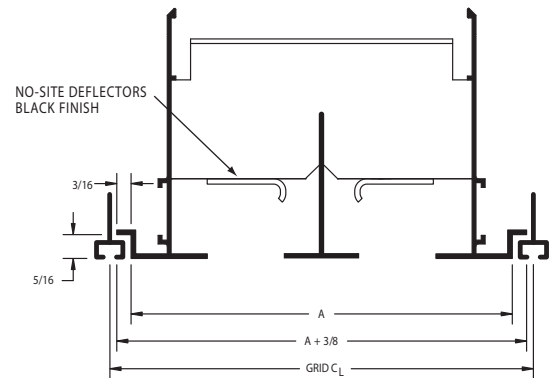
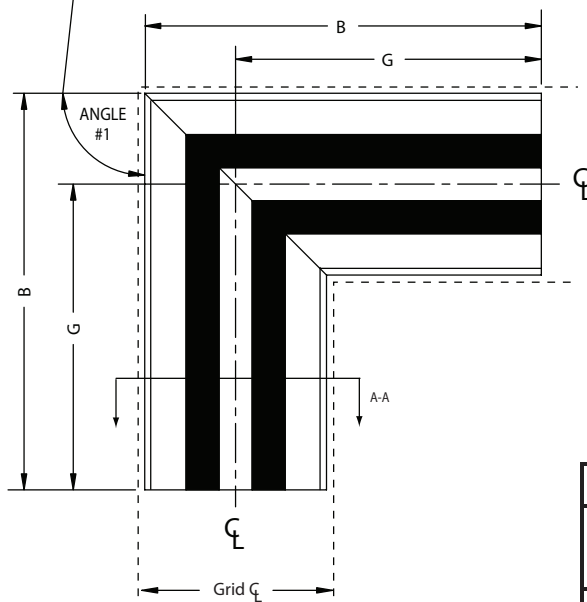
**CONSTRUCTION DETAILS**

- Material: Extruded Aluminum
- Finish: Arctic white outer flanges and center tees
- No-site black deflector centered in each slot
- Custom Colors (Optional)

**ACCESSORIES**

- Blank-off plate (factory installed) coated steel

 ANGLE #1 = 90° SHOWN  
 OTHER ANGLES  
 AVAILABLE

**Viewed From Diffuser Face  
 (2-Slot - 90° Shown)**


FF-D1-MFC-100 • 1" S SLOT WIDTH

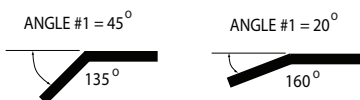
# SLOTS	Section A - A Grid C <sub>L</sub>	A	G	B
1	4-1/2	3-7/8	10	12-1/8
2	6-1/2	5-7/8	10	13-1/8
3	8-1/2	7-7/8	14	18-1/8
4	10-1/2	9-7/8	14	19-1/8

FF-D1-MFC-150 • 1-1/2" SLOT WIDTH

# SLOTS	Section A - A Grid C <sub>L</sub>	A	G	B
1	5-1/2	4-7/8	10	12-5/8
2	8-1/2	7-7/8	10	14-1/8
3	11-1/2	10-7/8	14	19-5/8
4	14-1/2	13-7/8	14	21-1/8

**NOTES ABOUT ANGLES WHEN ORDERING:**

- The angle when ordering is Angle #1 as shown above.
- Examples of other angles and how to order:



All dimensions are in inches.

JOB NAME:

SUBMITTED BY: