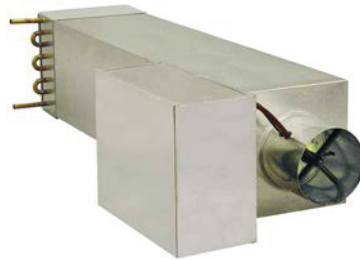


SUBMITTAL SHEET

www.anemostat-hvac.com

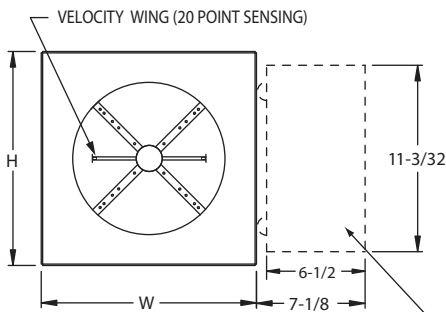


PRODUCT FEATURES

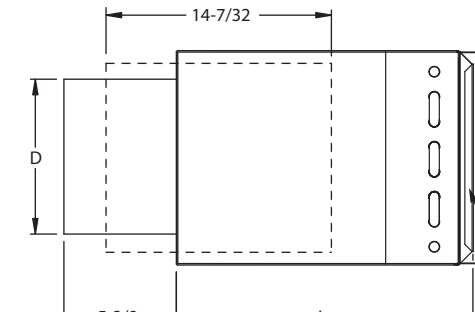
- Increased coil face area for higher BTU/HR output
- 1, 2, 3, or 4 row hot water coils with 1/2" o.d. copper tubes thru aluminum corrugated fins @ 10 per inch.
- 22 gauge zinc-coated steel, low leakage casing construction sealed to limit leakage to <1% of max rated flow at 3" w.g. static pressure.
Optional: 20 gauge construction Ultra Lo-Leak construction
- 1/2" dual density insulation (NFPA 90A, UL 181).
Optional: 1" dual density glass fiber insulation
 1/2" 1" foil faced glass fiber insulation – metal taped edges (ASTM C665)
 3/8" fiber free closed cell foam insulation (NFPA255, UL181)
 1/2" 1" dual wall construction
 Lo-Temp casing construction
 1" Fibre-Lok : High density foil-faced duct board with steel encapsulated edges (ASTM C665)
 No insulation
- 90° inlet damper with leak resistant perimeter seal limiting leakage to <1% of max rated flow at 3" w.g. inlet static pressure.
- Multi-Point center averaging Velocity Wing air flow sensor for accuracy to ± 5% of design flow. Optional Flow Taps / Tees
- Slip & drive cleat discharge connection.
- Choice of right hand or left hand control position.
- Optional Accessories:
 6 x 6 Access Plate 6 x 6 Access Door Bottom Side
 Hinged Double Camlock
 Unit mounting brackets (field installed)
 Standard control enclosure Large control enclosure
 Screw attached cover Hinged cover
- Control System : Digital Electronic Analog Pneumatic Electric
 None – No controls By ATC - Factory Installed
 By Anemostat By ATC - Field Installed

INLET VIEW

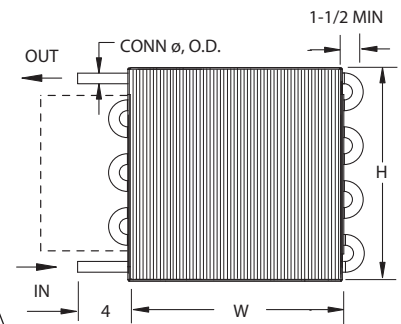
(R.H. CONTROLS SHOWN)



SIDE VIEW



DISCHARGE VIEW



OPTIONAL CONTROL ENCLOSURE (STANDARD SIZE SHOWN) SLIP & DRIVE CLEAT CONNECTION

All dimensions are in inches.

| Unit Size | Airflow Range, CFM | Inlet Dia D | W | H | 1 Row Coil | | | 2 Row Coil | | | 3 Row Coil | | | 4 Row Coil | | |
|-----------|--------------------|-------------|----|--------|------------|--------------|---------------|------------|--------------|---------------|------------|--------------|---------------|------------|--------------|---------------|
| | | | | | L | Conn ø, O.D. | Approx Weight | L | Conn ø, O.D. | Approx Weight | L | Conn ø, O.D. | Approx Weight | L | Conn ø, O.D. | Approx Weight |
| 0508 | 0 - 290 | 4-7/8 | 12 | 10 | 42-5/8 | 1/2 | 27 | 43-11/16 | 1/2 | 30 | 44-3/4 | 7/8 | 34 | 46-5/16 | 7/8 | 37 |
| 0608 | 0 - 470 | 5-7/8 | 12 | 10 | 42-5/8 | 1/2 | 27 | 43-11/16 | 1/2 | 30 | 44-3/4 | 7/8 | 34 | 46-5/16 | 7/8 | 37 |
| 0710 | 0 - 615 | 6-7/8 | 14 | 12-1/2 | 42-5/8 | 1/2 | 38 | 43-11/16 | 1/2 | 41 | 44-3/4 | 7/8 | 47 | 46-5/16 | 7/8 | 52 |
| 0810 | 0 - 870 | 7-7/8 | 14 | 12-1/2 | 42-5/8 | 1/2 | 38 | 43-11/16 | 1/2 | 41 | 44-3/4 | 7/8 | 47 | 46-5/16 | 7/8 | 52 |
| 0912 | 0 - 1100 | 8-7/8 | 16 | 15 | 42-5/8 | 7/8 | 45 | 43-11/16 | 1/2 | 49 | 44-3/4 | 7/8 | 56 | 46-5/16 | 7/8 | 63 |
| 1012 | 0 - 1355 | 9-7/8 | 16 | 15 | 42-5/8 | 7/8 | 45 | 43-11/16 | 1/2 | 49 | 44-3/4 | 7/8 | 56 | 46-5/16 | 7/8 | 63 |
| 1214 | 0 - 1800 | 11-7/8 | 20 | 17-1/2 | 42-5/8 | 7/8 | 54 | 43-11/16 | 7/8 | 61 | 44-3/4 | 7/8 | 69 | 45-3/16 | 7/8 | 78 |
| 1416 | 0 - 2470 | 13-7/8 | 24 | 17-1/2 | 42-5/8 | 7/8 | 64 | 43-11/16 | 7/8 | 72 | 44-3/4 | 7/8 | 82 | 45-3/16 | 7/8 | 93 |

NOTES:

1. SIDE ACCESS DOOR IS LOCATED SAME SIDE AS THE CONTROL SIDE AS STANDARD.
2. AIRFLOW RANGE SHOWN IS FOR SENSOR dP = 1.00". CONSULT VAV CONTROLLER SPECIFICATIONS FOR ACTUAL MIN AND MAX dP LIMITS.
3. WEIGHT SHOWN IS TOTAL ASSEMBLY WET WEIGHT IN LBS (8.3 LBS / GALLON)
4. OPTIONAL CONTROL ENCLOSURE LOCATION WILL VARY BASED ON CONTROLS INSTALLED.

JOB NAME:

SUBMITTED BY:

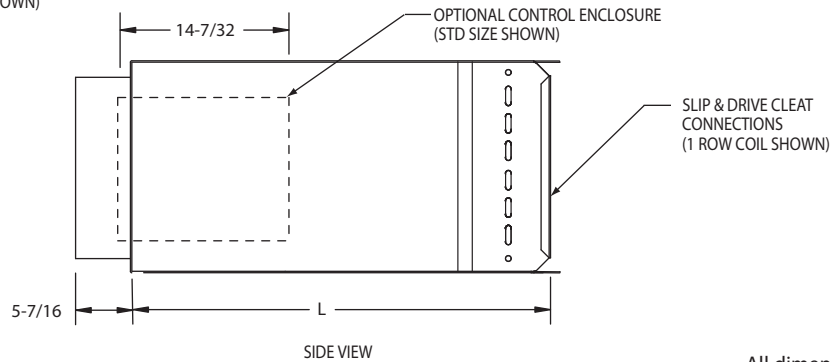
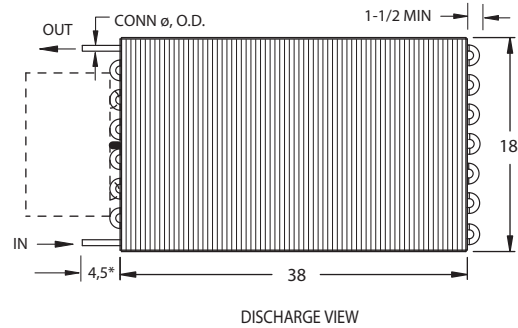
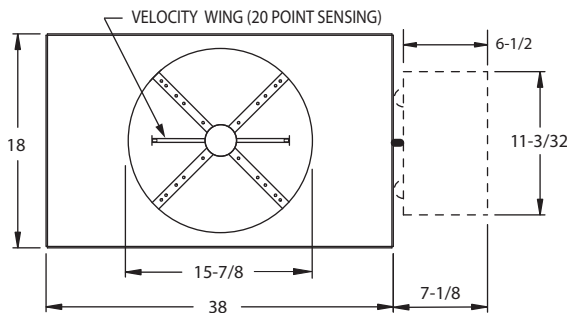
SUBMITTAL SHEET

www.anemostat-hvac.com

INLET SIZE 16"

PRODUCT FEATURES

- Increased coil face area for higher BTU/HR output
- 20 gauge zinc-coated steel, low leakage casing construction sealed to limit leakage to <1% of max rated flow at 3" w.g. static pressure.
 - Optional: Ultra Lo-Leak construction
- 1/2" dual density insulation (NFPA 90A, UL 181).
 - Optional: 1" dual density glass fiber insulation
 - 1/2" 1" foil faced glass fiber insulation – metal taped edges (ASTM C665)
 - 3/8" fiber free closed cell foam insulation (NFPA255, UL181)
 - 1/2" 1" dual wall construction
 - Lo-Temp casing construction
 - 1" Fibre-Lok : High density foil-faced duct board with steel encapsulated edges (ASTM C665)
 - No insulation
- 1, 2, 3, or 4 row hot water coils with 1/2" o.d. copper tubes thru aluminum corrugated fins @ 10 per inch.
 - 90° multi-blade inlet damper with leak resistant perimeter and jamb seals limiting leakage to <1% of max rated flow @ 3" w.g. inlet static pressure.
 - Multi-Point center averaging Velocity Wing air flow sensor for accuracy to ± 5% of design flow. Optional Flow Taps / Tees
 - Slip & drive cleat discharge connection.
 - Choice of right hand or left hand control position.
 - Optional Accessories:
 - 6 x 6 Access Plate 6 x 6 Access Door Bottom Side
 - Hinged Double Camlock
 - Unit mounting brackets (field installed)
 - Standard control enclosure Large control enclosure
 - Screw attached cover Hinged cover
 - Control System : Digital Electronic Analog Pneumatic Electric
 - None – No controls By ATC - Factory Installed
 - By Anemostat By ATC - Field Installed



All dimensions are in inches.

| Unit Size | Airflow Range, CFM | 1 Row Coil | | | 2 Row Coil | | | 3 Row Coil | | | 4 Row Coil | | |
|-----------|--------------------|------------|--------------|---------------|------------|--------------|---------------|------------|--------------|---------------|------------|--------------|---------------|
| | | L | Conn Ø, O.D. | Approx Weight | L | Conn Ø, O.D. | Approx Weight | L | Conn Ø, O.D. | Approx Weight | L | Conn Ø, O.D. | Approx Weight |
| 1624 | 0 - 3370 | 44-1/2 | 7/8 | 121 | 44-1/2 | 7/8 | 133 | 45-1/2 | 1-1/8 | 150 | 45-1/2 | 1-1/8 | 162 |

NOTES:

1. AIRFLOW RANGE SHOWN IS FOR SENSOR dP = 1.00". CONSULT VAV CONTROLLER SPECIFICATIONS FOR ACTUAL MIN AND MAX dP LIMITS.
2. WEIGHT SHOWN IS TOTAL ASSEMBLY WET WEIGHT IN LBS (8.3 LBS / GALLON)
3. OPTIONAL CONTROL ENCLOSURE LOCATION WILL VARY BASED ON CONTROLS INSTALLED.
4. HEADER DIMENSION FROM SIDE OF COIL IS 4" FOR 1, 2 ROW, AND 5" FOR 3, 4 ROW COILS.

JOB NAME:

SUBMITTED BY: