

PRODUCT FEATURES

- The Dx-R ceiling supply diffuser includes internal nozzles that mixes supply air with induction air.
- Various capacities available to match space and loading conditions.
- 1/2" internal fiberglass insulation is standard.
- Side oval inlet collar allow for a low profile installation.
- Air flow balancing port to determine supply air quantity.
- Plenum is coated steel

DIFFUSER CONSTRUCTION DETAILS

Material: 22 GA Cold Rolled Steel (std)

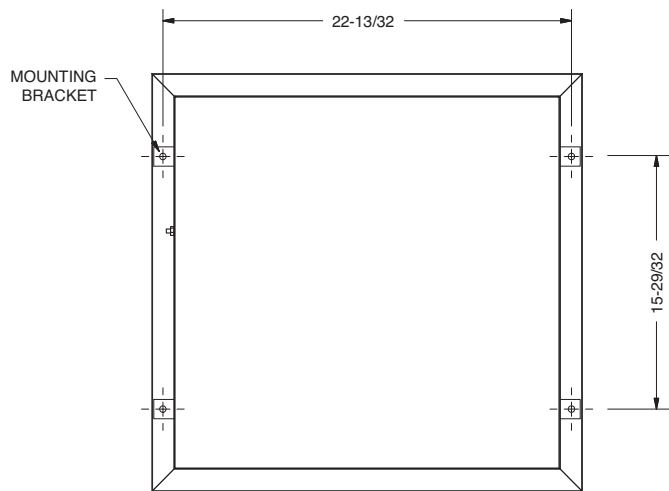
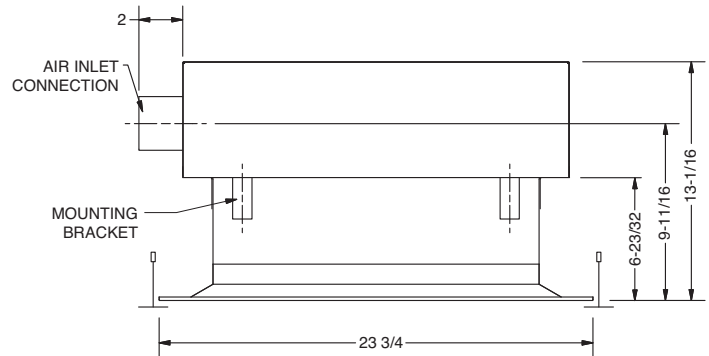
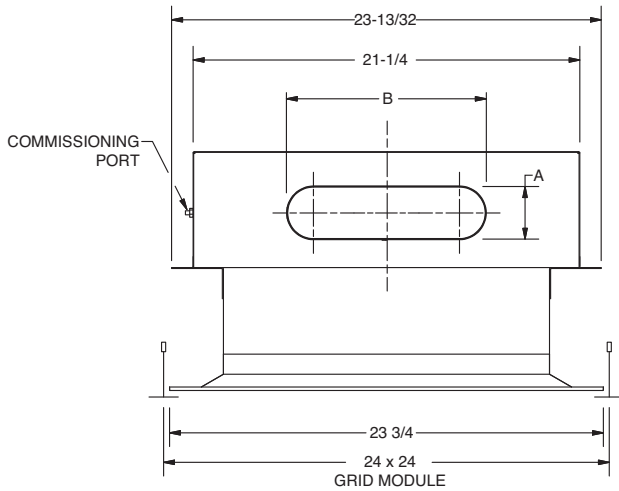
- 20 GA Aluminum (opt)
- 22 GA 304 Stainless Steel (opt)

Diffuser Finish: White (std)

- Custom Colors (opt)

Accessories

- DQ** Damper



MOUNTING HOLE LOCATION

PLAN VIEW

| MODEL Dx-R • ROOM INDUCTION | | | |
|-----------------------------|-------------------|---|---------|
| CAPACITY | INLET SIZE (OVAL) | A | B |
| A | 6 | 4 | 6-15/16 |
| B | 8 | 4 | 10-3/32 |
| C | 10 | 4 | 13-1/4 |

All dimensions are in inches.

JOB NAME:

SUBMITTED BY: