

# SUBMITTAL SHEET

www.anemostat-hvac.com

## DESCRIPTION AND APPLICATION

These CSC-3011 series reset volume controllers are designed for use on heating or cooling systems with (normally open or normally closed) VAV terminal units and (direct or reverse acting) thermostats.

They are sub-master air velocity controllers. Each is equipped with separate adjustment knobs for minimum and maximum airflow setpoints. Models are available with various reset start points. A master controller, typically a room thermostat, resets the CSC-3011 between the minimum and maximum velocity setpoints.

The universal design of the CSC-3011 series is intended for new or replacement applications that call for direct or reverse acting reset on normally open or normally closed VAV terminal units.

## MODELS

**NOTE:** See the Model Selection Chart on the next page.  
CSC-3011 0 to 1" range

**NOTE:** These CSC-3011 Series controllers are position sensitive. They must be mounted and calibrated in either the horizontal or vertical plane.

## FEATURES

- Adjustable direct or reverse acting reset (normally open or normally closed damper settings)
- Adjustable minimum and maximum setpoints
- Available with factory-set 3, 8, or 10 psig reset start points (field-adjustable 0–10 psig if necessary)
- See the Specifications section for more details

## FACTORY CONFIGURED

- All controls are factory calibrated and adjusted as required by the applicable control sequence.



All dimensions are in inches.

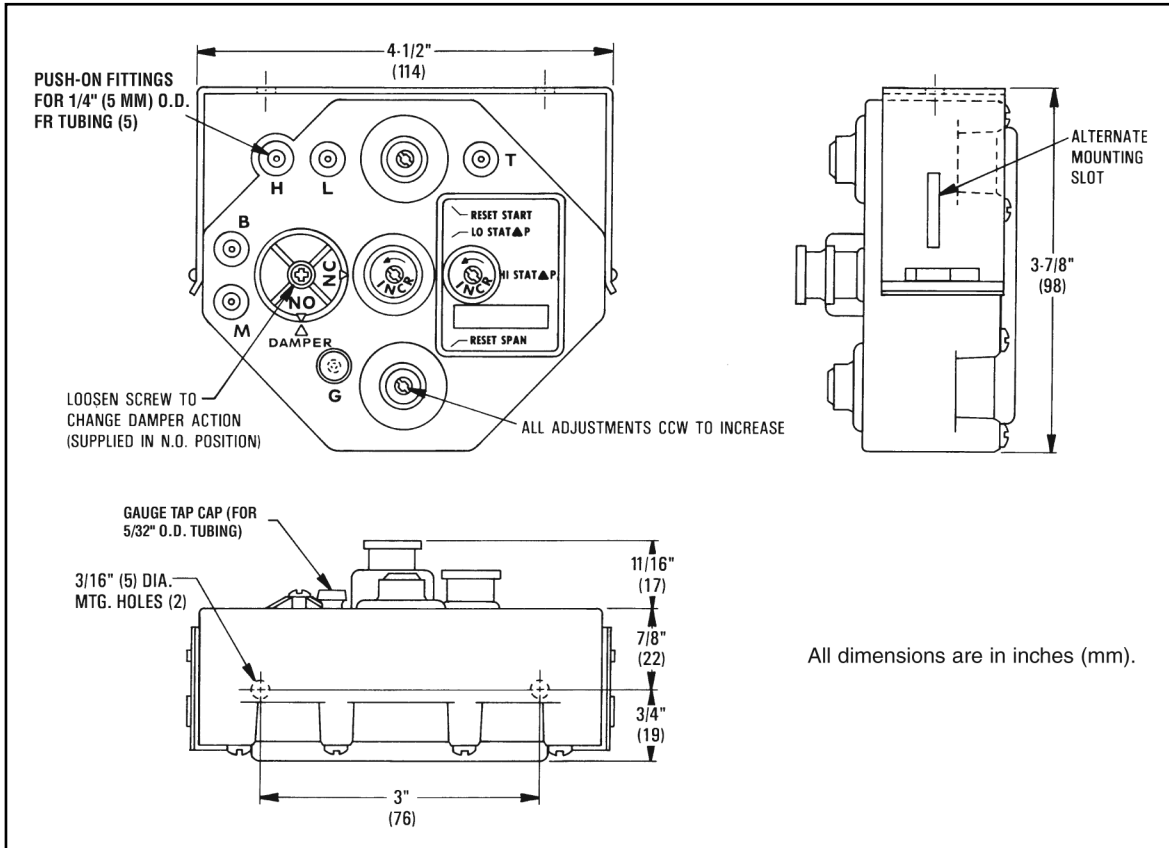
JOB NAME:

SUBMITTED BY:

# SUBMITTAL SHEET

www.anemostat-hvac.com

## DETAILS



All dimensions are in inches (mm).

## SPECIFICATIONS

Model #	Reset Start Point Factory Set (all field-adjustable 0-10 psig)	Differential Pressure	Min. Setpoint	Max. Setpoint	Output Sensitivity	Air Consumption
CSC-3011	8 psig (55 kPa)	0 to 1.0" wc (249 Pa)	0 to 1.0" wc (249 Pa)	Min. to 1.0" wc (249 Pa)	5 psi/0.02" wc (35 kPa/5 Pa)	28.8 scim @ 20 psig (7.87 mL/s @ 138 kPa)

<b>Damper Action</b>	Factory set, adjustable for NC or NO
<b>Thermostat Action</b>	Direct or reverse action
<b>Main Air Pressure</b>	15 to 30 psig (103 to 207 kPa)
<b>Max. Signal Pressure</b>	6" we (1493 Pa) applied to either port (H or L)
<b>Reset Span</b>	Factory set @ 5 psig (35 kPa)
<b>Temperature Limits</b>	
Operating	40° to 120° F (4° to 49° C)
Shipping	-40° to 140° F (-40° to 60° C)

<b>Material</b>	ABS
<b>Weight</b>	11 oz. (312 grams)

### ⚠ CAUTION

Pneumatic devices must be supplied with clean, dry control air. Any other medium (e.g., oil or moisture contamination) will cause the device to fail.

All dimensions are in inches.

JOB NAME:

SUBMITTED BY: