

SUBMITTAL SHEET

www.anemostat-hvac.com

Unducted

PRODUCT FEATURES

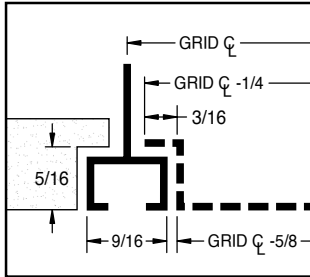
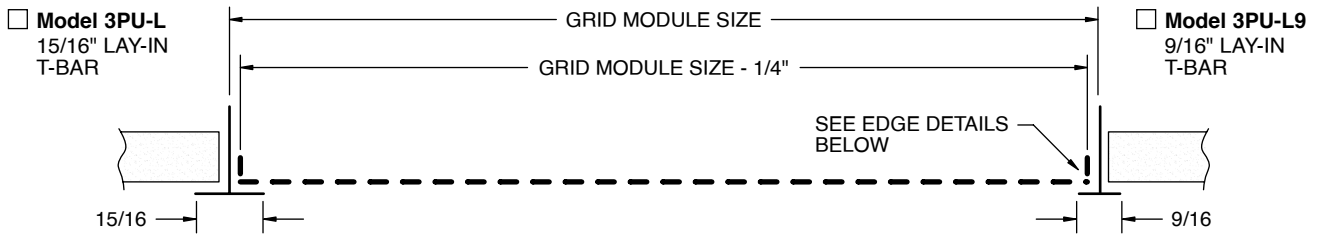
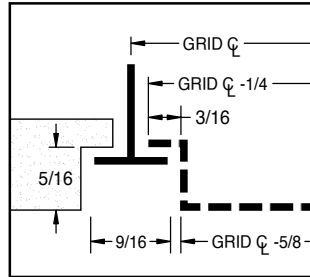
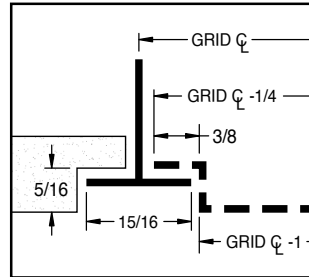
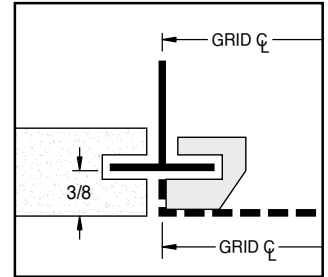
- Ceiling Return / Exhaust applications
- 3/16" ϕ holes on 1/4" centers (51% free area)

CONSTRUCTION DETAILS
Material:

- Steel
- Aluminum
- 304 Stainless Steel

Finish:

- Arctic White
- Satin Polish
- Custom Color _____


 Model 3PU-D
 9/16" NARROW SLOT

 Model 3PU-T9
 9/16" TEGULAR

 Model 3PU-T
 15/16" TEGULAR

 Model 3PU-C
 CONCEALED SPLINE

MODEL	APPLICATION	FACE/MODULE SIZE
3PU	L	22
Unducted Return, Screen Only	L Lay-In, 15/16" Inverted T-Bar	11 12" x 12"
	L9 Lay-In, 9/16" Inverted T-Bar	12 12" x 24"
	D 9/16" Narrow Slot	16 16" x 16"
	T 15/16" Tegular	20 20" x 20"
	T9 9/16" Tegular	22 24" x 24"
	C Concealed Spline	30 30" x 30"
		24 24" x 48"

All dimensions are in inches.

JOB NAME:
SUBMITTED BY: