

# S-VENT<sup>®</sup>

## SUBMITTAL SHEET



1220 WATSONCENTER ROAD • CARSON, CA 90745-4206  
 (310) 835-7500 • FAX (310) 835-0448  
 e-mail: airsec@anemostat.com • website: www.anemostat-hvac.com

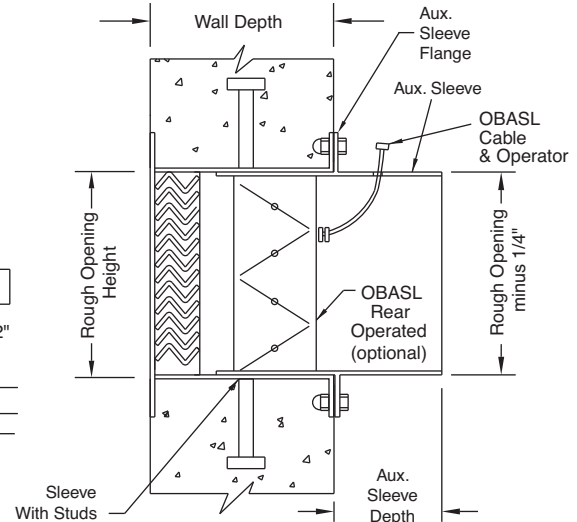
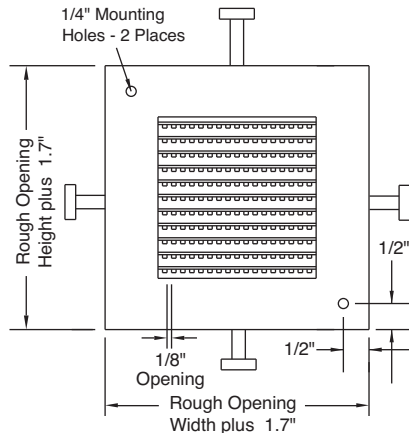
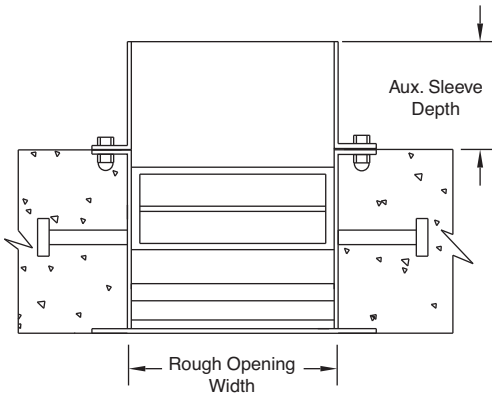
# SV2-\_\_-PC

SPECIFY TYPE  
**MAXIMUM SECURITY GRILLE**  
 1/8" X 1/8" OPENING  
 with  
 ANCHOR STUDS FOR  
 PRECAST CONCRETE

TOP SECTION

FRONT SECTION

SIDE SECTION



**IMPORTANT:** It is the specifier's responsibility to properly configure the HVAC system to meet the appropriate level of comfort, safety, security and detention

### PRODUCT FEATURES

**Face Flange**

12 GA (standard)

**Material Type**

Cold Rolled Steel (standard)

**Horizontal Louvers/Vertical Mullions**

12 GA with 1 7/16" Neck Depth (std)

**Finish**

White Powder Coat (std)

Other Powder Coat Colors \_\_\_\_\_

**Sleeve (standard)**

12 GA - specify length \_\_\_\_\_

**Auxiliary Sleeve with Flange (optional)**

14 GA - specify length \_\_\_\_\_

**Opposed Blade Damper (optional)**  
 (shipped loose)

Rear Operated with ASL Cable

**Anchoring Studs (standard)**

Nelson Type - specify stud size \_\_\_\_\_

MUST **SPECIFY TYPE** (BASED ON ROUGH OPENING SIZE)  
 AS PART OF MODEL NUMBER WHEN PLACING ORDER

ROUGH OPENING SIZES (WIDTH X HEIGHT)

Dimensions in Inches	WIDTH									
	6.3	8.3	10.3	12.3	14.3	16.3	18.3	20.3	22.3	
HEIGHT	6.3	A1	B1	C1	D1	E1	F1	G1	H1	J1
	8.3	A2	B2	C2	D2	E2	F2	G2	H2	J2
	10.3	A3	B3	C3	D3	E3	F3	G3	H3	J3
	12.3	A4	B4	C4	D4	E4	F4	G4	H4	J4
	14.3	A5	B5	C5	D5	E5	F5	G5	H5	J5
	16.3	A6	B6	C6	D6	E6	F6	G6	H6	J6
	18.3	A7	B7	C7	D7	E7	F7	G7	H7	J7
	20.3	A8	B8	C8	D8	E8	F8	G8	H8	J8
	22.3	A9	B9	C9	D9	E9	F9	G9	H9	J9

QTY	TYPE	ROUGH OPENING W" X H"		WALL DEPTH
27	C3	10.3	10.3	6"

**SUBMITTAL APPROVAL**

<b>Job Name and Location</b>			
<b>Engineer</b>	Date	<b>Factory</b>	Date
<b>Mfr. Rep.</b>	Date	<b>Submitted By</b>	Date

MARCH 2015  
 NEW CONSTRUCTION  
 S-VENT SECURITY PRODUCTS PAGE 3