

## MINIMUM SECURITY

### STANDARD FEATURES

- FACE PLATE: 12 GA C.R.S. with 13/16" square holes on 1" centers.
- DIFFUSER: with steel construction and reinforced welded corners. 4-way pattern is standard.
- NECK SIZES: square and rectangular from 6" x 6" to 24" x 24" in 3" increments
- FACE PLATE: furnished with screw holes to accept 1/4" - 20 x 2" tamperproof screws shipped loose. Check ceiling thickness to verify the length is sufficient.
- TAMPERPROOF SCREWS: 1/4" - 20 x 2" one-way vandal proof

### FINISH

- STANDARD: White Finish
- OPTIONAL: Consult factory for other finishes

### OPTIONAL FEATURES

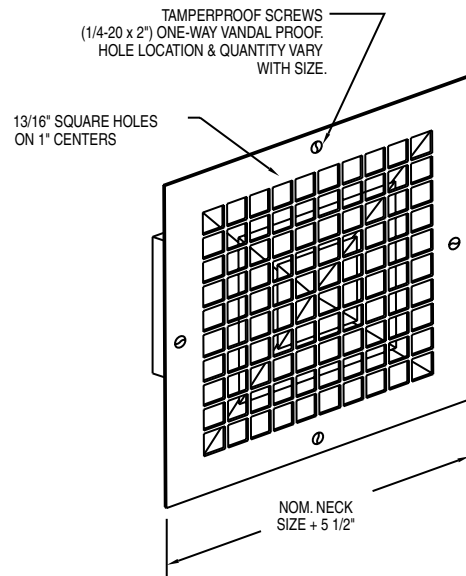
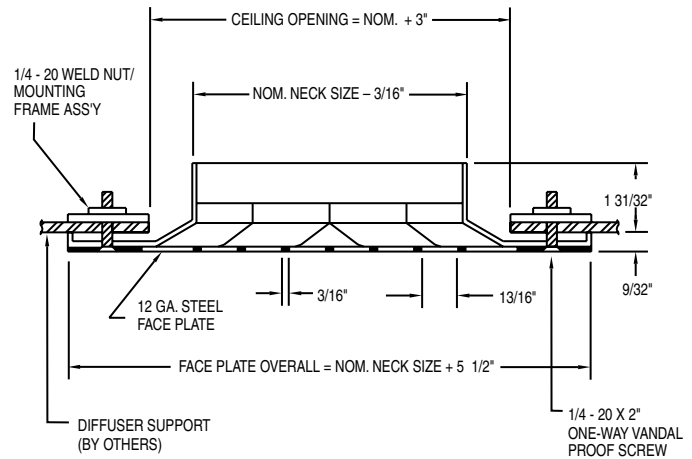
- MATERIAL GAUGE: face plate - 10 GA, 14 GA
- MATERIAL: Stainless Steel, Aluminum, or Galvanized (consult factory for availability)
- FACE PLATE PATTERNS:
  - 9/16" square holes on 11/16" centers
  - Consult factory for other face patterns
- OPPOSED BLADE DAMPER: adjustable from the room when the lattice and core are removed (shipped loose)
- TAMPERPROOF SCREWS: See inside back cover, page i, and consult factory for specific product applications
- EQUALIZING DEFLECTOR: Steel duct mounted
- CORE PATTERNS: 1-way, 2-way opposite, 2-WAY corner, 3-WAY, 4-WAY
- ADAPTER: square to round (shipped loose)

### CONSTRUCTION

The SGSDF is constructed of all steel components with reinforced welded seams. The heavy duty lattice face plate is removable (with a special tool) to allow access to volume control.

### INSTALLATION

The diffuser is connected to the duct work. The lattice face plate is secured to the diffuser face by the tamperproof screws that extend up into the diffuser support frame in the ceiling.



### CORE PATTERNS

	SQUARE	RECTANGULAR
<b>4 WAY PATTERNS (STANDARD)</b>	41	42
<b>1 WAY PATTERNS</b>	11	12
	13	
<b>2 WAY PATTERNS</b>	21	22
	23	
	25	26
<b>3 WAY PATTERNS</b>	27	
	31	32
	33	