

**APPLICATION**

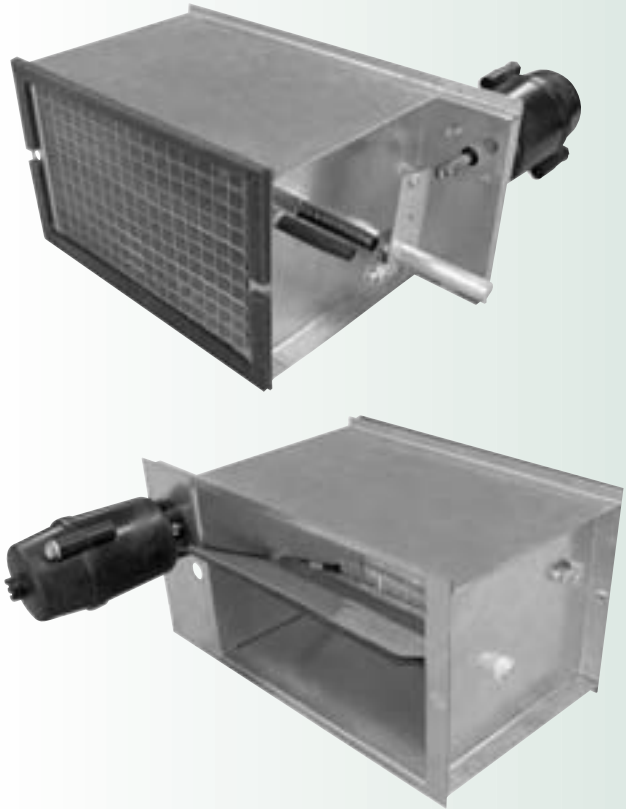
- Designed for retrofitting older generation of high pressure, mechanical constant volume air terminals, both single and dual duct, to save energy by reducing system pressure and mixing of hot and cold air
- Designed for retrofit of Anemostat and other manufacturer's air terminals
- RF-8 replaces existing box regulator, reducing the minimum operating static pressure requirement
- Replacement of the Anemostat existing MCV regulator with the RF-8 is easily accomplished in the field, typically within 60 minutes.
- Replacement in Anemostat terminals is accomplished thru the large, bottom access panel of the existing air terminal without disturbing inlet or discharge duct connections.
- The RF-8 is dimensionally the same as existing MCV regulators and normally bolts to the existing bulkhead without cutting sheet metal to fit

**PRODUCT FEATURES**

- The RF-8 regulator is available in 10 different sizes to fit all needs
- The RF-8 is a kit that includes all tubing, hardware, fittings, adaptors, and controls necessary to realize the energy saving advantage by reducing the air terminal operating pressure
- Multi-point averaging air flow sensor
- 20 gauge coated steel construction
- Rectangular damper rotates in self-lubricating bearings and provides high degree of open area – configurable for normally open or normally closed operation
- Neoprene perimeter damper seal provides tight closure for shut-off applications

**OPTIONS**

- Pressure independent Pneumatic, Electronic Analog, or Direct Digital Control Packages are available to suit project requirements.



RF-8 OPTIMUM AIR FLOW RANGES FOR MAXIMUM PRESSURE REDUCTION	
Size	CFM
04	255-75
08	540-160
12	805-240
18	1115-335
8T	1140-340
23	1530-455
28	1675-500
23L	2350-700
18T	2390-710
28T	3500-1120