

## APPLICATION

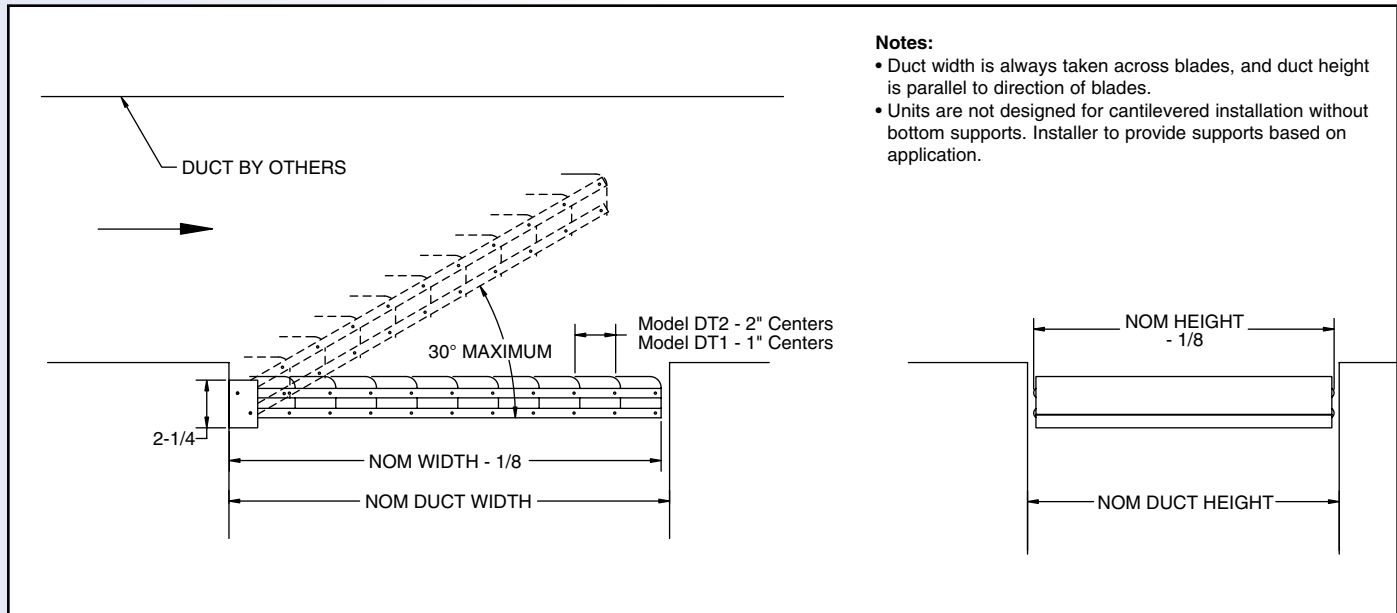
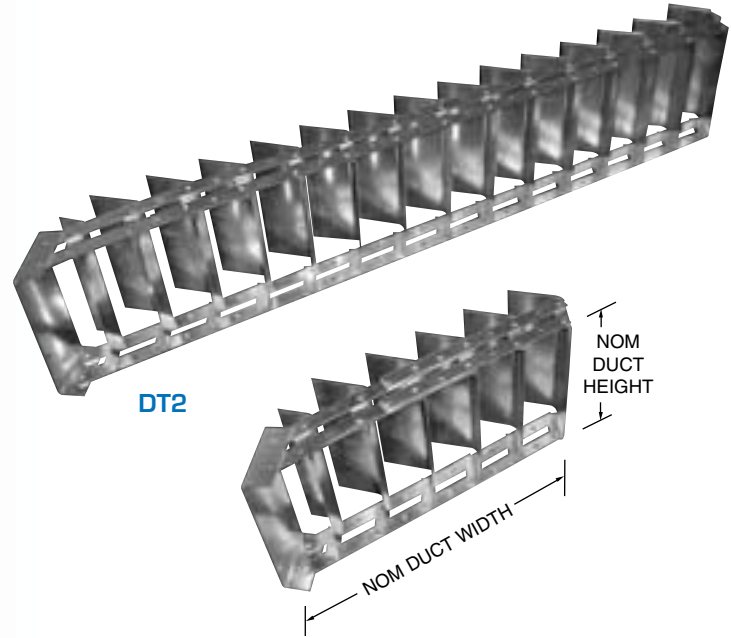
- Assists in air balancing by uniformly directing a regulated amount of air from a main duct into a branch take-off or into the neck of a grille
- Air scooping action of curved blades minimize pressure loss and turbulence at the take-off or grille

## PRODUCT FEATURES

- Zinc coated steel construction
- Curved blades on 1" or 2" centers
- Pivot action from full open to full closed where blades overlap each other
- Parallel blades are gang operated
- Blade assembly pivots on a base plate
- 4 mounting / adjustment configurations
- Sizes from nominal 4" long blades x 6" up to 36" long blades x 36".

## EXTRACTOR OPTIONS

- Aluminum construction



**Notes:**

- Duct width is always taken across blades, and duct height is parallel to direction of blades.
- Units are not designed for cantilevered installation without bottom supports. Installer to provide supports based on application.

