

PRODUCT FEATURES

- Fixed Louver Return
- Registers include a factory attached, opposed blade volume control damper

CONSTRUCTION DETAILS

Material:

- Steel Construction
- All Aluminum Construction

Finish:

- Arctic White (std)
- Custom Color (opt)

Models

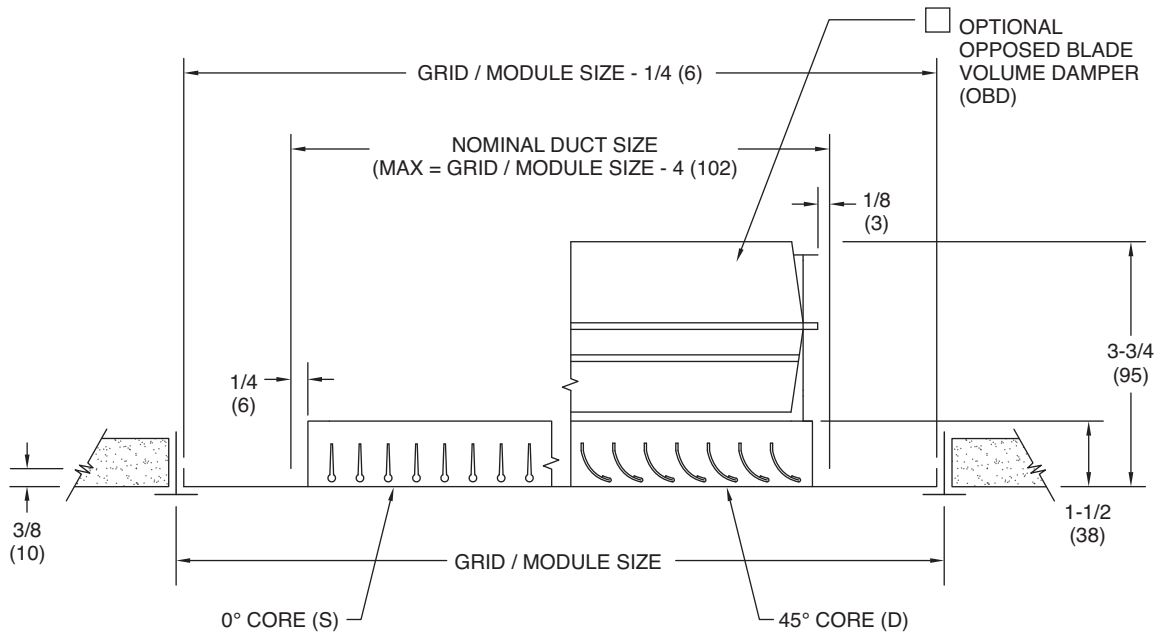
- 30-0-L** 0° Deflection
- 30-45-L** 45° Deflection

Extension Panel

- A** 06" x 30" Module
- B** 06" x 48" Module
- 11** 12" x 12" Module
- 12** 12" x 24" Module
- 22** 24" x 24" Module
- 24** 24" x 48" Module
- 30** 30" x 30" Module

Accessories

- OB** Opposed Blade Damper



GRID / MODULE SIZE	MAX NECK SIZE
12 x 12 (305 x 305)	8 x 8 (203 x 203)
12 x 24 (305 x 610)	8 x 20 (203 x 508)
24 x 24 (610 x 610)	20 x 20 (508 x 508)
24 x 48 (610 x 1219)	20 x 44 (508 x 1118)
48 x 48 (1219 x 1219)	44 x 44 (1118 x 1118)

NOTES:

- Louvers are parallel to longer neck dimension as standard.
- For Nominal Neck Size = Grid / Module Size -2 (51), use 30 surface mounted unit without screw holes in border.

All dimensions are in inches.

JOB NAME:

SUBMITTED BY: