

SUBMITTAL SHEET

www.anemostat-hvac.com

PRODUCT FEATURES

- Adjustable volume and pattern controllers
- Flush mounting

CONSTRUCTION FEATURES

- Material:**
Extruded aluminum
- Finish:**
- Arctic White
(Black Pattern/Volume Controllers)
 - Natural Anodize
(Black Pattern/Volume Controllers)
 - Custom Color : _____

SUPPLY MODELS

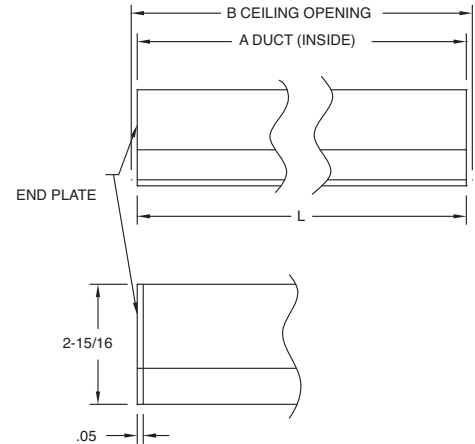
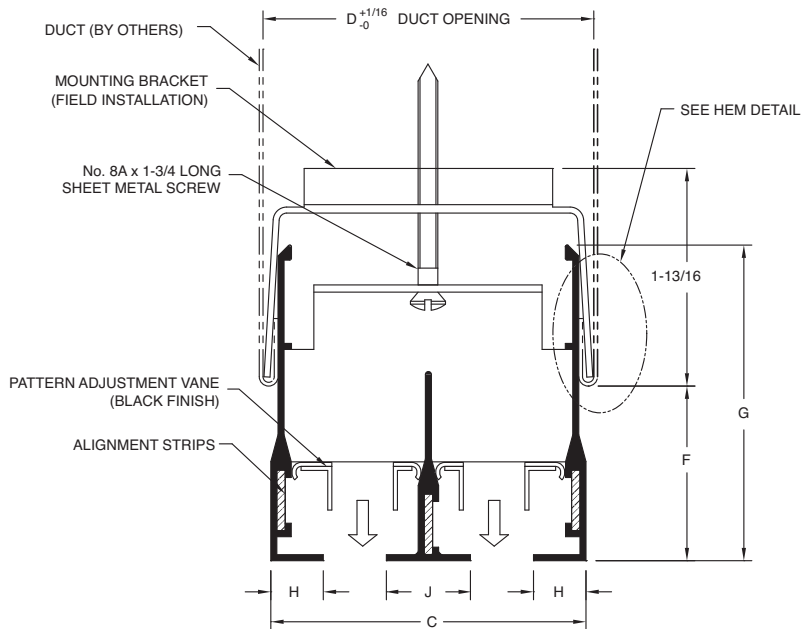
- PJ-W-100** 1" Slot Width (1-4 slots)
- PJ-W-150** 1-1/2" Slot Width (1-4 slots)

RETURN MODELS (No Internal Controllers)

- PJR-W-100** 1" Slot Width (1-4 slots)
- PJR-W-150** 1-1/2" Slot Width (1-4 slots)

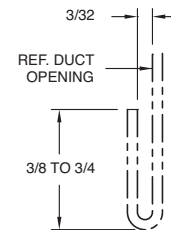
OPTIONS

- LEC** Linear Egg Crate
- LED** Linear Equalizing Deflector

2 SLOT SHOWN


"L"-NOMINAL LENGTH
(24,36,48 AND 60)
 "A"-LENGTH OF DUCT
(NOMINAL LENGTH + 3/32)
 "B"-LENGTH OF CEILING OPENING
(NOMINAL LENGTH + 1/8)

DIFFUSER SIZE	PJ-W-100 1" SLOT WIDTH						PJ-W-150 1-1/2" SLOT WIDTH						
	C	D	F	G	H	J	C	D	F	G	H	J	
1	2-3/16	2-3/8	2 TO 2-3/4	3-9/32	19/32	1	-	3-3/16	3-5/16	2-7/8 TO 3-5/8	4-5/32	27/32	-
2	4-3/16	4-3/8					6-3/16	6-5/16					
3	6-3/16	6-3/8					9-3/16	9-5/16					
4	8-3/16	8-3/8					12-3/16	12-5/16					



HEM DETAIL
 Duct must be hemmed
 as shown (On sides only)

All dimensions are in inches.

JOB NAME:
SUBMITTED BY: