

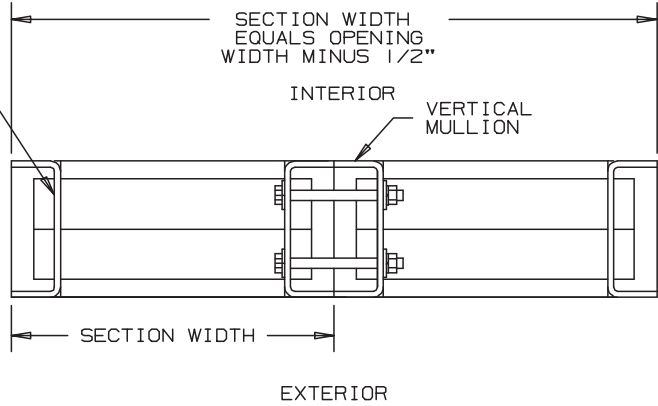
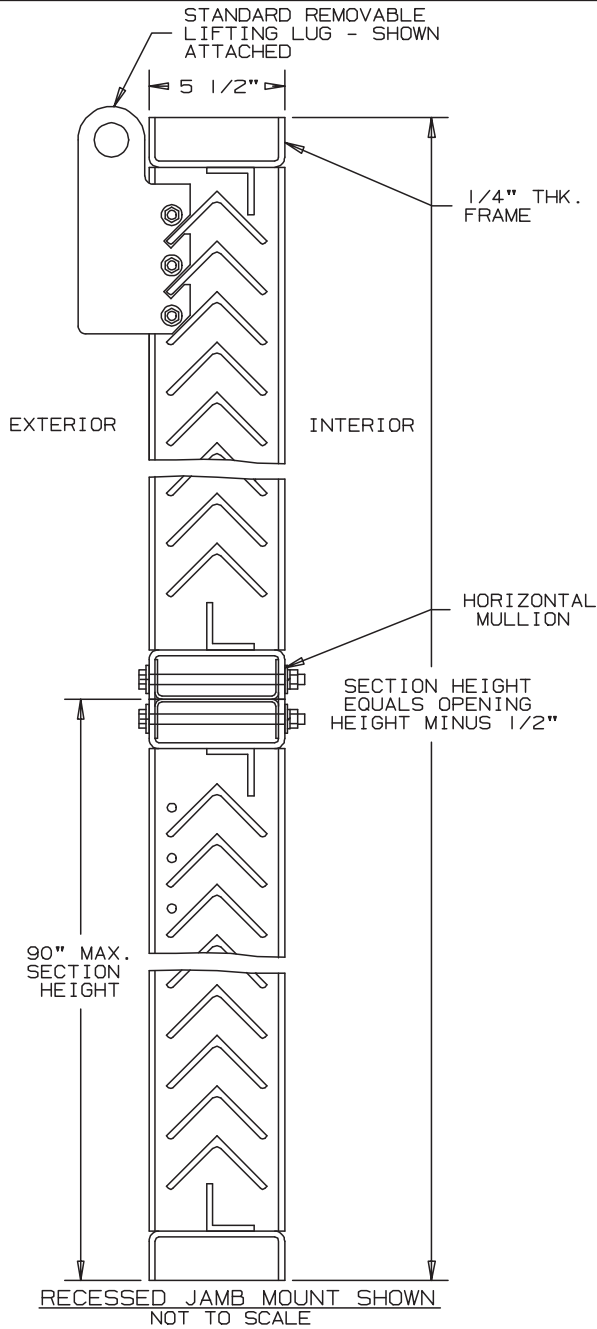


Anemostat®

AIR DISTRIBUTION

MODEL **SLUF5**

FEMA 361 ALUMINUM LOUVER
5-1/2" DEEP



SPECIFICATIONS

- FRAME: 1/4" ALUMINUM PLATE
- BLADES: 3"x3"x 1/4" STRUCTURAL ALUMINUM ANGLE
- SCREEN: 1/2"x16 GAUGE EXPANDED ALUMINUM - LOCATED ON INTERIOR
- MAXIMUM PANEL SIZE: 90"x90" CONTINUOUS WIDE
78"x90" CONTINUOUS HIGH
- MINIMUM PANEL SIZE: 12"x12"
- PSF RATING: 266 PSF DESIGN LOAD
- WEIGHT PER SQ. FT.: 15 POUNDS SQ./FT.
- TEST METHODS: ICC 500, FEMA 361, ASTM E330, ASTM 1886
- FREE AREA: 49.3% (7.89 SQ./FT.), FOR 48" x 48" SIZE.

TEST METHOD(S):
 ICC 500-2008, STANDARD FOR THE DESIGN AND CONSTRUCTION OF STORM SHELTERS.
 FEMA 361 2ND EDITION, SECTION 7 DEBRIS IMPACT PERFORMANCE CRITERIA FOR SAFE ROOMS.
 ASTM E 330-02, TEST METHOD FOR STRUCTURAL PERFORMANCE OF WINDOWS, CURTAIN WALLS AND DOORS BY UNIFORM STATIC AIR PRESSURE DIFFERENCE.
 ASTM E 1886-05, STANDARD TEST METHOD FOR PERFORMANCE OF EXTERIOR WINDOWS, CURTAIN WALLS, DOORS AND IMPACT PROTECTIVE SYSTEMS IMPACTED BY MISSILE(S) AND EXPOSED TO CYCLIC PRESSURE DIFFERENTIALS.

NOMINAL DEDUCTIONS WILL BE MADE TO THE OPENING SIZE GIVEN.

ITEM	QTY.	OPENING SIZE		LOUVER SIZE		MULL	SCREENS		UNION MADE
		WIDTH	HEIGHT	WIDTH	HEIGHT		TYPE	LOC	

Anemostat Air Distribution
 1220 E. Watson Center Road
 Carson, CA 90745
 310-835-7500 • air@anemostat.com
 www.anemostat-hvac.com

ARCH./ENG. : _____

CONTR. : _____

PROJECT : _____

EDR: _____ ECN: _____ JOB: _____

DATE: _____ DWN. : _____ DWG. : _____

AGENT : _____

MODEL SLUF5

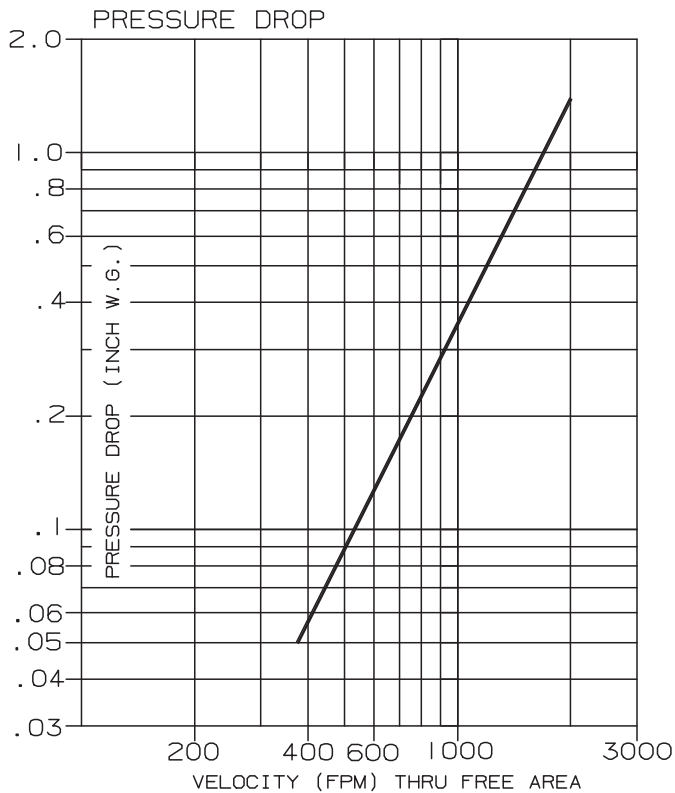
361 FEMA LOUVERS

ALUMINUM - STATIONARY

PERFORMANCE DATA

FREE AREA

		FREE AREA (SQ. FT.)								
		WIDTH								
HEIGHT		12"	24"	36"	48"	60"	72"	78"	84"	90"
		12"		.23	.79	1.34	1.88	2.44	2.99	3.26
24"		.47	1.63	2.76	3.88	5.05	6.18	6.74	7.30	7.68
36"		.71	2.48	4.18	5.89	7.66	9.36	10.22	11.07	11.65
48"		.95	3.32	5.61	7.89	10.26	12.55	13.69	14.84	15.61
60"		1.19	4.16	7.03	9.90	12.87	15.74	17.17	18.61	19.58
72"		1.43	5.01	8.46	11.90	15.48	18.93	20.65	22.37	23.54
78"		1.56	5.43	9.17	12.91	16.78	20.52	22.39	26.14	27.51
84"		1.68	5.85	9.88	13.91	18.08	22.11	24.13	28.03	27.51
90"		1.80	6.27	10.59	14.91	19.39	23.71	25.86	27.16	29.49



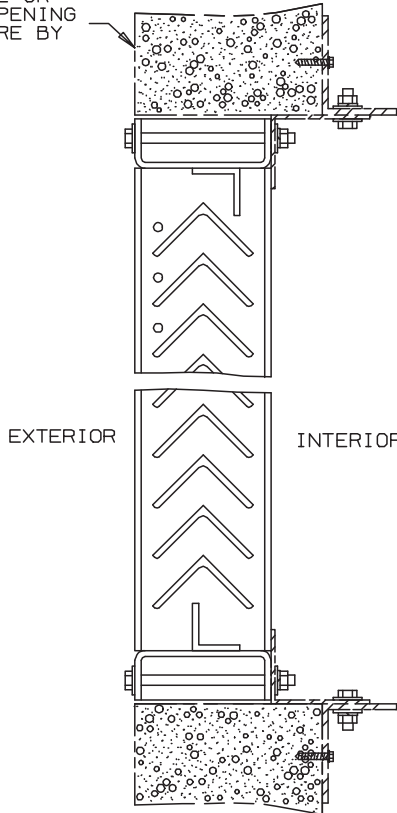
FASTENER SCHEDULE			
ANCHOR TYPE	SUBSTRATE	MINIMUM EMBEDMENT	MINIMUM EDGE DIST.
(1) 1/2"x3" RED HEAD LDT	CMU	2 1/2"	3 1/4"
(1) 1/2"x3" RED HEAD LDT	CONCRETE	2 1/2"	3 1/4"
(2) 2"x1/2" GRADE 5 BOLT	STEEL	FULL	3/4"

(1) CONCRETE SCREWS SHALL BE RED HEAD LDT ZINC COATED CONCRETE SCREWS
(2) BOLTS SHALL BE A MINIMUM GRADE 5

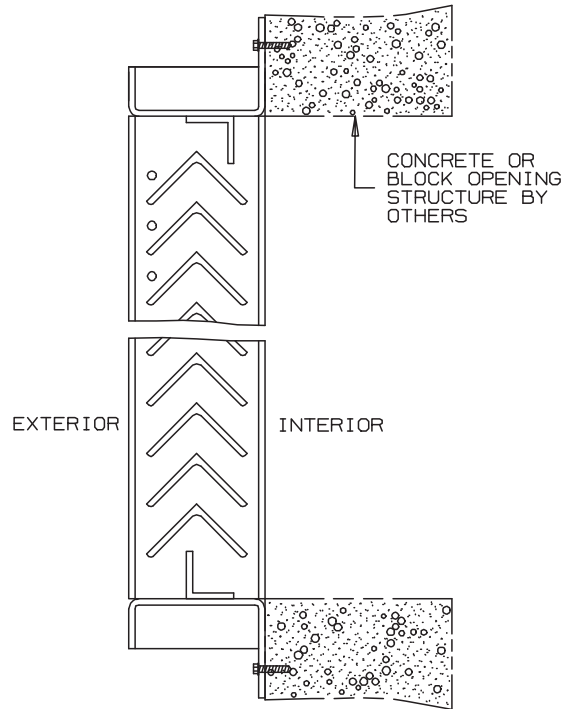
STANDARD AIR- .075 LBS PER CU FT
RATINGS DO NOT INCLUDE THE EFFECT OF A WIRE BIRD SCREEN
TESTS BASED ON A 48"x48" TEST SIZE.

MODEL SLUF5 MOUNTING DETAILS

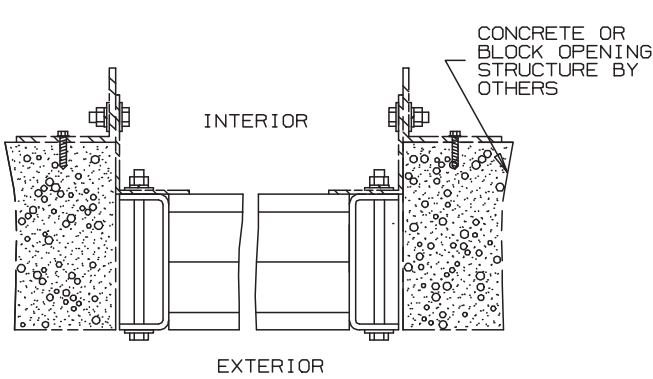
CONCRETE OR
BLOCK OPENING
STRUCTURE BY
OTHERS



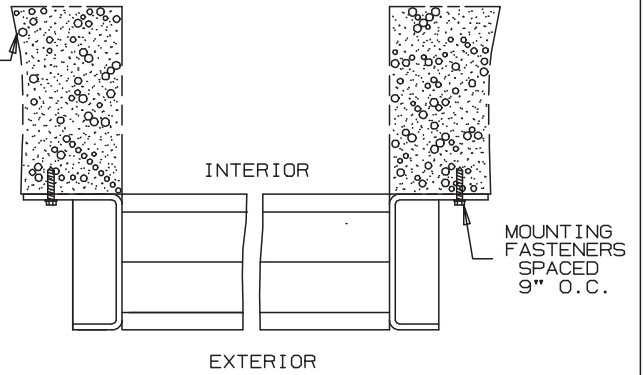
SLUF5 VERTICAL
SECTION VIEW
RECESSED MOUNT IN OPENING



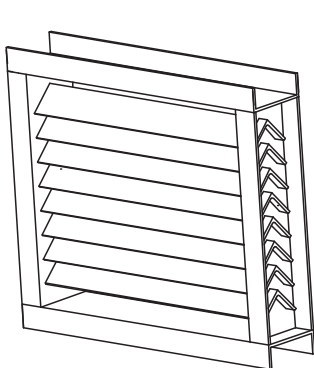
SLUF5 VERTICAL
SECTION VIEW
FLUSH MOUNT HEAD & SILL
ON OPENING



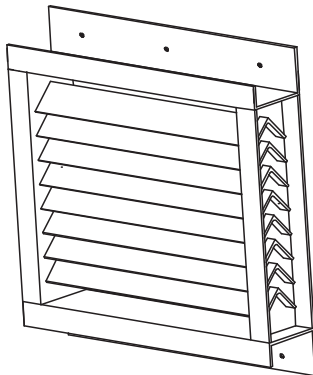
SLUF5 HORIZONTAL
SECTION VIEW
RECESSED MOUNT IN OPENING



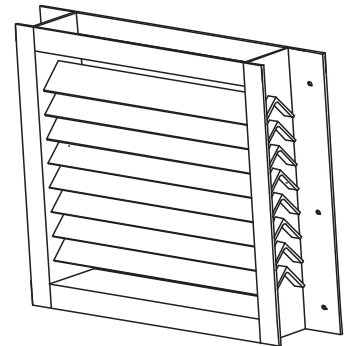
SLUF5 HORIZONTAL
SECTION VIEW
FLUSH MOUNT JAMBS
ON OPENING



RECESSED MOUNT:
CHANNEL FRAME



FLUSH MOUNT:
HEAD & SILL



FLUSH MOUNT:
JAMBS