

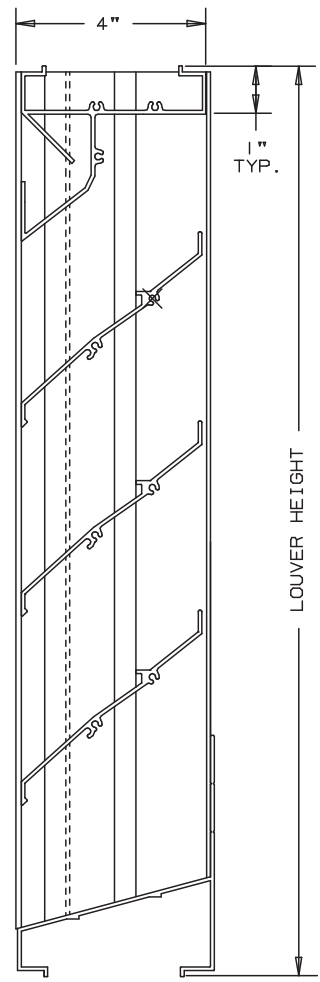


Anemostat®
AIR DISTRIBUTION

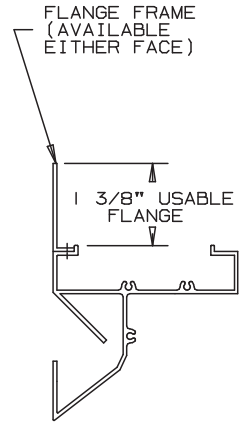
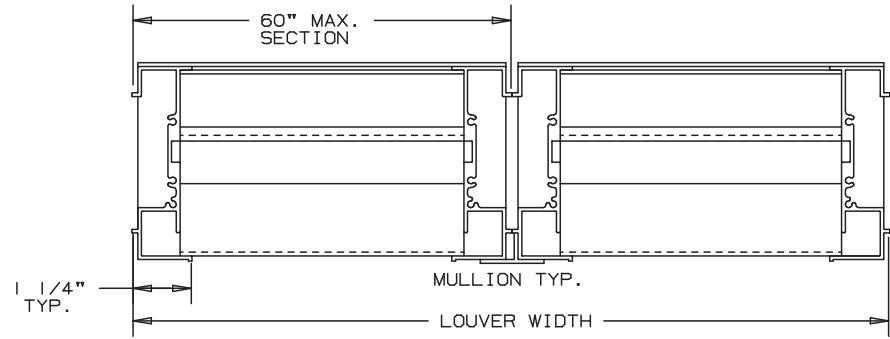
MODEL **SL40B**

EXTRUDED ALUMINUM LOUVERS
4" DEEP

45° BAFFLE BLADE-STATIONARY-CHANNEL TYPE



NOT TO SCALE



SPECIFICATIONS

MATERIAL: EXTRUDED ALUMINUM 6063-T6/T52 ALLOY
AVAILABLE IN .081" THK. AND
.125" THK. (NOMINAL).
FACE OF LOUVER: FULL WIDTH SILL WITH HEAD AND
BLADES CONTAINED WITHIN JAMBS.
APPROXIMATE BLADE CENTERS 4".
SCREEN: (WHEN INDICATED, IN A REMOVABLE FRAME)
BIRD SCREEN - 1/2" FLATTENED ALUMINUM, .051" THK.
OR - 1/2" SQ. MESH INTERMEDIATE DOUBLE-
CRIMPED ALUMINUM WIRE, .063" DIA.
OR - 18/16 MESH, .011" DIA. ALUMINUM
WIRE INSECT SCREEN.
FINISH: _____
MINIMUM PANEL SIZE: 12" x 12"
MAXIMUM SINGLE PANEL SIZE: 60" x 96"

LOUVER PERFORMANCE STATEMENT

LOUVER MODEL SL40B SHALL BE FABRICATED TO PROVIDE
A MINIMUM OF (56%), 9.02 SQUARE FEET OF FREE AREA FOR
A 48" x 48" SIZE LOUVER AND BEAR THE AMCA CERTIFIED
RATINGS PROGRAM SEAL FOR AIR PERFORMANCE AND WATER
PENETRATION. THE RATING SHALL SHOW A BEGINNING
POINT OF WATER PENETRATION AT .01 OUNCES PER SQUARE
FOOT OF FREE AREA AT A FREE AREA VELOCITY OF 932
FEET PER MINUTE, (8407) CUBIC FEET PER MINUTE. WITH
.125 INCHES WATER GAUGE PRESSURE DROP FOR AIR INTAKE.

NOMINAL DEDUCTIONS WILL BE MADE TO THE OPENING SIZE GIVEN.

ITEM	QTY.	WIDTH	HEIGHT	WIDTH	HEIGHT	MULL	TYPE	LOC	 UNION MADE			
		OPENING SIZE		LOUVER SIZE			SCREENS					

Anemostat Air Distribution
1220 E. Watson Center Road
Carson, CA 90745
310-835-7500 • air@anemostat.com
www.anemostat-hvac.com

AGENT: _____

ARCH. / ENG. :
CONTR. :
PROJECT :
EDR: ECN: JOB:
DATE: DWN. : DWG. :

MODEL SL40B

45° BAFFLE BLADE

EXTRUDED ALUMINUM - STATIONARY

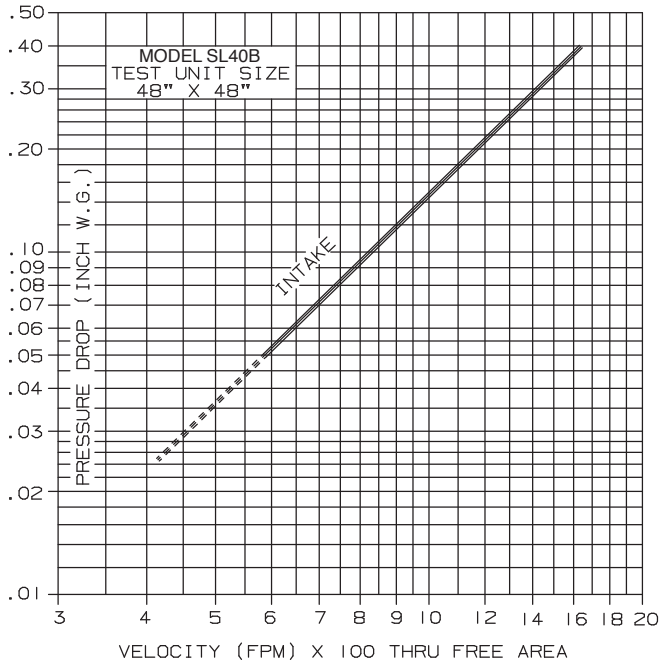
PERFORMANCE DATA

EXCELLENT WEATHER PROTECTION WITH LITTLE PRESSURE LOSS.

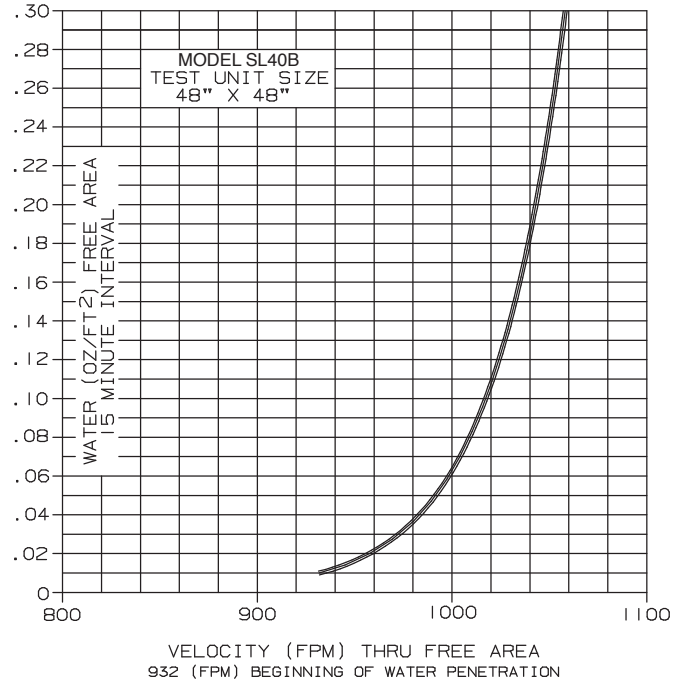
TESTS OF A 48" X 48" SAMPLE BY AN AMCA ACCREDITED LABORATORY ACCORDING TO AMCA STANDARD 500 SHOWS LOW WATER PENETRATION. TESTS SHOW LESS THAN .02 OZ. PER SQ. FT. WATER PENETRATION AT 950 FPM (FREE AREA VELOCITY) WITH LESS THAN .14" W.G. PRESSURE DROP (INTAKE).

RATINGS DO NOT INCLUDE THE EFFECT OF BIRDSCREEN.

PRESSURE DROP



WATER PENETRATION



FREE AREA

HEIGHT	FREE AREA (SQ. FT.)								
	WIDTH								
	12"	18"	24"	30"	36"	42"	48"	54"	60"
12"	.31	.50	.70	.89	1.09	1.28	1.48	1.67	1.87
24"	.82	1.34	1.86	2.38	2.90	3.42	3.94	4.46	4.98
36"	1.34	2.18	3.03	3.87	4.71	5.56	6.40	7.25	8.09
48"	1.85	3.02	4.19	5.36	6.53	7.70	9.02	10.04	11.20
60"	2.37	3.86	5.35	6.85	8.34	9.84	11.33	12.82	14.32
72"	2.88	4.70	6.52	8.34	10.16	11.97	13.79	15.61	17.43
84"	3.39	5.54	7.68	9.83	11.97	14.11	16.26	18.40	20.54
96"	3.91	6.38	8.85	11.31	13.78	16.25	18.72	21.19	23.66



Anemostat certifies that the performance data shown has been determined by test in accordance with applicable AMCA standards.

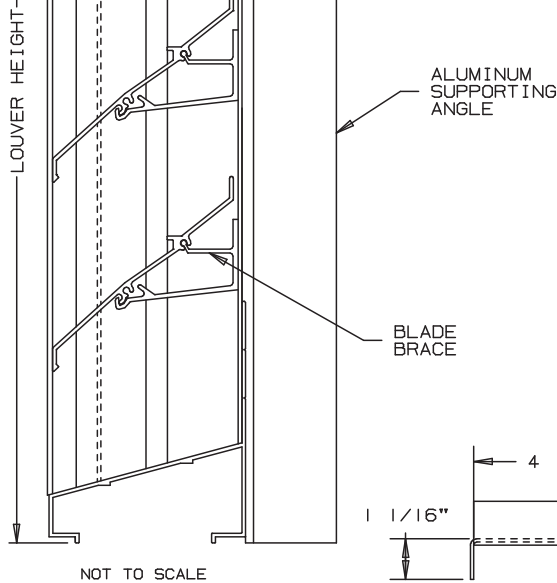
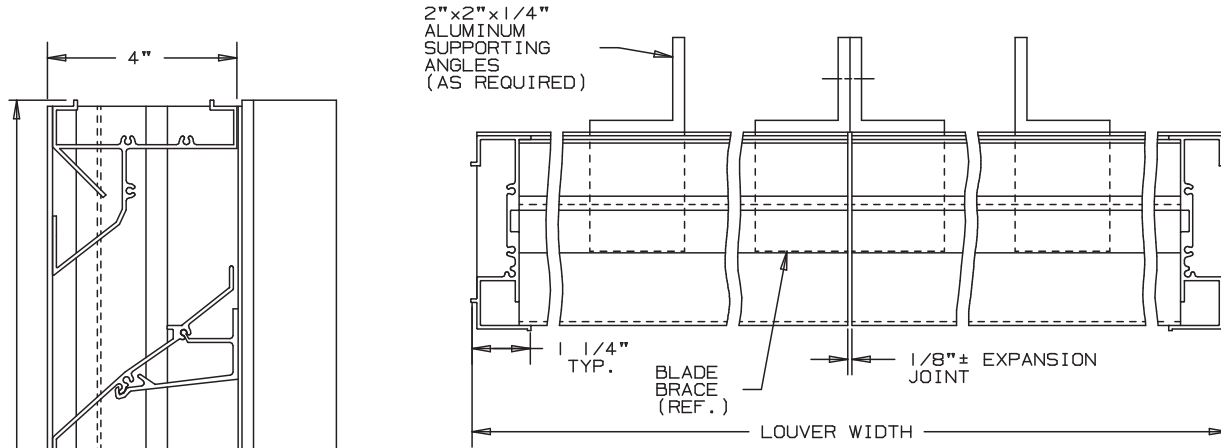


Anemostat®
AIR DISTRIBUTION

MODEL **SL40B**

EXTRUDED ALUMINUM LOUVERS
CONTINUOUS LINE

45° BAFFLE BLADE-STATIONARY-CHANNEL TYPE



SPECIFICATIONS

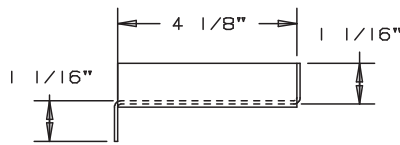
MATERIAL: EXTRUDED ALUMINUM 6063-T6/T52 ALLOY AVAILABLE IN .081" THK. AND .125" THK. (NOMINAL).

FACE OF LOUVER: FULL WIDTH SILL WITH HEAD AND BLADES CONTAINED WITHIN JAMBS. APPROXIMATE BLADE CENTERS 4".

SCREEN: (WHEN INDICATED, IN A REMOVABLE FRAME)
 BIRD SCREEN - 1/2" FLATTENED ALUMINUM, .051" THK.
 OR - 1/2" SQ. MESH INTERMEDIATE DOUBLE-CRIMPED ALUMINUM WIRE, .063" DIA.
 OR - 18/16 MESH, .011" DIA. ALUMINUM WIRE INSECT SCREEN.

FINISH: _____

LOUVERS SHALL WITHSTAND A WIND LOAD OF 20 PSF. CONSULT FACTORY TO SUBSTITUTE OTHER LOAD REQUIREMENTS.



DRAIN PAN DETAIL

* A DRAIN PAN WILL BE PROVIDED FOR HIDDEN MULLION ARCHITECTURAL CONSTRUCTION FOR MULTI-SECTIONS IN WIDTH (AS SHOWN ABOVE)

NOMINAL DEDUCTIONS WILL BE MADE TO THE OPENING SIZE GIVEN.

										 UNION MADE
ITEM	QTY.	WIDTH	HEIGHT	WIDTH	HEIGHT	MULL	TYPE	LOC	SCREENS	
		OPENING SIZE		LOUVER SIZE						

Anemostat Air Distribution
 1220 E. Watson Center Road
 Carson, CA 90745
 310-835-7500 • air@anemostat.com
 www.anemostat-hvac.com

AGENT: _____

ARCH./ENG.:
CONTR.:
PROJECT:
EDR: ECN: JOB:
DATE: DWN.: DWG.: