

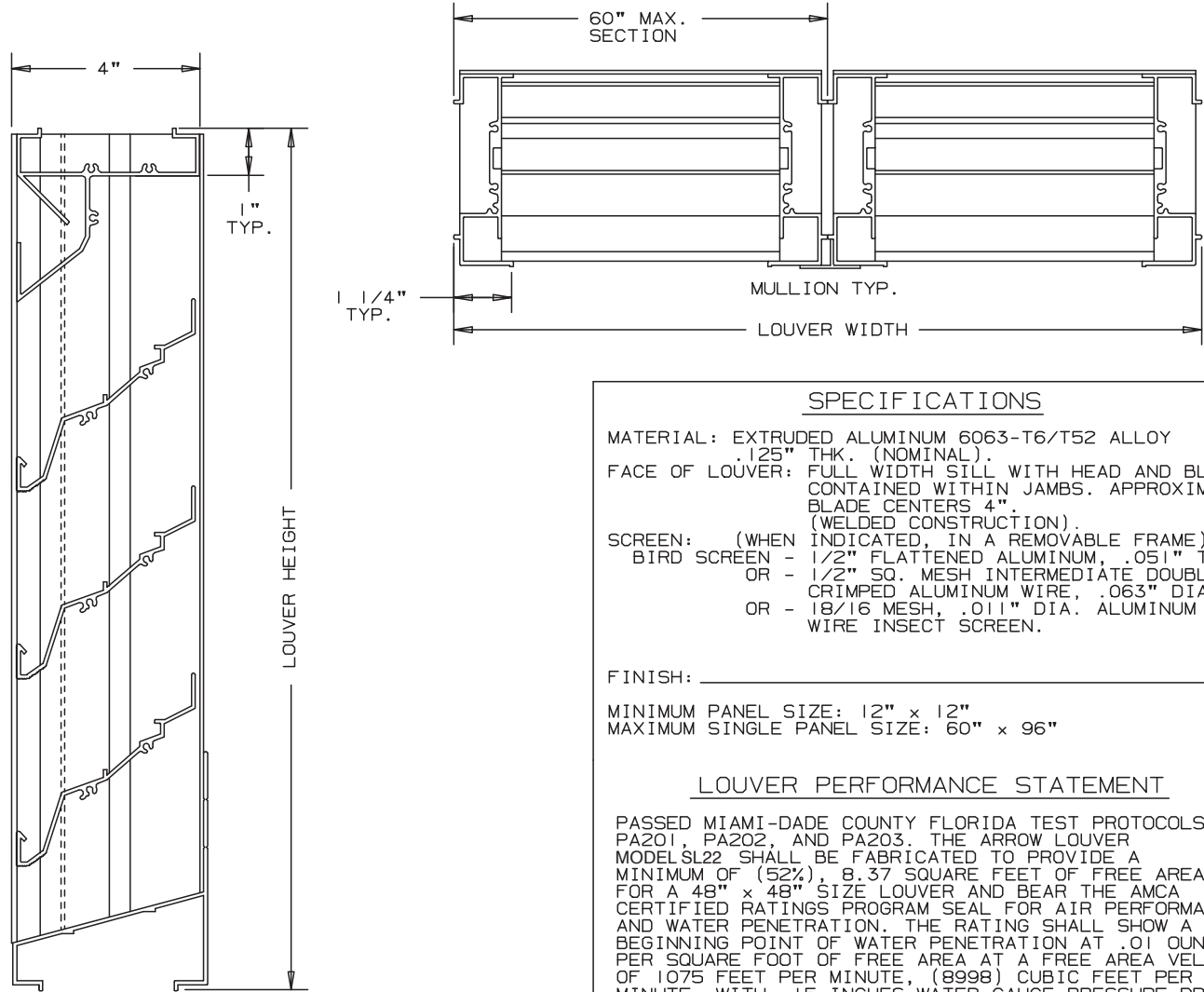


Anemostat®
AIR DISTRIBUTION

MODEL **SL22**

EXTRUDED ALUMINUM LOUVERS
4" DEEP

45° DUAL DRAIN BLADE-STATIONARY-CHANNEL TYPE
WITHSTANDS DESIGN PRESSURES UP TO 150± P.S.F.



NOT TO SCALE

SPECIFICATIONS

MATERIAL: EXTRUDED ALUMINUM 6063-T6/T52 ALLOY
.125" THK. (NOMINAL).
FACE OF LOUVER: FULL WIDTH SILL WITH HEAD AND BLADES
CONTAINED WITHIN JAMBS. APPROXIMATE
BLADE CENTERS 4".
(WELDED CONSTRUCTION).
SCREEN: (WHEN INDICATED, IN A REMOVABLE FRAME)
BIRD SCREEN - 1/2" FLATTENED ALUMINUM, .051" THK.
OR - 1/2" SQ. MESH INTERMEDIATE DOUBLE-
CRIMPED ALUMINUM WIRE, .063" DIA.
OR - 18/16 MESH, .011" DIA. ALUMINUM
WIRE INSECT SCREEN.

FINISH: _____

MINIMUM PANEL SIZE: 12" x 12"
MAXIMUM SINGLE PANEL SIZE: 60" x 96"

LOUVER PERFORMANCE STATEMENT

PASSED MIAMI-DADE COUNTY FLORIDA TEST PROTOCOLS
PA201, PA202, AND PA203. THE ARROW LOUVER
MODEL SL22 SHALL BE FABRICATED TO PROVIDE A
MINIMUM OF (52%), 8.37 SQUARE FEET OF FREE AREA
FOR A 48" x 48" SIZE LOUVER AND BEAR THE AMCA
CERTIFIED RATINGS PROGRAM SEAL FOR AIR PERFORMANCE
AND WATER PENETRATION. THE RATING SHALL SHOW A
BEGINNING POINT OF WATER PENETRATION AT .01 OUNCES
PER SQUARE FOOT OF FREE AREA AT A FREE AREA VELOCITY
OF 1075 FEET PER MINUTE, (8998) CUBIC FEET PER
MINUTE. WITH .15 INCHES WATER GAUGE PRESSURE DROP
FOR AIR INTAKE.

NOMINAL DEDUCTIONS WILL BE MADE TO OPENING SIZES GIVEN.

ITEM	QTY.	WIDTH	HEIGHT	WIDTH	HEIGHT	MULL	TYPE	LOC	SCREENS	 UNION MADE
		OPENING SIZE		LOUVER SIZE						

Anemostat Air Distribution
1220 E. Watson Center Road
Carson, CA 90745
310-835-7500 • air@anemostat.com
www.anemostat-hvac.com

AGENT: _____

ARCH./ENG. : _____
CONTR. : _____
PROJECT : _____
EDR: _____ ECN: _____ JOB: _____
DATE: _____ DWN. : _____ DWG. : _____

MODEL SL22

45° DRAIN BLADE

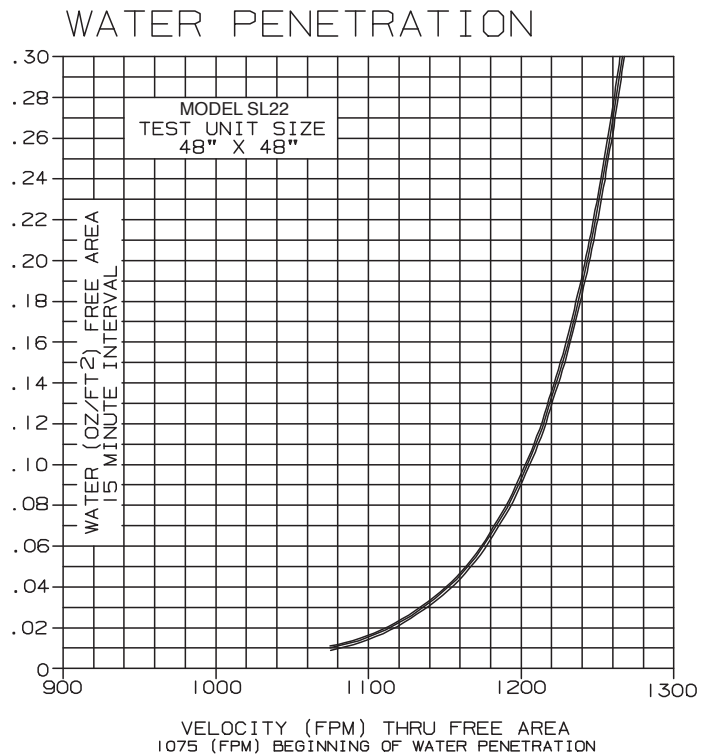
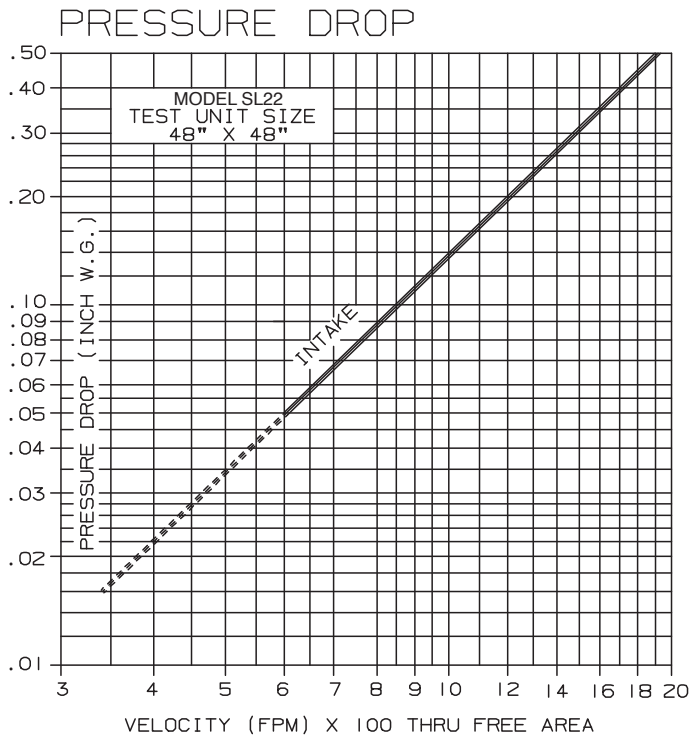
EXTRUDED ALUMINUM - STATIONARY

PERFORMANCE DATA

EXCELLENT WEATHER PROTECTION WITH LITTLE PRESSURE LOSS.

TESTS OF A 48" X 48" SAMPLE ACCORDING TO AMCA STANDARD 500-L SHOWS LOW WATER PENETRATION. TESTS SHOW LESS THAN .02 OZ. PER SQ. FT. WATER PENETRATION AT 1100 FPM (FREE AREA VELOCITY) WITH LESS THAN .17 W.G. PRESSURE DROP (INTAKE).

RATINGS DO NOT INCLUDE THE EFFECT OF BIRDSCREEN.



FREE AREA

HEIGHT	FREE AREA (SQ. FT.)								
	WIDTH								
	12"	18"	24"	30"	36"	42"	48"	54"	60"
12"	.31	.50	.70	.90	1.09	1.29	1.48	1.68	1.87
24"	.81	1.31	1.82	2.33	2.84	3.35	3.86	4.36	4.87
36"	1.30	2.12	2.94	3.77	4.59	5.41	6.23	7.05	7.87
48"	1.80	2.93	4.07	5.20	6.34	7.47	8.37	9.74	10.87
60"	2.29	3.74	5.19	6.64	8.08	9.53	10.98	12.43	13.88
72"	2.79	4.55	6.31	8.07	9.83	11.59	13.35	15.12	16.88
84"	3.28	5.36	7.43	9.51	11.58	13.65	15.73	17.80	19.88
96"	3.78	6.17	8.55	10.94	13.33	15.72	18.10	20.49	22.88



WATER
PENETRATION

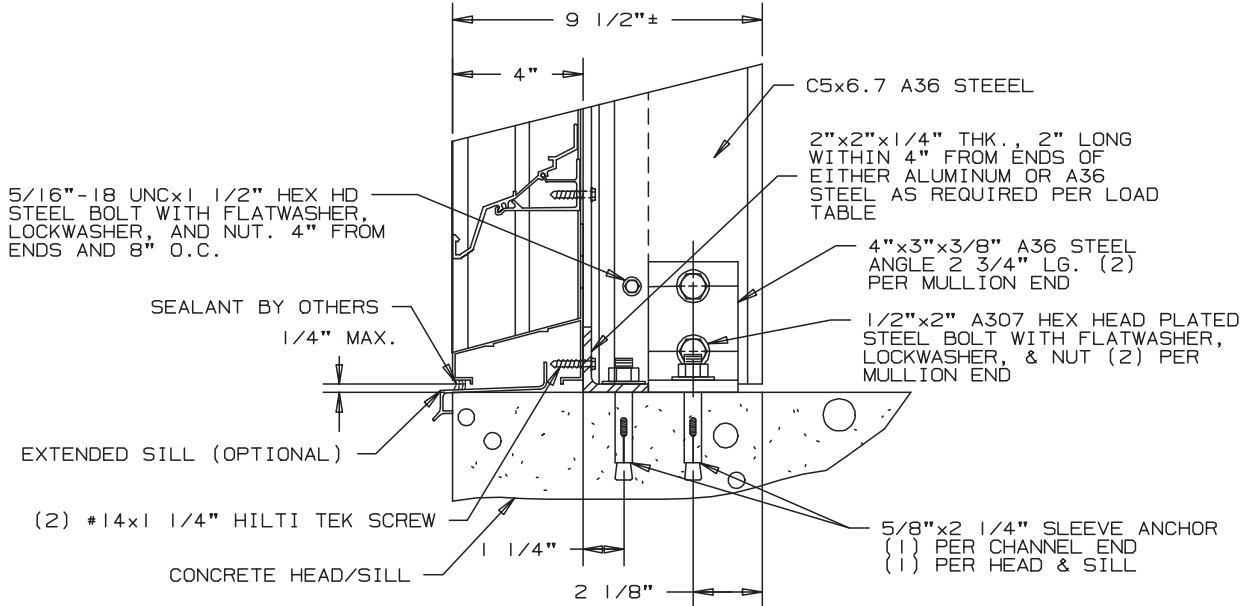


AIR
PERFORMANCE

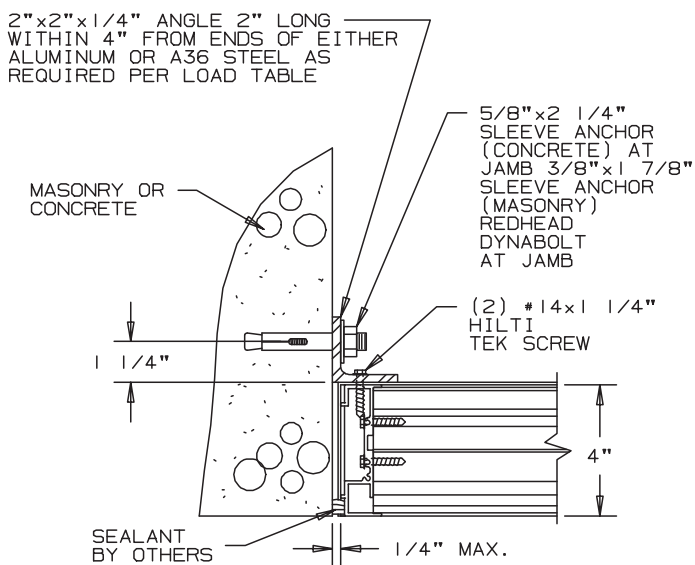
Anemostat certifies that the performance data shown has been determined by test in accordance with applicable AMCA standards.



HEAD/SILL DETAIL



JAMB DETAIL



VISIBLE VERTICAL MULLION DETAIL

