

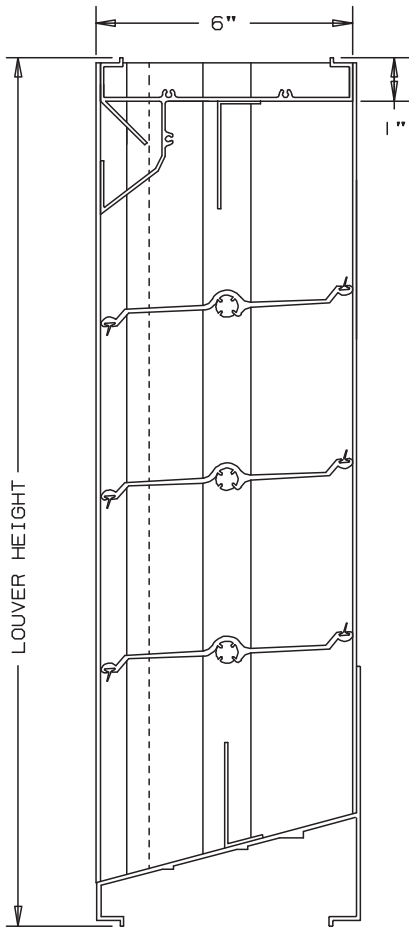


Anemostat®
AIR DISTRIBUTION

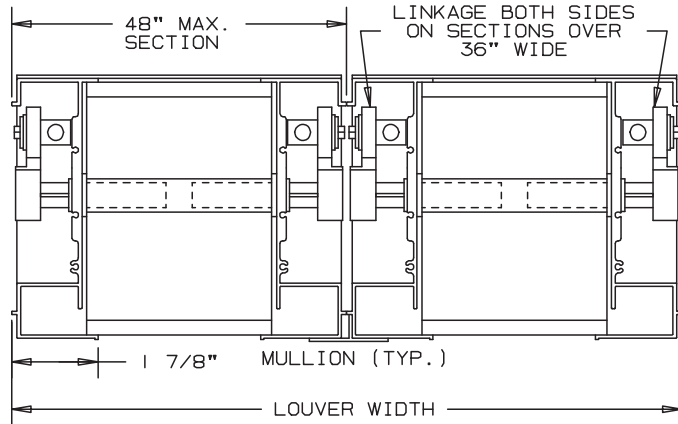
MODEL **LA444-70**

EXTRUDED ALUMINUM LOUVERS
ADJUSTABLE TYPE 6" DEEP

FOR MANUAL OR MOTOR OPERATION



NOT TO SCALE



SPECIFICATIONS

BEARINGS: CELCON BEARING MATERIAL SO THAT THERE WILL BE NO METAL TO METAL FRICTION. OPERATING LINKAGE CONCEALED IN FRAME, OUT OF THE AIR STREAM.

MATERIAL: FRAME AND BLADE EXTRUDED ALUMINUM 6063-T6/T52 ALLOY .080" THK., BLADES ON 4" CENTERS.

FACE OF LOUVER: FULL WIDTH SILL WITH DRAIN HEAD AND NON-DRAIN BLADES CONTAINED WITHIN THE DRAIN JAMBS.

LINKAGE: EXTRUDED ALUMINUM, CONCEALED IN CHANNEL OUT OF AIRSTREAM. PIVOTS ARE .50" DIA. MACHINED STEEL, CADMIUM PLATED AND CHROMATE TREATED. PIVOTS ROTATE IN A CELCON BEARING. A .312" DIA. ALUMINUM LINKAGE ROD IS LOCKED TO THE PIVOT BY A 1/4-20 SET SCREW WITH AN EPOXY LOCKING PATCH.

SHAFTS: .50" DIA. ALUMINUM "PIN-LOCK" ROD.

SEALS: EXTRUDED SILICONE RUBBER SEAL AT BLADE EDGE. POLYURETHANE AT THE JAMBS.

SCREENS: WHEN INDICATED, IN A REMOVABLE FRAME.

- BIRD SCREEN - 1/2" FLATTENED ALUMINUM, .051" THK.
- OR - 1/2" SQ. MESH, INTERMEDIATE DOUBLE-CRIMPED ALUMINUM WIRE, .063 DIA.
- OR - 18/16 MESH, .011" DIA. ALUMINUM WIRE, INSECT SCREEN.

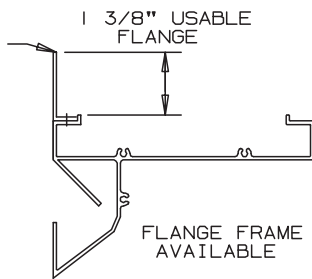
FINISH: MILL.

LOUVER SIZES: 12" x 12" MINIMUM PANEL SIZE.
48" x 96" MAXIMUM PANEL SIZE.

LOUVER PERFORMANCE STATEMENT

LOUVER MODEL LA444-70 SHALL BE FABRICATED TO PROVIDE A MINIMUM OF (67%), 10.71 SQUARE FEET OF FREE AREA FOR A 48" x 48" SIZE LOUVER. TESTED IN ACCORDANCE TO AMCA STANDARD 500-L-99. THE BEGINNING POINT OF WATER PENETRATION AT .01 OUNCES PER SQUARE FOOT OF FREE AREA AT A FREE AREA VELOCITY OF 681 FEET PER MINUTE, (7294) CUBIC FEET PER MINUTE. WITH A .14 INCHES WATER GAUGE PRESSURE DROP AT 1000 FPM FOR AIR INTAKE.

FLANGE FRAME (AVAILABLE EITHER FACE)



OPTIONAL

- * OTHER SCREENS
- * ARCHITECTURAL FINISHES
- * ACTUATORS (ELECTRIC, PNEUMATIC, MANUAL, ETC.)

NOMINAL DEDUCTIONS WILL BE MADE TO THE OPENING SIZES GIVEN.

ITEM	QTY.	OPENING SIZE		LOUVER SIZE		MULL	SCREENS	
		WIDTH	HEIGHT	WIDTH	HEIGHT		TYPE	LOC



Anemostat Air Distribution
1220 E. Watson Center Road
Carson, CA 90745
310-835-7500 • air@anemostat.com
www.anemostat-hvac.com

ARCH./ENG. : _____

CONTR. : _____

PROJECT : _____

EDR: _____ ECN: _____ JOB: _____

DATE: _____ DWN. : _____ DWG. : _____

AGENT : _____

MODEL LA444-70

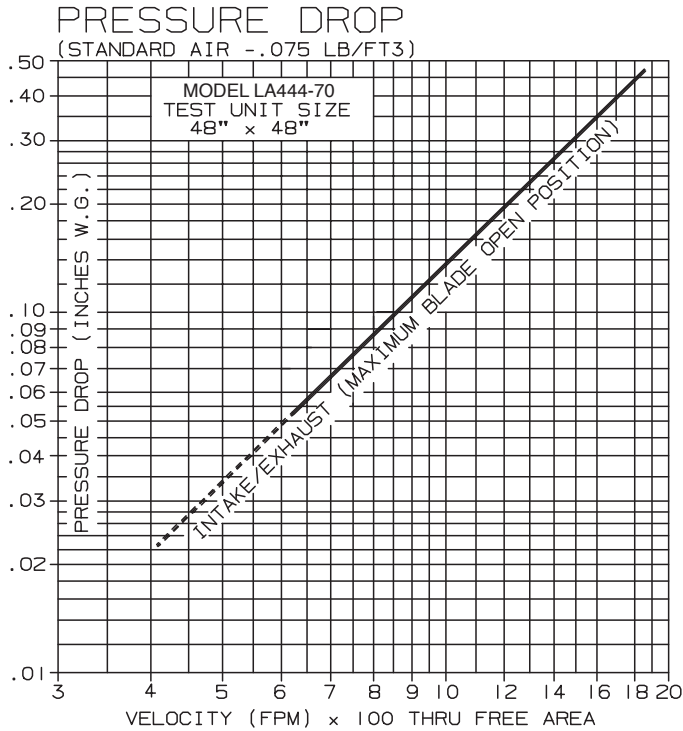
ADJUSTABLE LOUVERS

EXTRUDED ALUMINUM - 6" DEEP

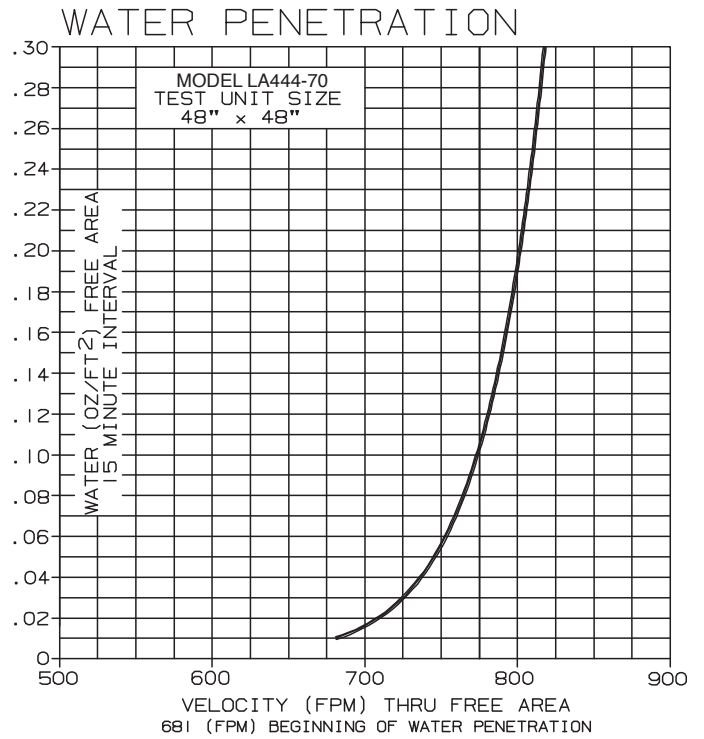
PERFORMANCE DATA

TESTS OF A 48" X 48" SAMPLE ACCORDING TO AMCA STANDARD 500-L SHOWS LESS THAN .07" W.G. PRESSURE DROP INTAKE AND EXHAUST AT 700 FPM (FREE AREA VELOCITY).

RATINGS DO NOT INCLUDE THE EFFECT OF BIRDSCREEN.



NOTE:
THE AMCA CERTIFIED RATINGS SEAL APPLIES TO AIR PERFORMANCE ONLY. THIS LOUVER IS TESTED IN ACCORDANCE WITH AMCA 500-L-99 TEST FIG. 5.5-6.5



FREE AREA

		FREE AREA (SQ. FT.)						
		WIDTH						
HEIGHT	12"	18"	24"	30"	36"	42"	48"	
	12"	.22	.39	.56	.73	.90	1.07	1.24
	24"	.79	1.38	1.97	2.56	3.15	3.74	4.33
	36"	1.35	2.36	3.37	4.38	5.39	6.40	7.41
	48"	1.91	3.34	4.77	6.21	7.64	9.07	10.71
	60"	2.47	4.32	6.18	8.03	9.89	11.74	13.59
	72"	3.03	5.31	7.58	9.86	12.13	14.41	16.68
	84"	3.59	6.29	8.99	11.68	14.38	17.07	19.77
96"	4.16	7.27	10.39	13.51	16.63	19.74	22.86	



Anemostat certifies that the performance data shown has been determined by test in accordance with applicable AMCA standards.