

### DESCRIPTION

KMC Connect Lite is a mobile app that saves time and money by providing fast in-the-office or in-the-field configuration of unopened and unpowered KMC Conquest controllers using **NFC** (Near Field Communication) technology.

With KMC Connect Lite (P/N **CONNECT-LITE-MOBILE**), you can:

- Read, modify, and write data directly from and to an unpowered KMC Conquest controller...even while still inside the box in which it was shipped
- Create templates for specific application deployment
- View previous read and write device information history
- Email the read and write history

KMC Connect Lite is designed for use with Android and Apple devices and is available for download from the [Apple App Store](#) and [Google Play](#). Although the download is free, a license must be purchased from KMC to use the app.



### APPLICATIONS

#### Configurable KMC Conquest Controllers

The following NFC-enabled KMC Conquest controllers are configurable using KMC Connect Lite:

- **BAC-5900 Series BACnet General Purpose Controllers**
- **BAC-9000 Series BACnet VAV Controller-Actuators**
- **BAC-9300 Series BACnet Unitary Controllers**

To find out more information about KMC Conquest controllers, see the [KMC Conquest Selection Guide](#) and the [KMC Conquest Controller Application Guide](#).

### Connect Lite Configuration Screens

The **Read** screen is used to:

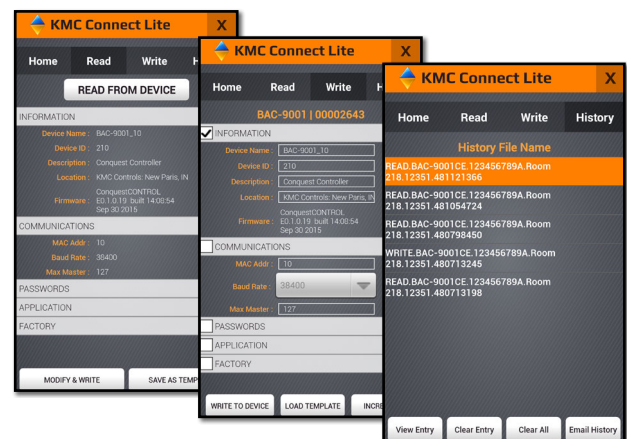
- View the current configuration settings of a controller
- Save controller-specific configuration settings as a template for future projects

The **Write** screen is used to:

- Modify a controller's configuration settings
- Save model/application-specific templates
- Increment data for fast configuration
- Write settings to one or multiple controllers

The **History** screen is used to:

- View a previous read or write event activity
- Email one or all of the history items read by the mobile device
- Clear one or all of the history items from the mobile device



# SPECIFICATIONS/REQUIREMENTS

## Android

KMC Connect Lite can run on Android devices meeting the following requirements:

- Android phone with NFC and OS 4.0 and up installed
- Android Tablet with NFC and Android KitKat 4.4 and up installed
- Android phone using an HPO-9003 NFC fob and Bluetooth with OS 4.0 and up installed
- Android Tablet using an HPO-9003 NFC fob and Bluetooth with Android KitKat 4.4 and up installed

**NOTE:** In some devices the NFC antenna is located on the battery. Verify an Original Equipment Manufacturer's battery indicating NFC is installed.

## Apple

KMC Connect Lite can run on Apple devices meeting the following requirements:

- Apple device with iOS 6.0 or later installed
- Compatible with iPhone, iPad, and iPod Touch using an HPO-9003 NFC-Bluetooth fob

## ACCESSORY (HPO-9003)



An **HPO-9003** NFC-Bluetooth fob is required when using an Android device that does not have NFC or with an Apple device. The device must be Bluetooth-enabled.

## Physical Characteristics

Dimensions	2.7 x 1.7 x 0.7 in. (6.8 x 4.2 x 1.8 cm)
Weight	1.06 oz (30 g)

## Electrical Characteristics

Battery	Internal rechargeable lithium-polymer battery 3.7 VDC, 300 mAh
Expected battery life	Approximately 10,000 reads
Charge time	Approximately 2.5 hours via standard USB port with supplied USB-A male to Micro-A male cable

## Environmental Limits

Operating	14 to 158° F (-10 to 70° C)
-----------	-----------------------------

## Scanning Characteristics

Frequency	13.56 MHz
NFC read range	Up to about 1.5 in (4 cm)

**NOTE:** To meet FCC regulations and enhance data communication reliability, NFC operation should only be used when the controller is **not** powered.

**The KMC Connect Lite™ app is patent pending.**

## SUPPORT

For information about KMC Connect Lite installation and using the app for configuration of KMC Conquest controllers, see the [KMC Connect Lite Mobile App User Guide](#).

Additional resources for installation, configuration, application, operation, programming, upgrading, and much more are available on the web at [www.kmcccontrols.com](http://www.kmcccontrols.com). To see all available files, log-in to the KMC Partners site.

