

SUBMITTAL SHEET

PRODUCT FEATURES

- 1/2" x 1/2" x 1/2" aluminum core
- Registers include a factory attached, steel opposed blade volume control damper

CONSTRUCTION DETAILS

Material: Extruded Aluminum Frame (std)

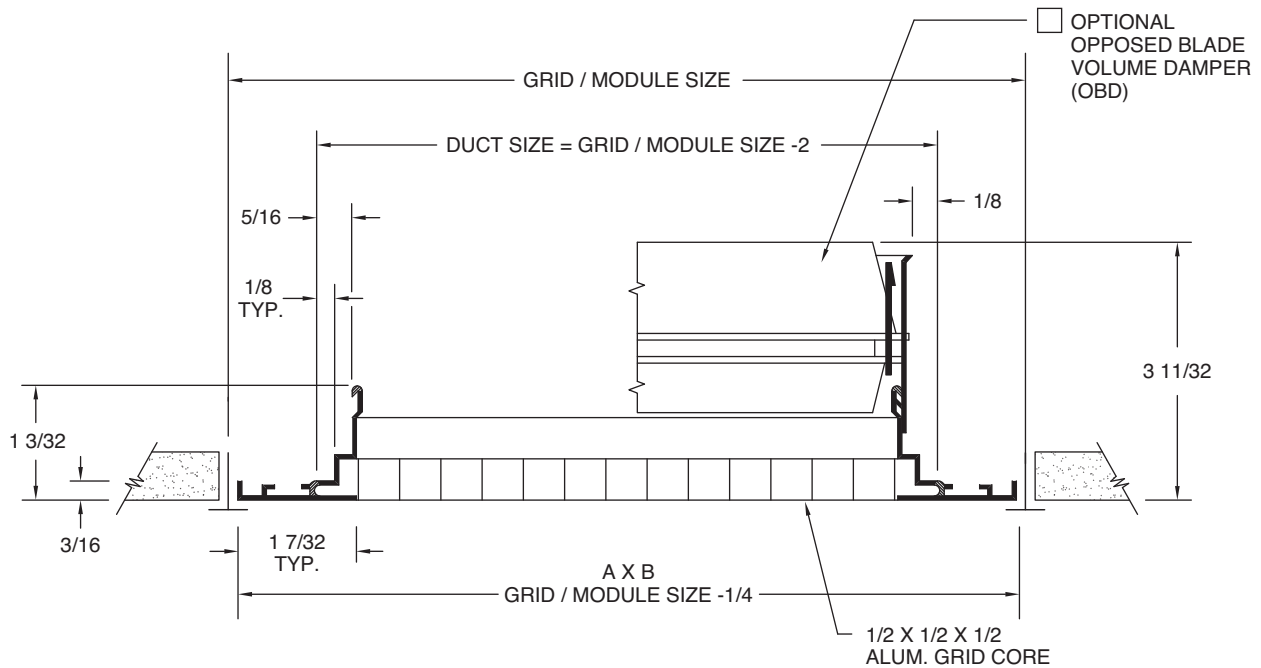
Finish:

- Arctic White (std)
- Custom Color (opt)

Accessories

- OB** Opposed Blade Damper

MUST SPECIFY WITHOUT SCREW HOLES



GRID / MODULE SIZE	A	B	DUCT SIZE
12 x 12	11 3/4	11 3/4	10 x 10
24 x 12	23 3/4	11 3/4	22 x 10
24 x 24	23 3/4	23 3/4	22 x 22
48 x 24	47 3/4	23 3/4	46 x 22
48 x 48	47 3/4	47 3/4	46 x 46

All dimensions are in inches.

JOB NAME:

SUBMITTED BY: