

SUBMITTAL SHEET

www.anemostat-hvac.com

PRODUCT FEATURES

- Linear slot diffuser for combination flush-to-wall / beveled plaster frame applications
- Internal controllers adjustable for pattern and volume control

CONSTRUCTION FEATURES

- Material:**
Extruded aluminum
- Finish:**
- Arctic White Surface Frame
Black Plaster Frame
(Black Pattern/Volume Controllers)
 - Natural Anodize
(Black Pattern/Volume Controllers)
 - Custom Color : _____

SUPPLY MODELS

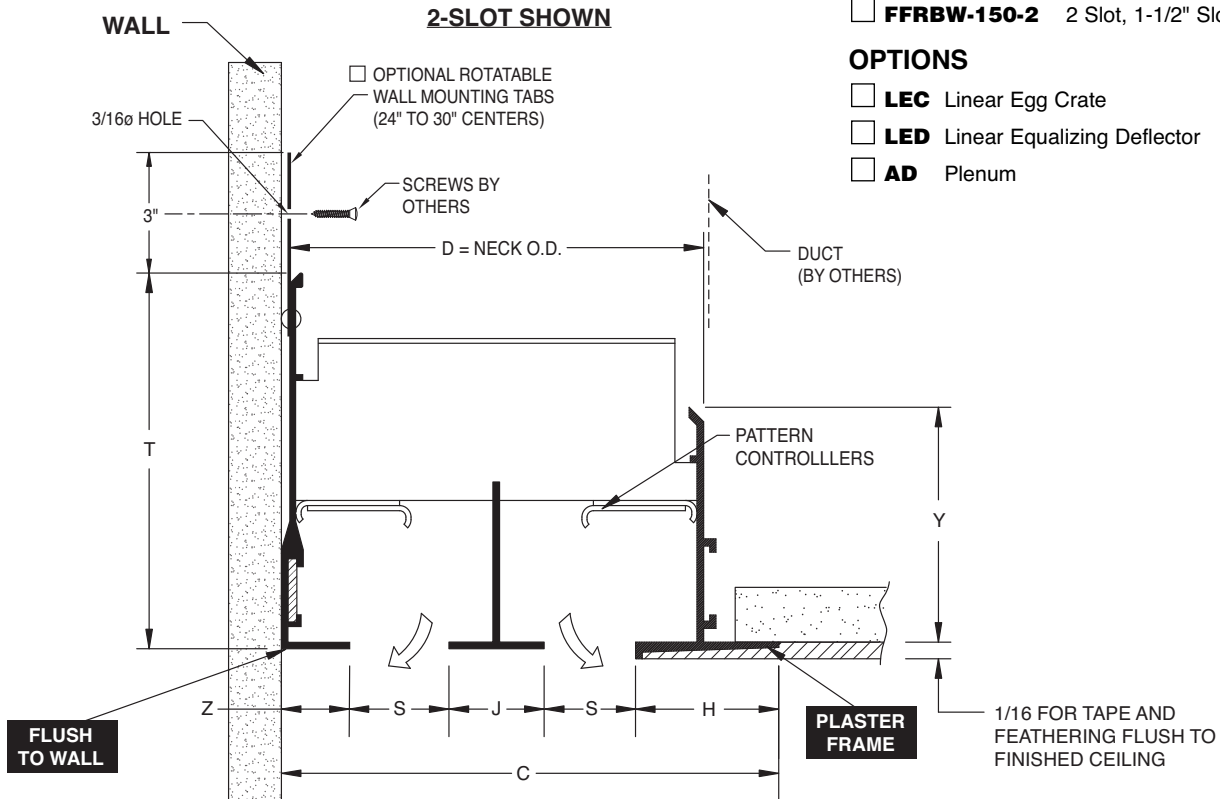
- FFBW-100-1** 1 Slot, 1" Slot Width
- FFBW-100-2** 2 Slot, 1" Slot Width
- FFBW-150-1** 1 Slot, 1-1/2" Slot Width
- FFBW-150-2** 2 Slot, 1-1/2" Slot Width

RETURN MODELS (No Internal Controllers)

- FFRBW-100-1** 1 Slot, 1" Slot Width
- FFRBW-100-2** 2 Slot, 1" Slot Width
- FFRBW-150-1** 1 Slot, 1-1/2" Slot Width
- FFRBW-150-2** 2 Slot, 1-1/2" Slot Width

OPTIONS

- LEC** Linear Egg Crate
- LED** Linear Equalizing Deflector
- AD** Plenum



MODEL FFBW-100 • 1" SLOT WIDTH								
MODEL	S	J	D	H	Z	C	Y	T
FFBW-100-1	1	-	2-1/16	1-1/4	19/32	2-27/32	2-1/16	3-9/32
FFBW-100-2	1	1	4-1/16	1-1/4	19/32	4-27/32	2-1/16	3-9/32

MODEL FFBW-150 • 1-1/2" SLOT WIDTH								
MODEL	S	J	D	H	Z	C	Y	T
FFBW-150-1	1-1/2	-	3-1/16	1-1/2	27/32	3-27/32	2-9/16	4-5/32
FFBW-150-2	1-1/2	1-1/2	6-1/16	1-1/2	27/32	6-27/32	2-9/16	4-5/32

All dimensions are in inches.

JOB NAME:
SUBMITTED BY: