

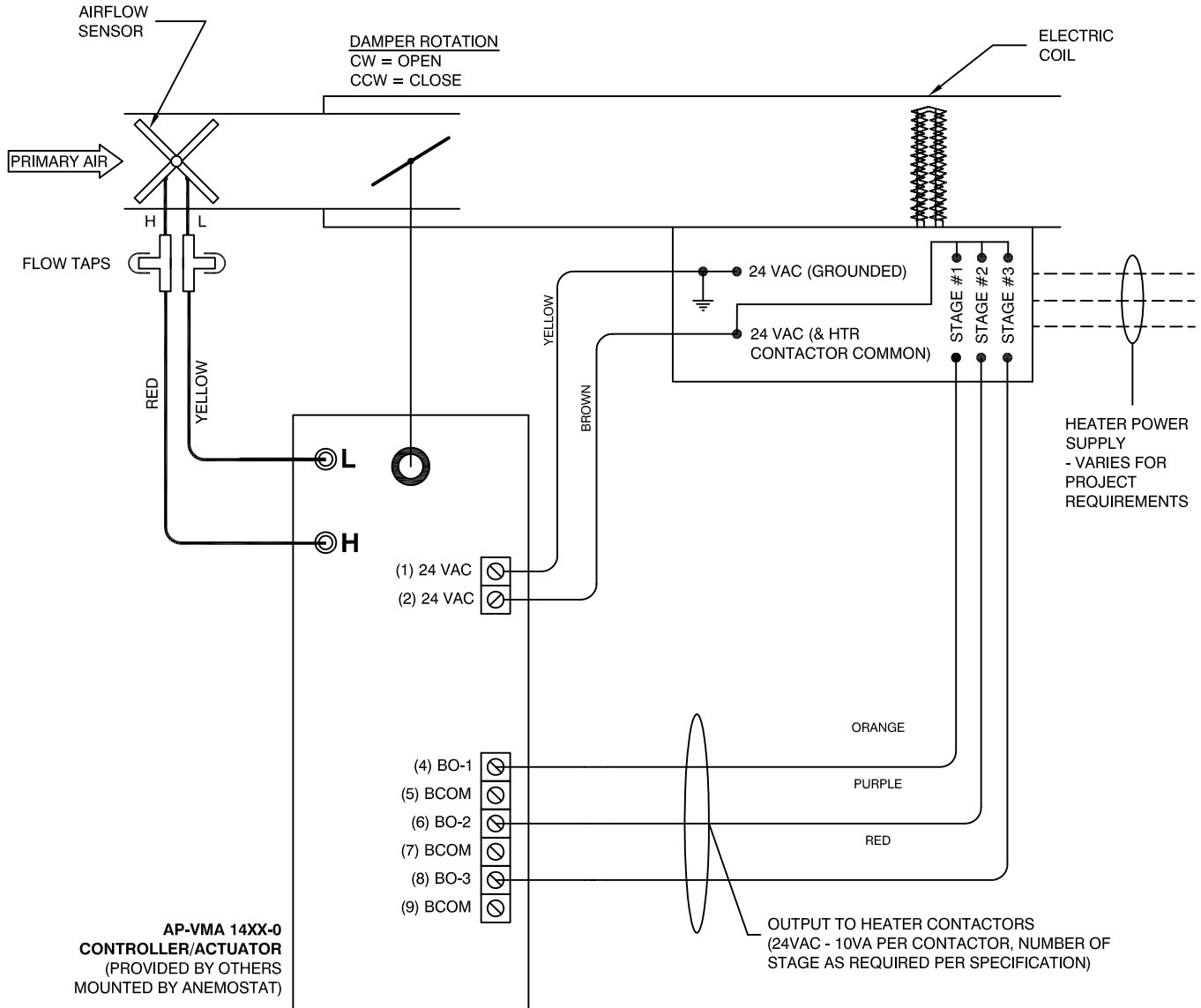
# ANEMOSTAT<sup>®</sup>

AIR TERMINAL CONTROLS

## Control Package SD-D-J035

- SINGLE DUCT
- DIRECT DIGITAL CONTROLS BY JOHNSON CONTROLS
- DDC SUPPLIED TO FACTORY FOR INSTALLATION

- ELECTRIC HEAT - STEP CONTROL



### IMPORTANT!

1. THE 24 VAC SOURCE IS LOCATED IN HEATER ENCLOSURE AND IS SIZED TO HANDLE HEATER CONTACTOR LOAD + 15VA OVERHEAD FOR CONTROLLER AND ACTUATOR.

2. CONSULT CONTROLS DOCUMENTATION FOR DETAILS AS INSTALLED HARDWARE WILL VARY FROM THAT SHOWN.

**JOB NAME:**  
**SUBMITTED BY:**  
**DATE:**

**DWG #:** SD-D-J035  
**REV:** -  
**DATE:** 3-24-2017