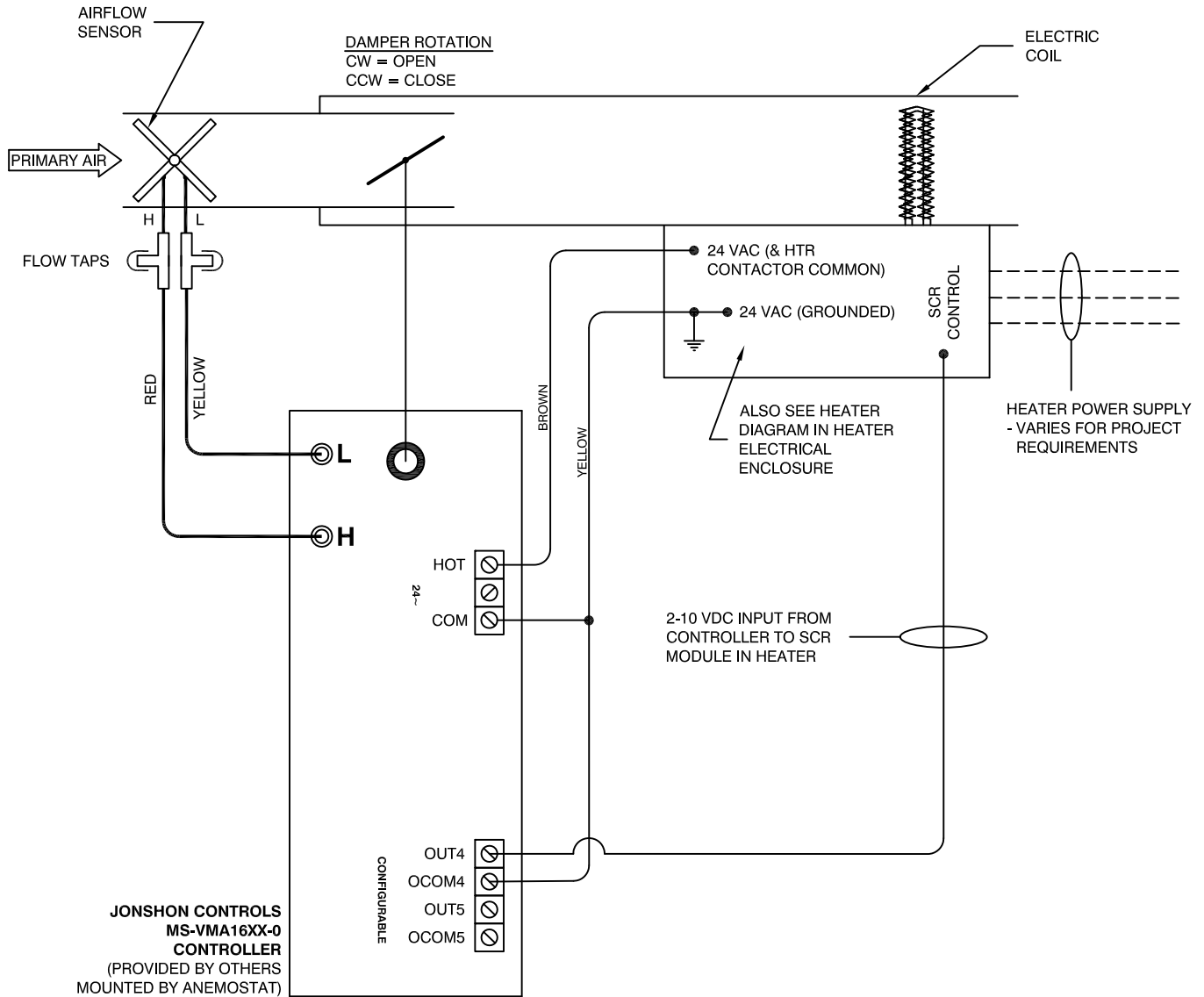


ANEMOSTAT[®]

AIR TERMINAL CONTROLS

Control Package SD-D-J027

- SINGLE DUCT
- ELECTRIC HEAT - SCR CONTROL
- DIRECT DIGITAL CONTROLS BY JOHNSON CONTROLS
- DDC SUPPLIED TO FACTORY FOR INSTALLATION



IMPORTANT!

1. THE 24 VAC SOURCE IS LOCATED IN HEATER ENCLOSURE AND IS SIZED TO HANDLE HEATER CONTACTOR LOAD + 15VA OVERHEAD FOR CONTROLLER AND ACTUATOR.
2. CONSULT CONTROLS DOCUMENTATION FOR DETAILS AS INSTALLED HARDWARE WILL VARY FROM THAT SHOWN.

————— **FACTORY WIRING**
 - - - - - **FIELD WIRING**
 ———— **FACTORY PIPING**

CONSULT CONTROLS DOCUMENTATION FOR DETAILS AS INSTALLED HARDWARE WILL VARY FROM THAT SHOWN HERE.

JOB NAME:
SUBMITTED BY:
DATE:

DWG #: SD-D-J027
REV: A
DATE: 3-23-2017