

# ANEMOSTAT<sup>®</sup>

## AIR TERMINAL CONTROLS

# Control Package

## SD - D - 7006A

- SINGLE DUCT COOLING WITH PROP ELEC HEAT (SCR)
- BACNET DIGITAL CONTROLS
- DISCHARGE TEMP LIMITING
- PRESSURE INDEPENDENT
- NETSENSOR ABC-1161/1161W

DISCHARGE SUPPLY AIR TEMP SENSOR  
STE-1401 (FIELD INSTALLED)

ALSO SEE HEATER  
DIAGRAM IN HEATER  
ELECTRICAL  
ENCLOSURE

ELECTRIC  
COIL

DAMPER ROTATION  
CW = OPEN  
CCW = CLOSE

AIRFLOW  
SENSOR

PRIMARY AIR

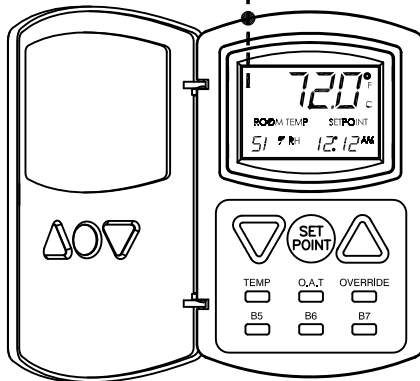
SEE MANUAL CM-1 FOR  
SPECIFIC TUBING SIZE  
AND LENGTH

RJ-12 BOTH ENDS  
6 CONDUCTOR PLENUM  
RATED CABLE  
75 FEET MAX

CABLE ASSEMBLY (OPT)

- ABC-5690 (25')
- ABC-5691 (50')
- ABC-5692 (75')

REFER TO INSTALLATION  
MANUAL FOR PROPER  
NETWORK WIRING AND  
GROUNDING



NETSENSOR  
ABC-1161/1161W (TEMP)

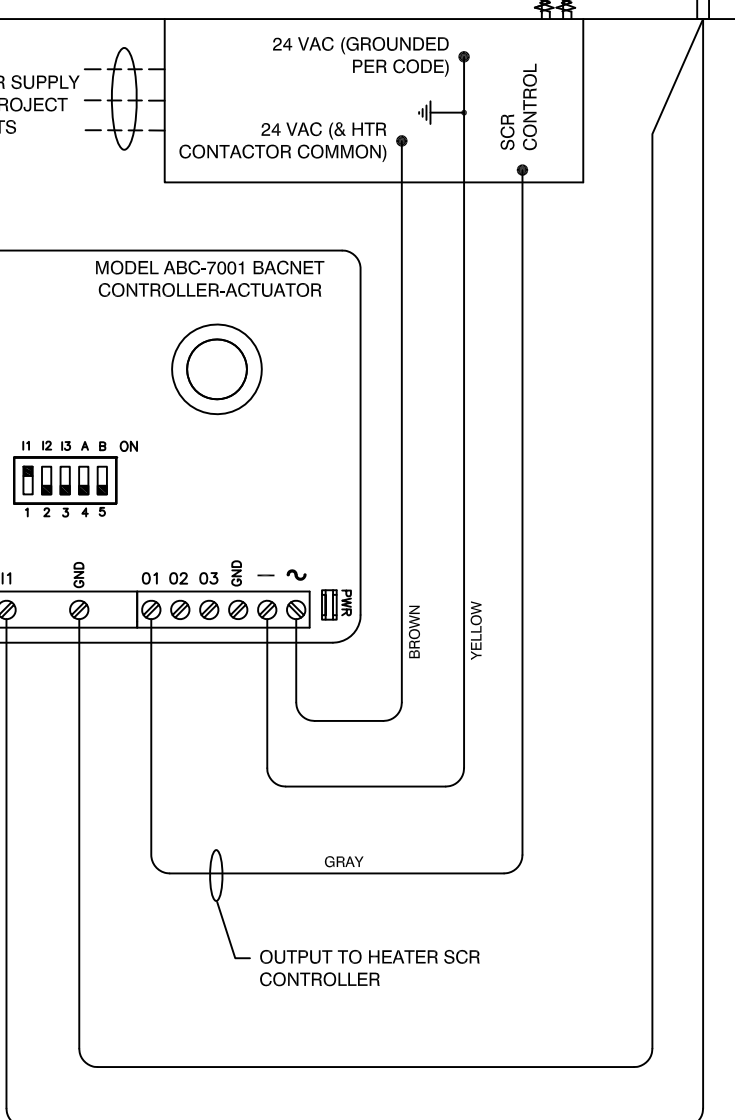
HEATER POWER SUPPLY  
- VARIES FOR PROJECT  
REQUIREMENTS

MODEL ABC-7001 BACNET  
CONTROLLER-ACTUATOR

24 VAC (GROUNDED  
PER CODE)

24 VAC (& HTR  
CONTACTOR COMMON)

SCR  
CONTROL



GRAY

OUTPUT TO HEATER SCR  
CONTROLLER

————— FACTORY WIRING  
- - - - - FIELD WIRING  
————— FACTORY PIPING

REFER TO ANEMOSTAT "CONTROLS MANUAL" (CM-1) FOR  
ADJUSTMENT & TROUBLESHOOTING PROCEDURES.

JOB NAME:  
SUBMITTED BY:  
DATE:

DWG #: SD-D-7006A.1  
REV: A  
DATE: 3-1-13