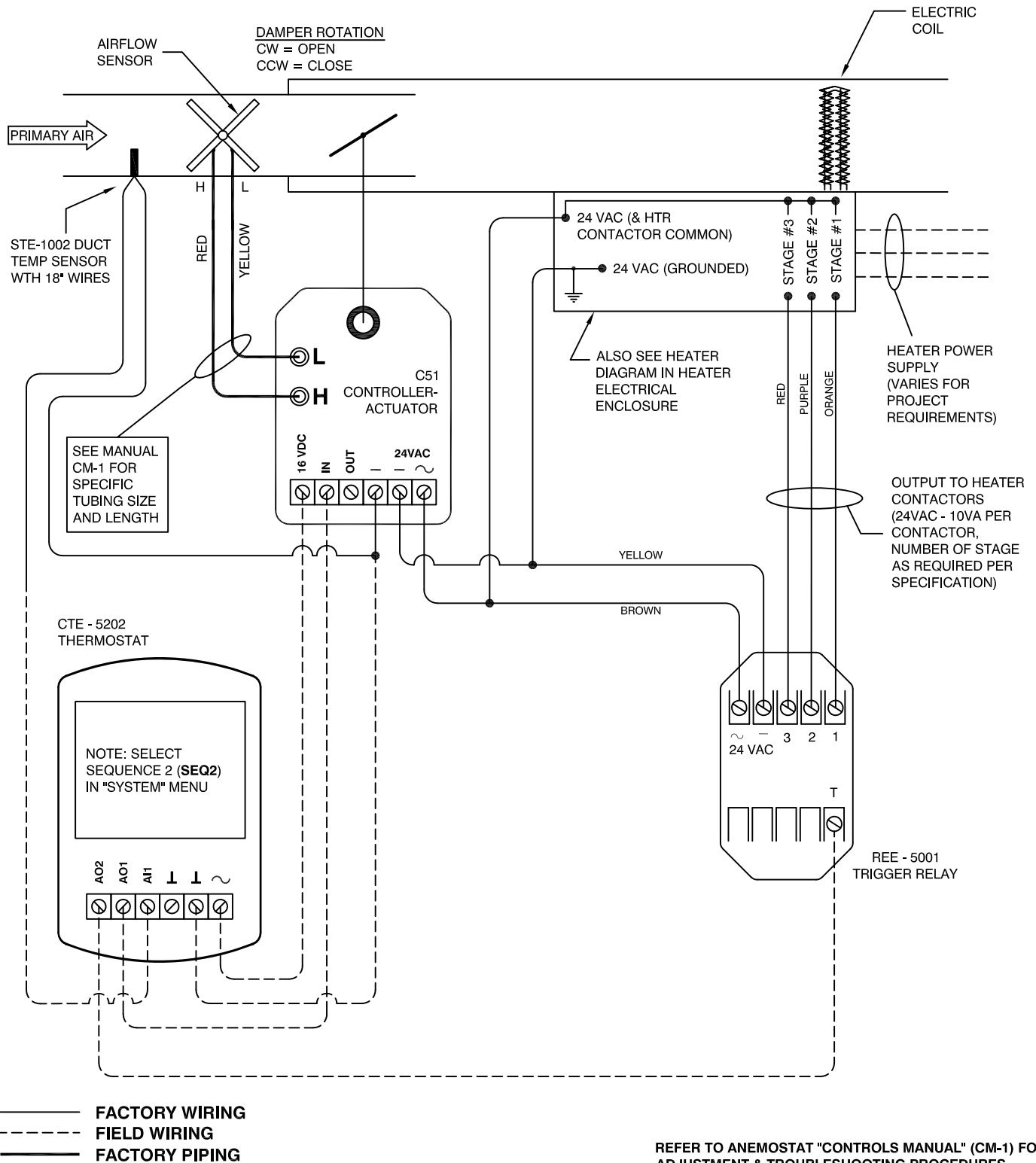


# ANEMOSTAT<sup>®</sup>

AIR TERMINAL CONTROLS

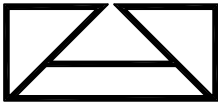
## Control Package SD - A - 5241

- SINGLE DUCT
- ANALOG ELECTRONIC CONTROLS
- VAV COOLING
- ELECTRIC HEAT - STEP CONTROL
- PRESSURE INDEPENDENT
- AIR FLOW SETPOINTS ADJUSTED AT THERMOSTAT

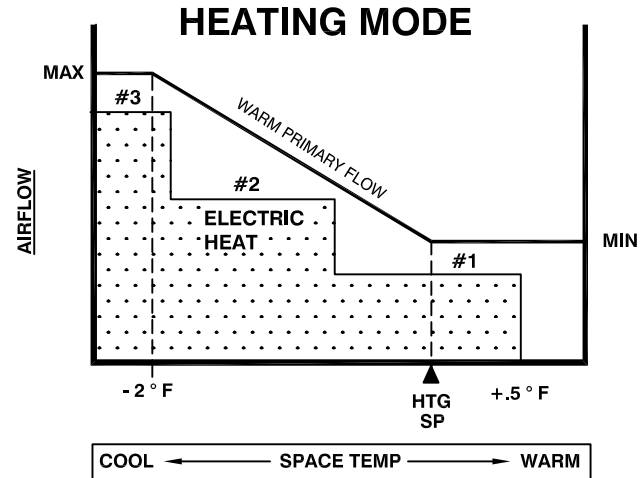
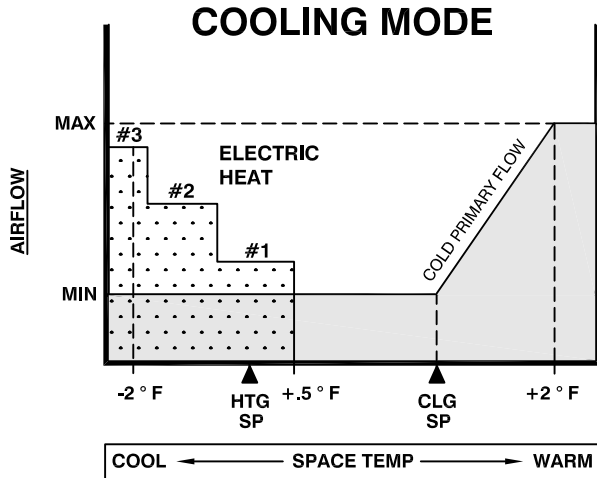


**JOB NAME:**  
**SUBMITTED BY:**  
**DATE:**

**DWG #:** SD-A-5241.1  
**REV:** A  
**DATE:** 3-2-2017



- SINGLE DUCT
- ANALOG ELECTRONIC CONTROLS
- VAV HEATING & COOLING
- AUTO HTG-CLG CHANGEOVER
- ELECTRIC HEAT - STEP CONTROL
- PRESSURE INDEPENDENT
- AIR FLOW SETPOINTS ADJUSTED AT THERMOSTAT



## SEQUENCE OF OPERATION

1. THE THERMOSTAT SIGNALS THE CONTROLLER IN RESPONSE TO THE SPACE TEMPERATURE. THE CONTROLS SENSE SUPPLY AIR TEMP AND AUTOMATICALLY INDEX TO D.A. COOLING OR R.A. HEATING.
2. WHEN SUPPLY AIR TEMP IS LESS THAN 73° F, THE THERMOSTAT D.A. COOLING OUTPUT CONTROLS FLOW (COOLING MODE). WITH SPACE TEMPERATURE BELOW THE THERMOSTAT COOLING SETPOINT, THE DAMPER MAINTAINS MINIMUM COLD AIRFLOW.
3. AS THE SPACE TEMP DROPS BELOW THE HTG SETPOINT, UP TO 3 STEPS OF ELECTRIC HEAT ARE ENERGIZED.
4. AS THE SPACE TEMPERATURE INCREASES FROM CLG SETPOINT TO +2° F ABOVE SETPOINT, THE DAMPER OPENS FROM MIN TO MAX CLG AIRFLOW.
5. ABOVE (CLG SETPOINT + 2° F), THE DAMPER MAINTAINS MAXIMUM COLD FLOW.
6. WHEN SUPPLY AIR TEMP IS GREATER THAN 81° F, THE THERMOSTAT R.A. HEATING OUTPUT CONTROLS FLOW (HEATING MODE). AS THE SPACE TEMPERATURE DECREASES FROM HEATING SETPOINT TO - 2° F BELOW HTG SETPOINT, THE DAMPER OPENS FROM MIN TO MAX HEATING AIRFLOW. UP TO 3 STEPS OF ELECTRIC HEAT ARE ENERGIZED.
7. BELOW (SETPOINT - 2° F), THE DAMPER MAINTAINS MAXIMUM WARM FLOW.
8. THE MINIMUM AND MAXIMUM AIRFLOW SETPOINTS FOR HEATING AND COOLING ARE ADJUSTED AT THE THERMOSTAT, AND ARE INDEPENDENT OF EACH OTHER.
9. UPON LOSS OF POWER, DAMPER FAILS IN PLACE.

DO NOT SET MINIMUM AIRFLOW SETPOINTS FOR ZERO FLOW, AS THIS MAY RESULT IN IMPROPER INDEXING.

**JOB NAME:**  
**SUBMITTED BY:**  
**DATE:**

**DWG #:** SD-A-5241.2  
**REV:** -  
**DATE:** 2-12-07