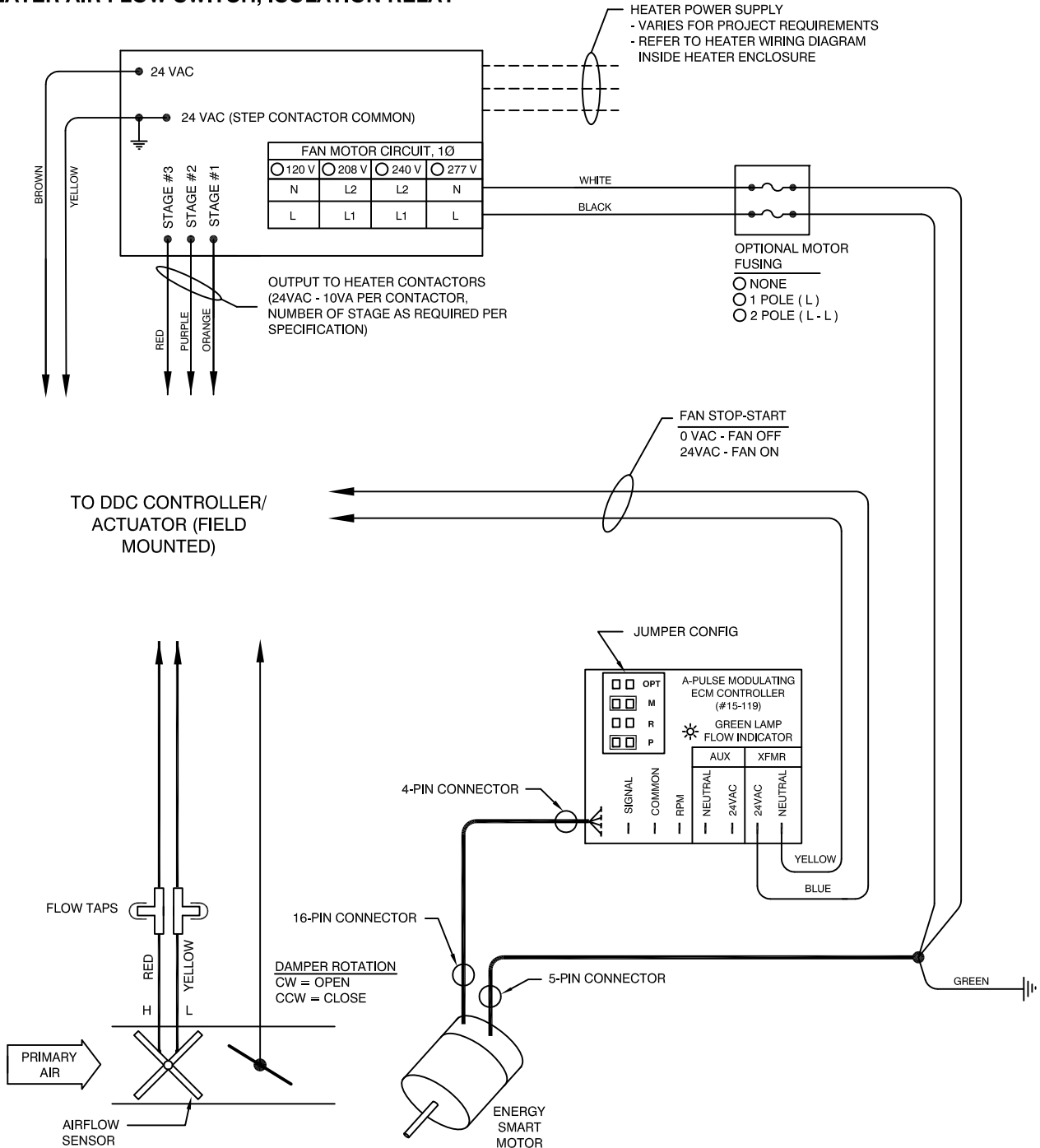


ANEMOSTAT®

PARALLEL FAN AIR TERMINAL

Control Package
EP - D - 0006

- DDC - FIELD INSTALLED
- EC FAN MOTOR
- ELECTRIC HEAT - STEP CONTROL
- HEATER AIR FLOW SWITCH, ISOLATION RELAY



1. PROPER CONNECTION OF FIELD INSTALLED CONTROLS IS THE SOLE RESPONSIBILITY OF THE INSTALLER

JOB NAME:
SUBMITTED BY:
DATE:

DWG #: EP-D-0006
REV: A
DATE: 1-23-17